

Daily Summary Statistics for the GLM Gridded Products

1 Overall fraction with lightning is the number grid cells in this FOV that detected lightning divided by the total grid cells in this FOV (~3.7 million)

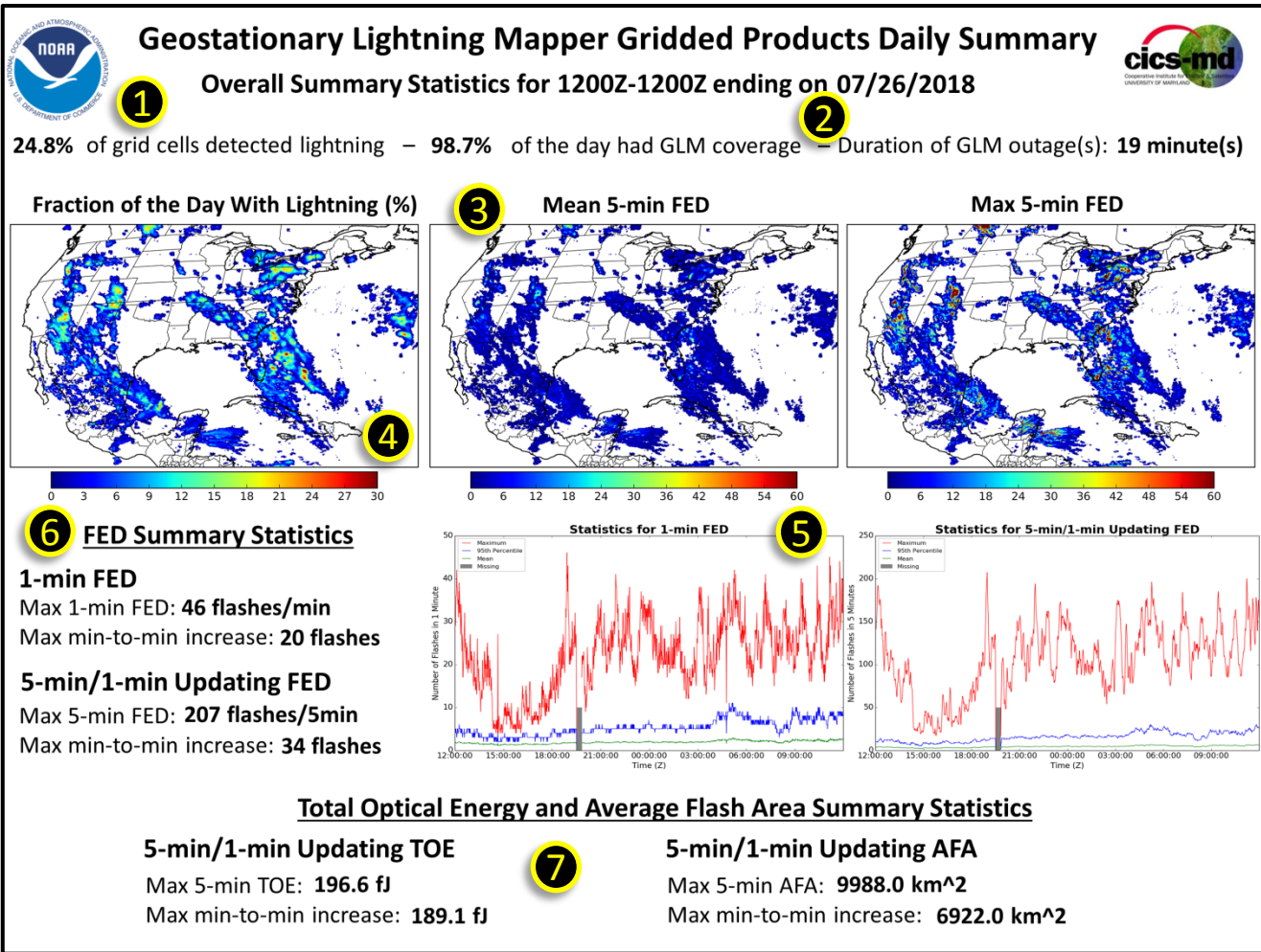
2 Missing/outage only describes the LDM feeds at UMD, this may vary by NWS region until the SBN feed is established

3 Maps illustrate stats at each 2x2 km grid cell over the entire day (1440 min)

4 Fraction of the day with lightning indicates the number of minutes at each grid cell with lightning divided by 1440 min

5 Time series plots depict 1-min values that characterize all grid cells that observed lightning during that minute

- For both plots, the max value is red, 95th percentile is blue, and mean is green
- Missing minutes are indicated by grey bars



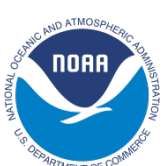
6 FED Summary Statistics

- Max FED reveals the greatest value at any 2x2 km grid cell during any of the 1440 mins
- Max min-to-min increase represents the greatest change within a common grid cell from one minute to the next

7 TOE/AFA Summary Statistics

- More descriptive stats likely will be needed for these gridded products

Composed by Dr. Scott Rudlosky (NOAA/NESDIS/STAR) on 8/4/2018



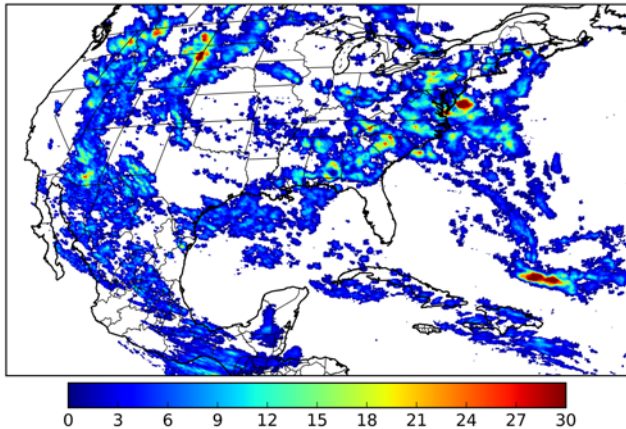
Geostationary Lightning Mapper Gridded Products Daily Summary



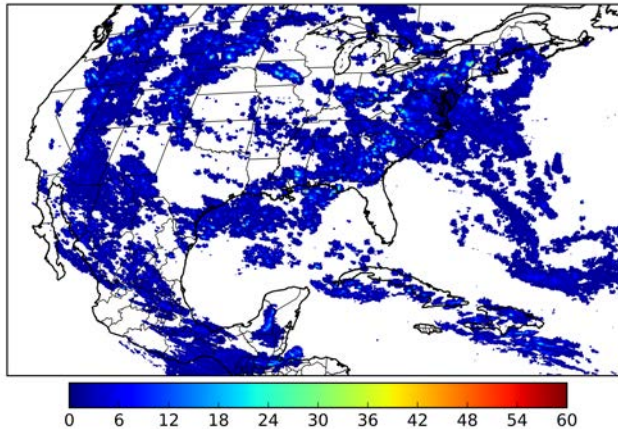
Overall Summary Statistics for 1200Z-1200Z ending on 07/11/2018

34.0% of grid cells detected lightning – **99.9%** of the day had GLM coverage – Duration of GLM outage(s): **2 minute(s)**

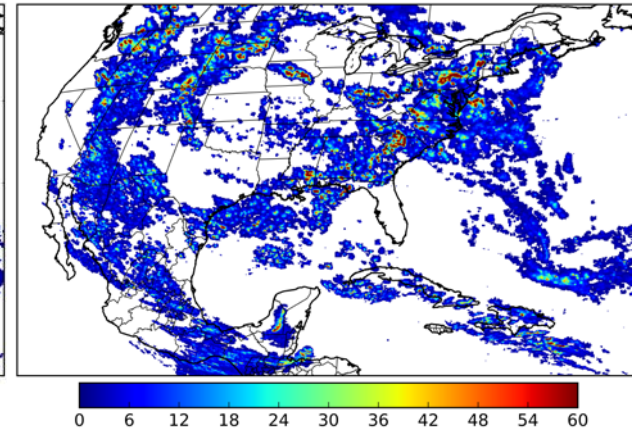
Fraction of the Day With Lightning (%)



Mean 5-min FED



Max 5-min FED



FED Summary Statistics

1-min FED

Max 1-min FED: **55 flashes/min**

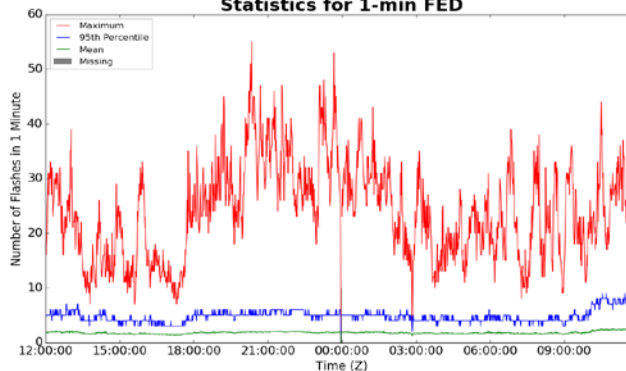
Max min-to-min increase: **17 flashes**

5-min/1-min Updating FED

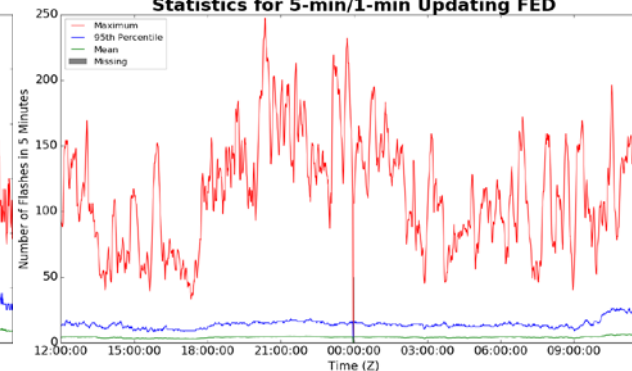
Max 5-min FED: **247 flashes/5min**

Max min-to-min increase: **39 flashes**

Statistics for 1-min FED



Statistics for 5-min/1-min Updating FED



Total Optical Energy and Average Flash Area Summary Statistics

5-min/1-min Updating TOE

Max 5-min TOE: **196.6 fJ**

Max min-to-min increase: **195.5 fJ**

5-min/1-min Updating AFA

Max 5-min AFA: **9038.0 km²**

Max min-to-min increase: **8064.0 km²**



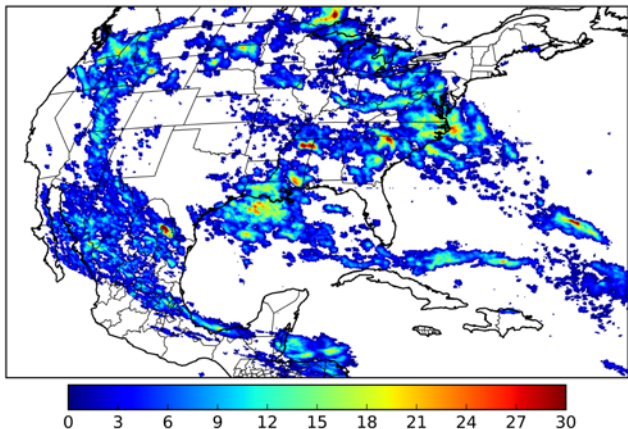
Geostationary Lightning Mapper Gridded Products Daily Summary



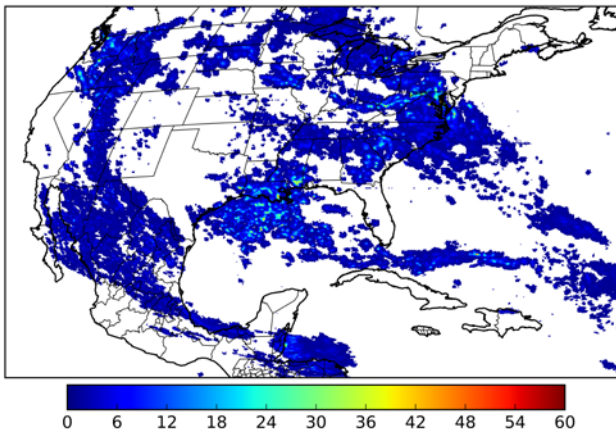
Overall Summary Statistics for 1200Z-1200Z ending on 07/12/2018

28.9% of grid cells detected lightning – **99.9%** of the day had GLM coverage – Duration of GLM outage(s): **2 minute(s)**

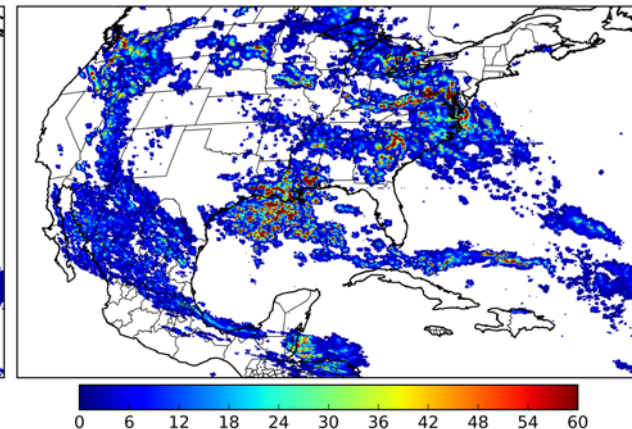
Fraction of the Day With Lightning (%)



Mean 5-min FED



Max 5-min FED



FED Summary Statistics

1-min FED

Max 1-min FED: **54 flashes/min**

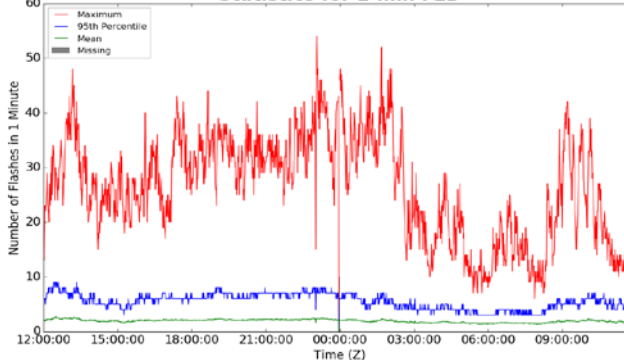
Max min-to-min increase: **27 flashes**

5-min/1-min Updating FED

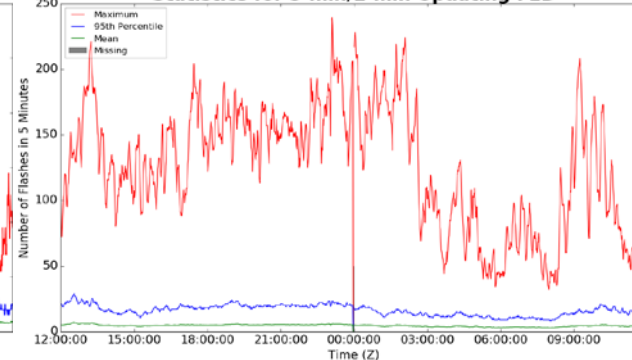
Max 5-min FED: **239 flashes/5min**

Max min-to-min increase: **45 flashes**

Statistics for 1-min FED



Statistics for 5-min/1-min Updating FED



Total Optical Energy and Average Flash Area Summary Statistics

5-min/1-min Updating TOE

Max 5-min TOE: **196.1 fJ**

Max min-to-min increase: **191.5 fJ**

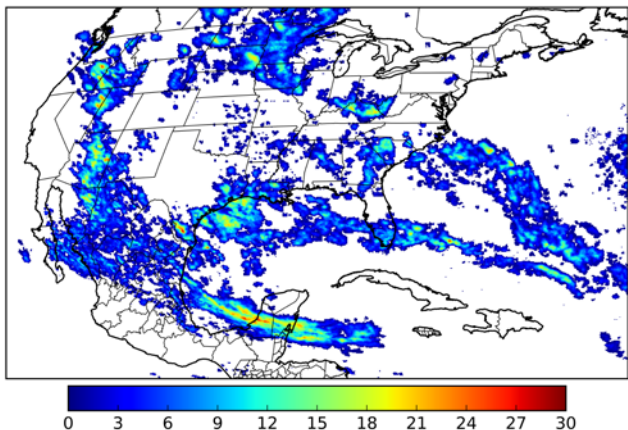
5-min/1-min Updating AFA

Max 5-min AFA: **7626.0 km²**

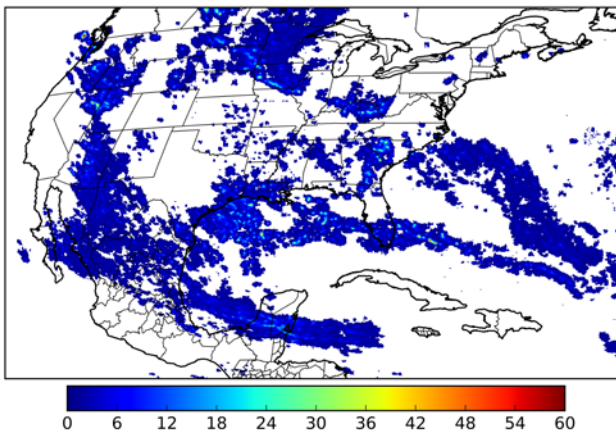
Max min-to-min increase: **6054.0 km²**

27.0% of grid cells detected lightning – **99.9%** of the day had GLM coverage – Duration of GLM outage(s): **1 minute(s)**

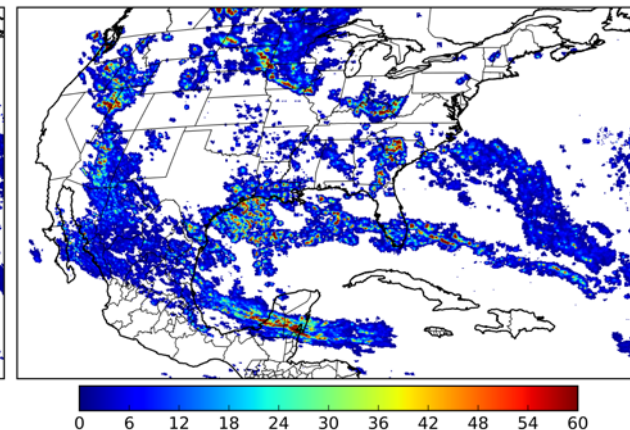
Fraction of the Day With Lightning (%)



Mean 5-min FED



Max 5-min FED



FED Summary Statistics

1-min FED

Max 1-min FED: **46 flashes/min**

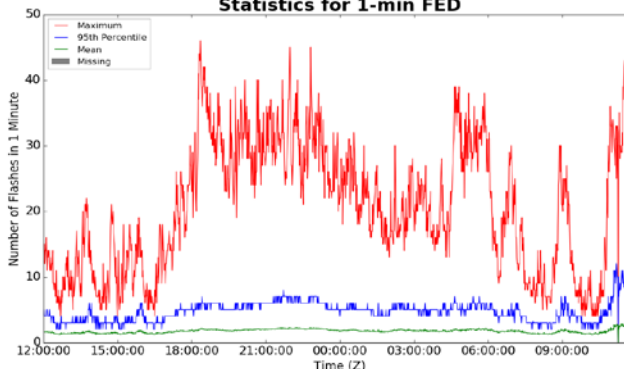
Max min-to-min increase: **19 flashes**

5-min/1-min Updating FED

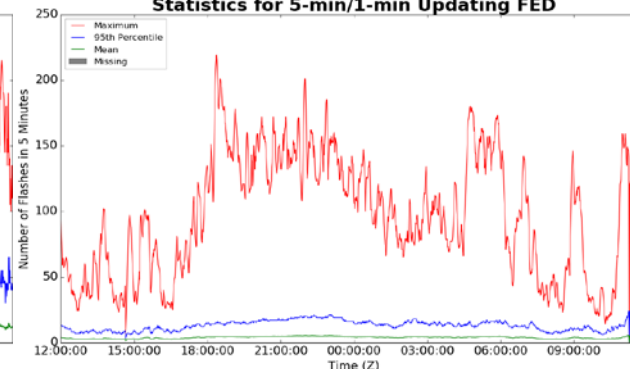
Max 5-min FED: **219 flashes/5min**

Max min-to-min increase: **38 flashes**

Statistics for 1-min FED



Statistics for 5-min/1-min Updating FED



Total Optical Energy and Average Flash Area Summary Statistics

5-min/1-min Updating TOE

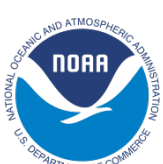
Max 5-min TOE: **194.2 fJ**

Max min-to-min increase: **181.1 fJ**

5-min/1-min Updating AFA

Max 5-min AFA: **8542.0 km²**

Max min-to-min increase: **6406.0 km²**



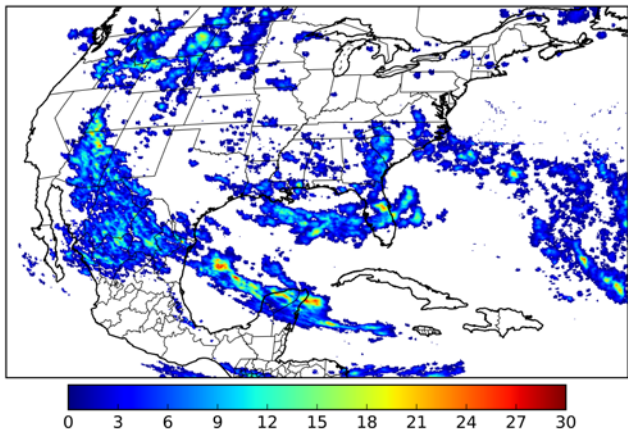
Geostationary Lightning Mapper Gridded Products Daily Summary



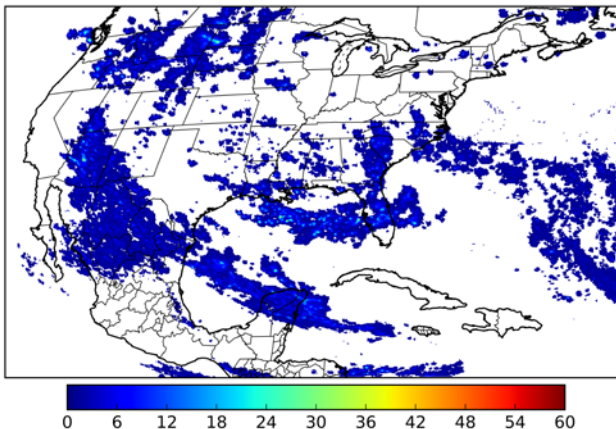
Overall Summary Statistics for 1200Z-1200Z ending on 07/14/2018

23.1% of grid cells detected lightning – **92.8%** of the day had GLM coverage – Duration of GLM outage(s): **103 minute(s)**

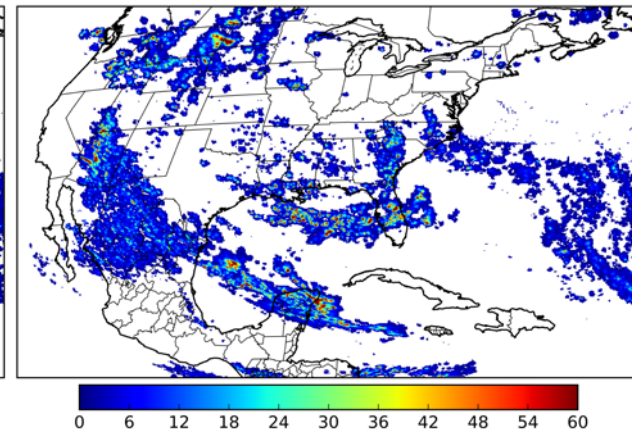
Fraction of the Day With Lightning (%)



Mean 5-min FED



Max 5-min FED



FED Summary Statistics

1-min FED

Max 1-min FED: **40 flashes/min**

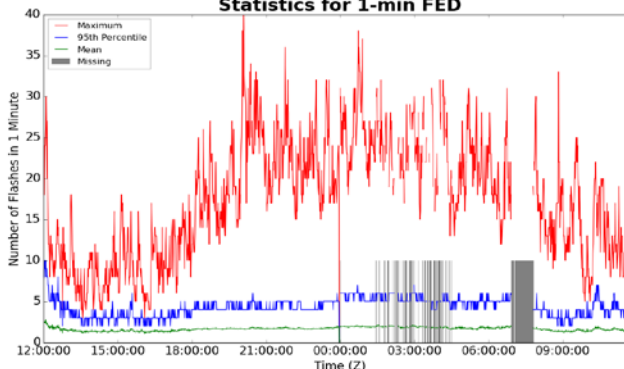
Max min-to-min increase: **23 flashes**

5-min/1-min Updating FED

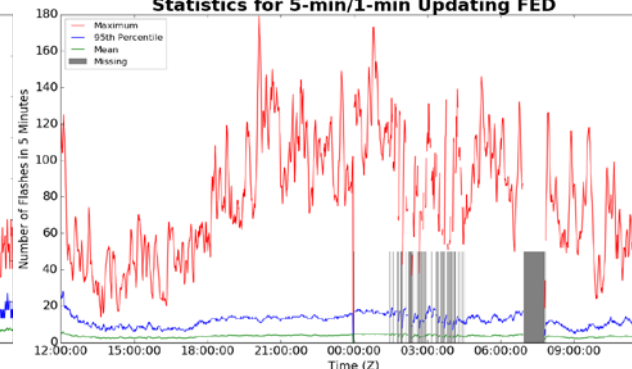
Max 5-min FED: **179 flashes/5min**

Max min-to-min increase: **32 flashes**

Statistics for 1-min FED



Statistics for 5-min/1-min Updating FED



Total Optical Energy and Average Flash Area Summary Statistics

5-min/1-min Updating TOE

Max 5-min TOE: **196.5 fJ**

Max min-to-min increase: **194.9 fJ**

5-min/1-min Updating AFA

Max 5-min AFA: **8146.0 km²**

Max min-to-min increase: **6638.0 km²**



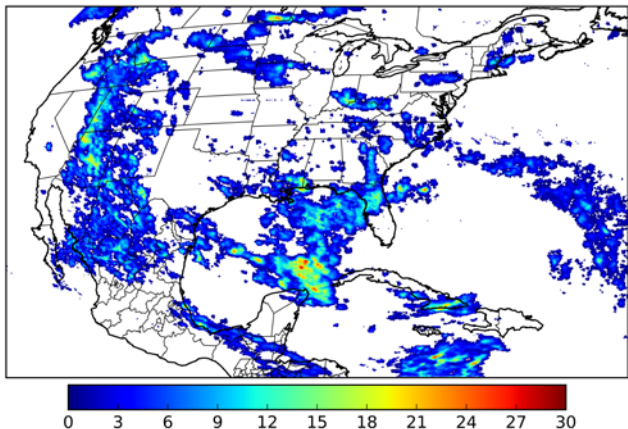
Geostationary Lightning Mapper Gridded Products Daily Summary



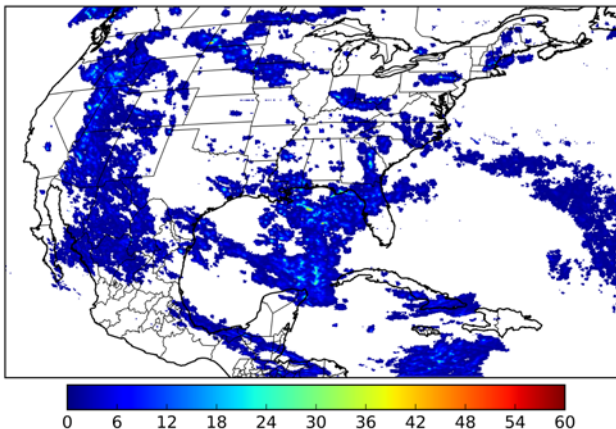
Overall Summary Statistics for 1200Z-1200Z ending on 07/15/2018

25.7% of grid cells detected lightning – **97.1%** of the day had GLM coverage – Duration of GLM outage(s): **42 minute(s)**

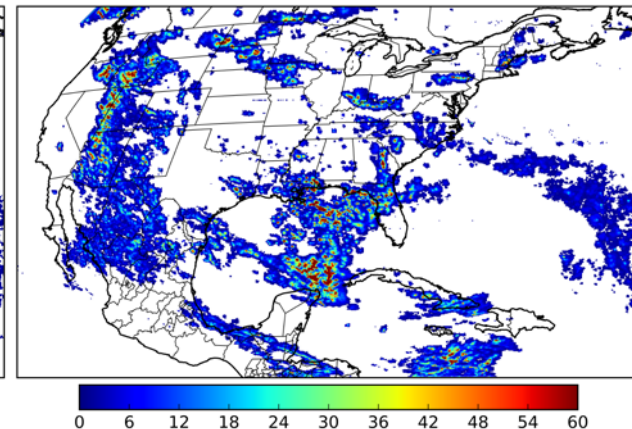
Fraction of the Day With Lightning (%)



Mean 5-min FED



Max 5-min FED



FED Summary Statistics

1-min FED

Max 1-min FED: **49 flashes/min**

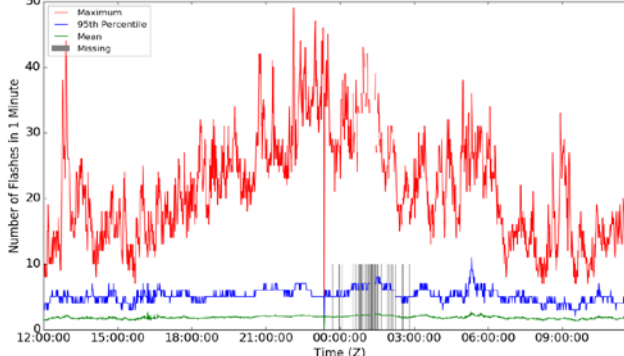
Max min-to-min increase: **22 flashes**

5-min/1-min Updating FED

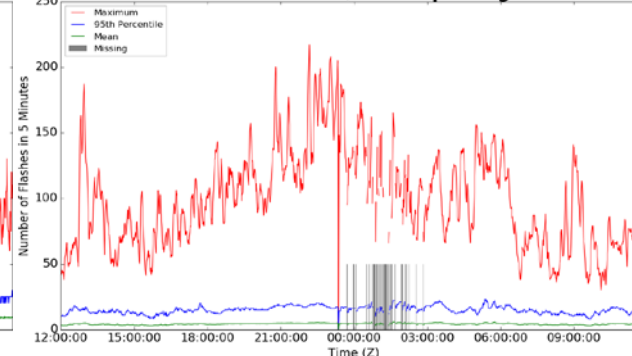
Max 5-min FED: **217 flashes/5min**

Max min-to-min increase: **41 flashes**

Statistics for 1-min FED



Statistics for 5-min/1-min Updating FED



Total Optical Energy and Average Flash Area Summary Statistics

5-min/1-min Updating TOE

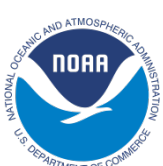
Max 5-min TOE: **196.5 fJ**

Max min-to-min increase: **181.7 fJ**

5-min/1-min Updating AFA

Max 5-min AFA: **9690.0 km²**

Max min-to-min increase: **6982.0 km²**



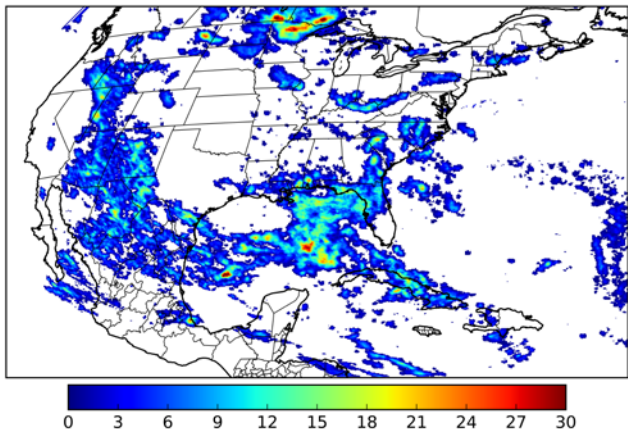
Geostationary Lightning Mapper Gridded Products Daily Summary



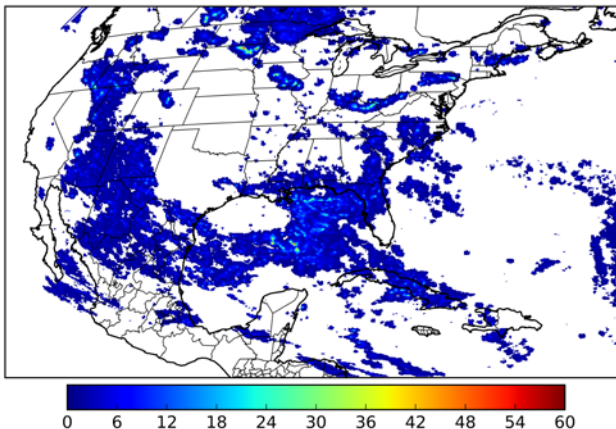
Overall Summary Statistics for 1200Z-1200Z ending on 07/16/2018

25.1% of grid cells detected lightning – **94.1%** of the day had GLM coverage – Duration of GLM outage(s): **85 minute(s)**

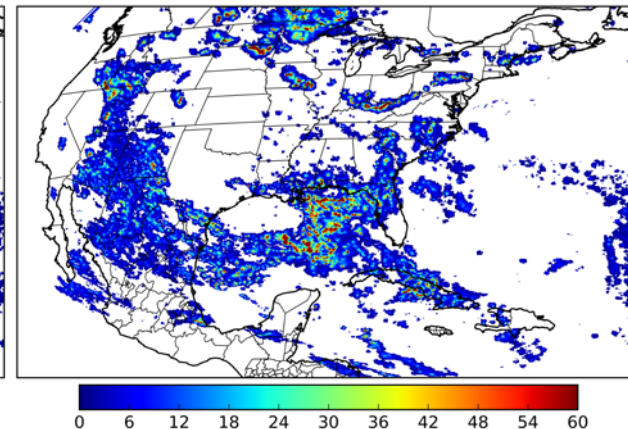
Fraction of the Day With Lightning (%)



Mean 5-min FED



Max 5-min FED



FED Summary Statistics

1-min FED

Max 1-min FED: **45 flashes/min**

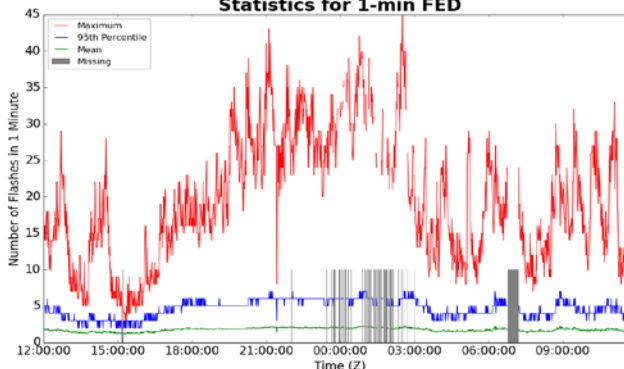
Max min-to-min increase: **23 flashes**

5-min/1-min Updating FED

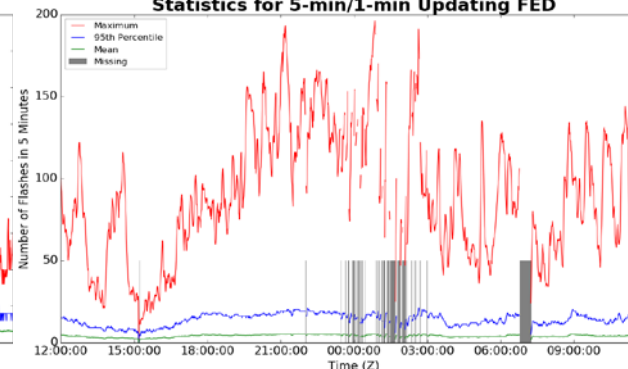
Max 5-min FED: **196 flashes/5min**

Max min-to-min increase: **62 flashes**

Statistics for 1-min FED



Statistics for 5-min/1-min Updating FED



Total Optical Energy and Average Flash Area Summary Statistics

5-min/1-min Updating TOE

Max 5-min TOE: **151.9 fJ**

Max min-to-min increase: **80.4 fJ**

5-min/1-min Updating AFA

Max 5-min AFA: **9314.0 km²**

Max min-to-min increase: **7602.0 km²**



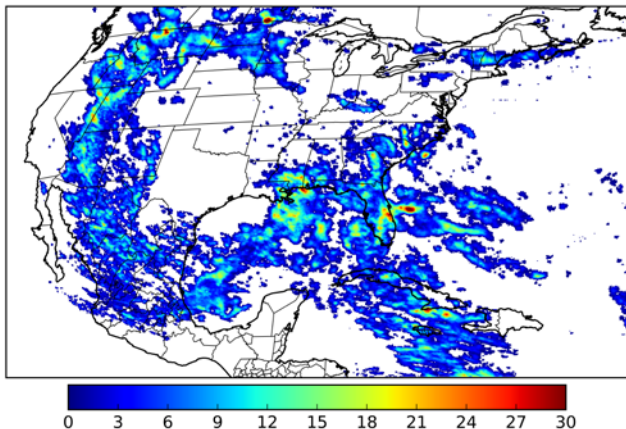
Geostationary Lightning Mapper Gridded Products Daily Summary



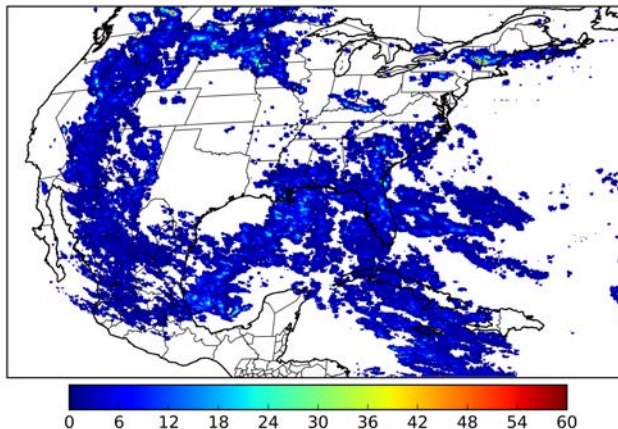
Overall Summary Statistics for 1200Z-1200Z ending on 07/17/2018

31.1% of grid cells detected lightning – **99.8%** of the day had GLM coverage – Duration of GLM outage(s): **3 minute(s)**

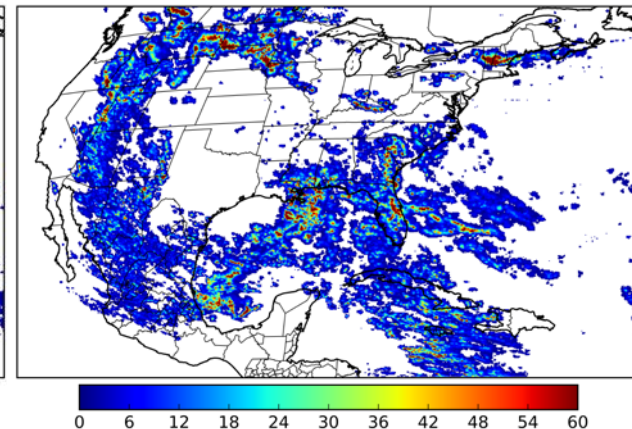
Fraction of the Day With Lightning (%)



Mean 5-min FED



Max 5-min FED



FED Summary Statistics

1-min FED

Max 1-min FED: **48 flashes/min**

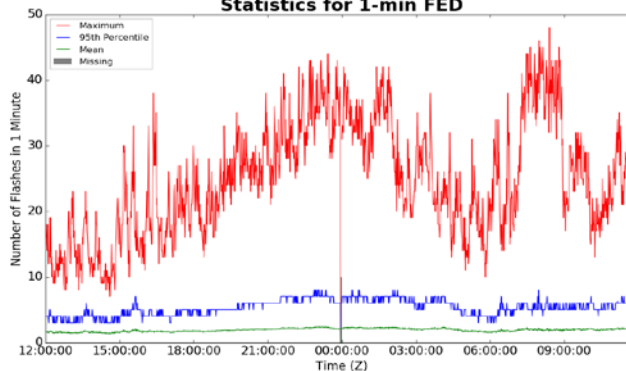
Max min-to-min increase: **23 flashes**

5-min/1-min Updating FED

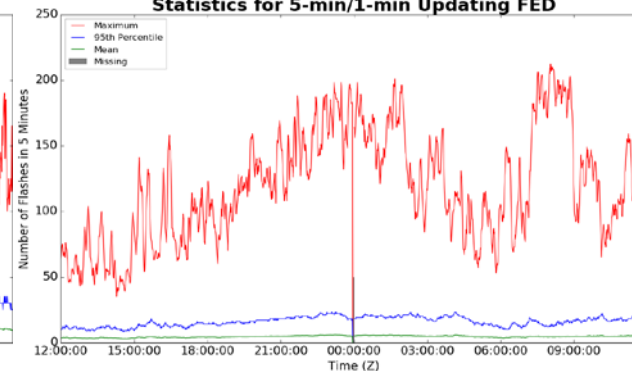
Max 5-min FED: **212 flashes/5min**

Max min-to-min increase: **83 flashes**

Statistics for 1-min FED



Statistics for 5-min/1-min Updating FED



Total Optical Energy and Average Flash Area Summary Statistics

5-min/1-min Updating TOE

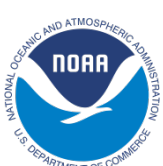
Max 5-min TOE: **195.3 fJ**

Max min-to-min increase: **188.9 fJ**

5-min/1-min Updating AFA

Max 5-min AFA: **8862.0 km²**

Max min-to-min increase: **6514.0 km²**



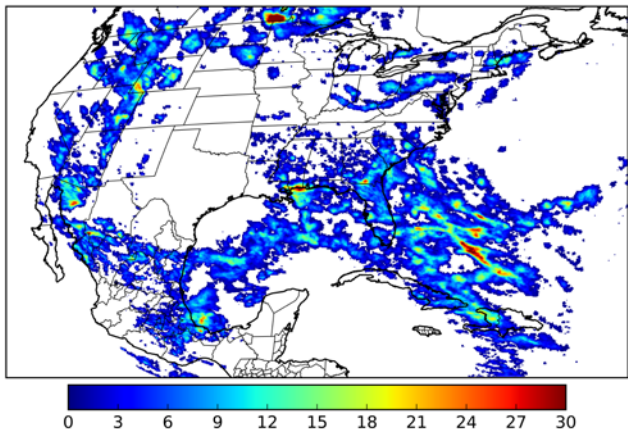
Geostationary Lightning Mapper Gridded Products Daily Summary



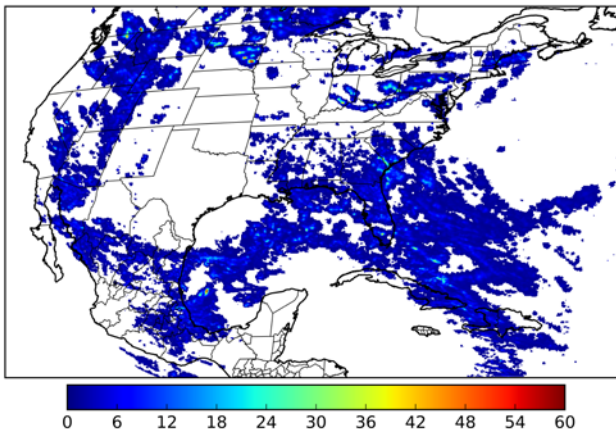
Overall Summary Statistics for 1200Z-1200Z ending on 07/18/2018

28.6% of grid cells detected lightning – **99.8%** of the day had GLM coverage – Duration of GLM outage(s): **3 minute(s)**

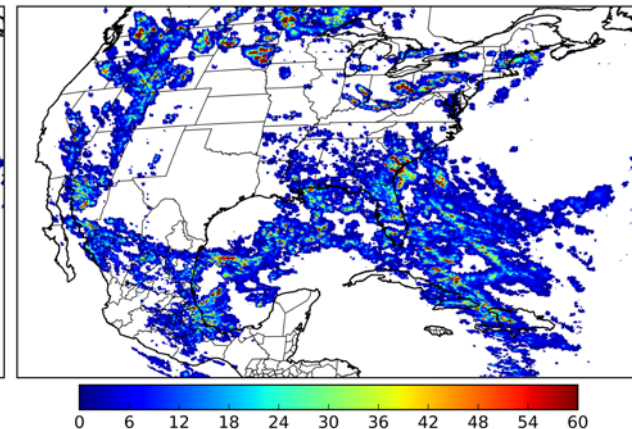
Fraction of the Day With Lightning (%)



Mean 5-min FED



Max 5-min FED



FED Summary Statistics

1-min FED

Max 1-min FED: **49 flashes/min**

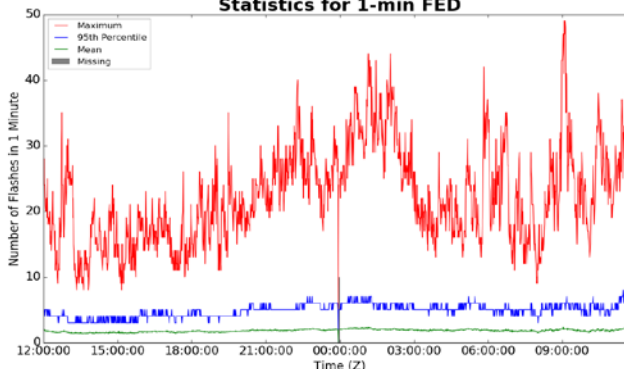
Max min-to-min increase: **17 flashes**

5-min/1-min Updating FED

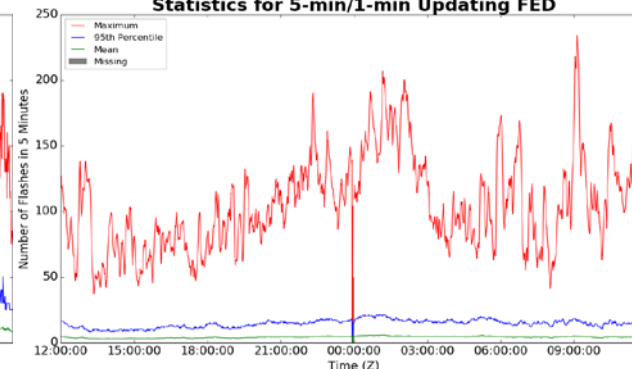
Max 5-min FED: **234 flashes/5min**

Max min-to-min increase: **45 flashes**

Statistics for 1-min FED



Statistics for 5-min/1-min Updating FED



Total Optical Energy and Average Flash Area Summary Statistics

5-min/1-min Updating TOE

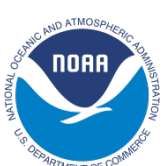
Max 5-min TOE: **196.0 fJ**

Max min-to-min increase: **186.9 fJ**

5-min/1-min Updating AFA

Max 5-min AFA: **9620.0 km²**

Max min-to-min increase: **6722.0 km²**



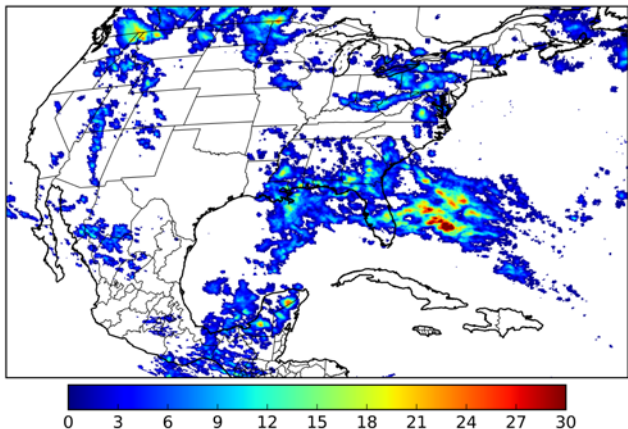
Geostationary Lightning Mapper Gridded Products Daily Summary



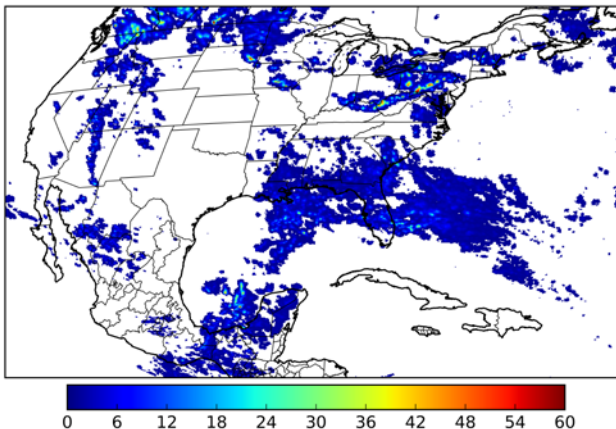
Overall Summary Statistics for 1200Z-1200Z ending on 07/19/2018

20.9% of grid cells detected lightning – **83.1%** of the day had GLM coverage – Duration of GLM outage(s): **244 minute(s)**

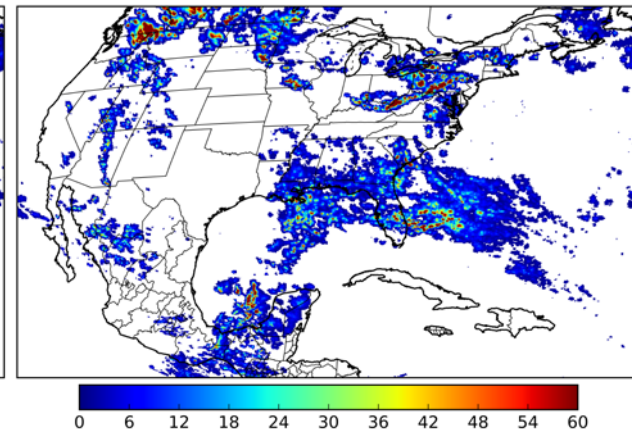
Fraction of the Day With Lightning (%)



Mean 5-min FED



Max 5-min FED



FED Summary Statistics

1-min FED

Max 1-min FED: **49 flashes/min**

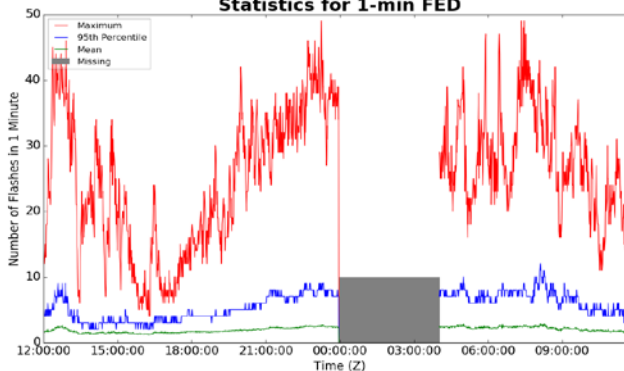
Max min-to-min increase: **18 flashes**

5-min/1-min Updating FED

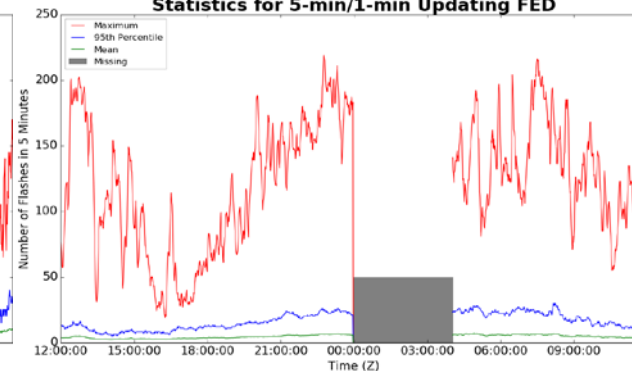
Max 5-min FED: **219 flashes/5min**

Max min-to-min increase: **67 flashes**

Statistics for 1-min FED



Statistics for 5-min/1-min Updating FED



Total Optical Energy and Average Flash Area Summary Statistics

5-min/1-min Updating TOE

Max 5-min TOE: **196.6 fJ**

Max min-to-min increase: **194.7 fJ**

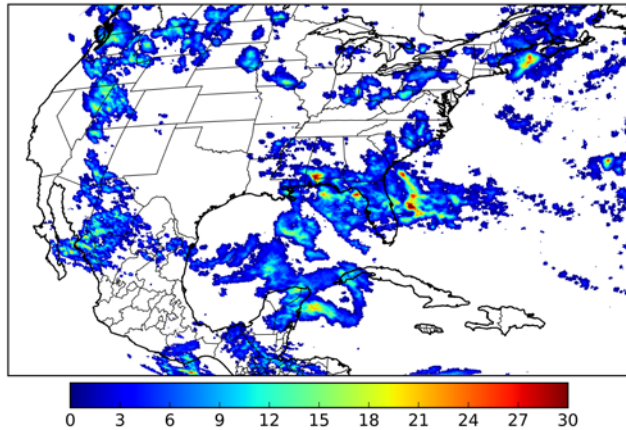
5-min/1-min Updating AFA

Max 5-min AFA: **9240.0 km²**

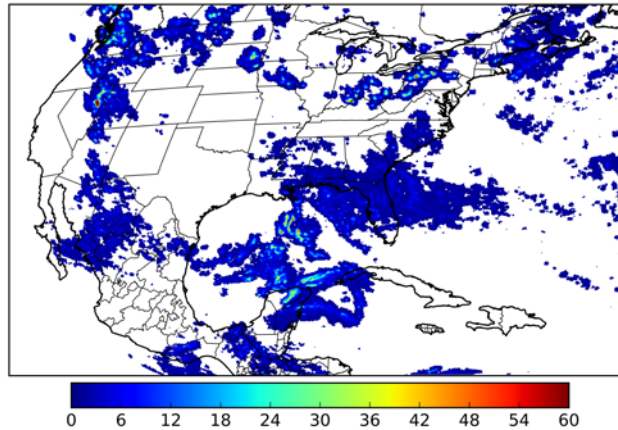
Max min-to-min increase: **7488.0 km²**

24.0% of grid cells detected lightning – **100.0%** of the day had GLM coverage – Duration of GLM outage(s): **0 minute(s)**

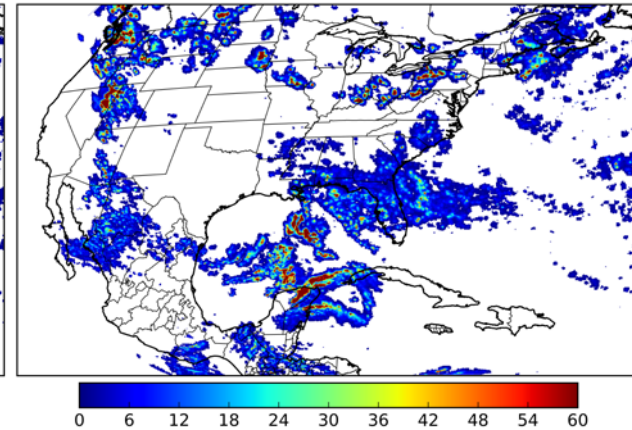
Fraction of the Day With Lightning (%)



Mean 5-min FED



Max 5-min FED



FED Summary Statistics

1-min FED

Max 1-min FED: **57 flashes/min**

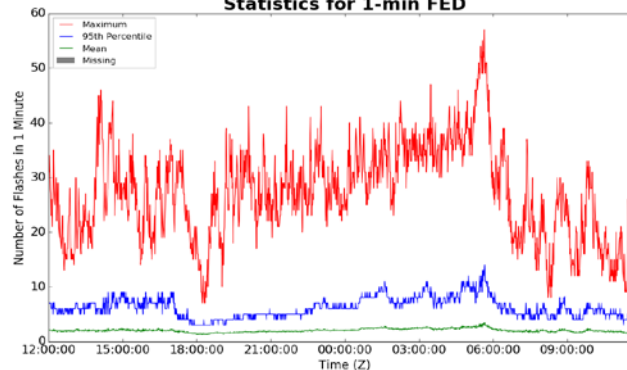
Max min-to-min increase: **22 flashes**

5-min/1-min Updating FED

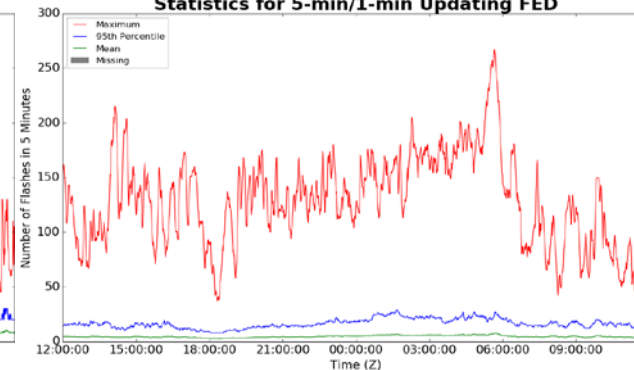
Max 5-min FED: **267 flashes/5min**

Max min-to-min increase: **33 flashes**

Statistics for 1-min FED



Statistics for 5-min/1-min Updating FED



Total Optical Energy and Average Flash Area Summary Statistics

5-min/1-min Updating TOE

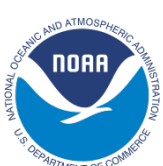
Max 5-min TOE: **196.6 fJ**

Max min-to-min increase: **189.9 fJ**

5-min/1-min Updating AFA

Max 5-min AFA: **9902.0 km²**

Max min-to-min increase: **7138.0 km²**



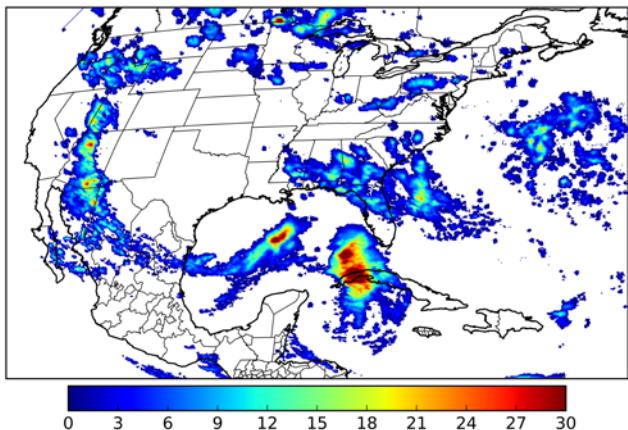
Geostationary Lightning Mapper Gridded Products Daily Summary



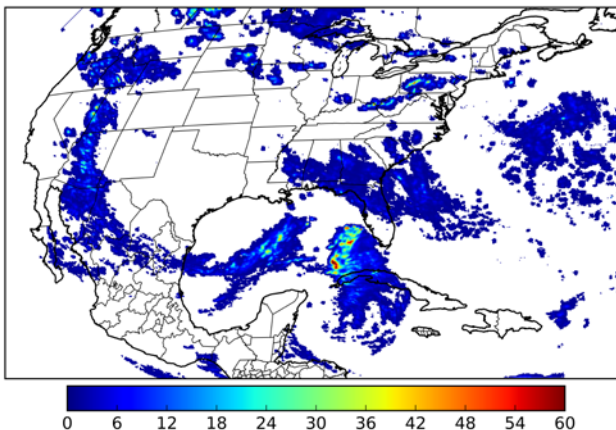
Overall Summary Statistics for 1200Z-1200Z ending on 07/21/2018

21.2% of grid cells detected lightning – **100.0%** of the day had GLM coverage – Duration of GLM outage(s): **0 minute(s)**

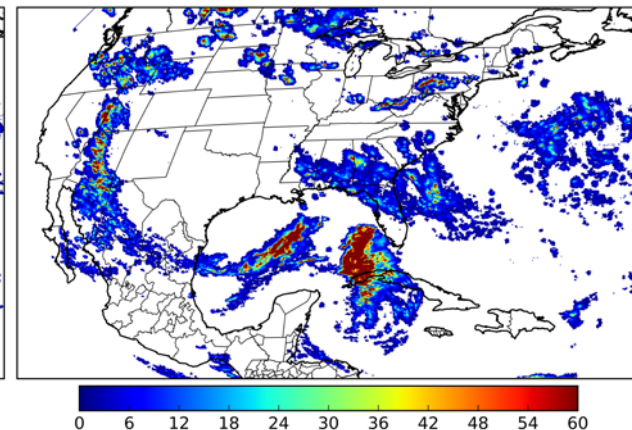
Fraction of the Day With Lightning (%)



Mean 5-min FED



Max 5-min FED



FED Summary Statistics

1-min FED

Max 1-min FED: **56 flashes/min**

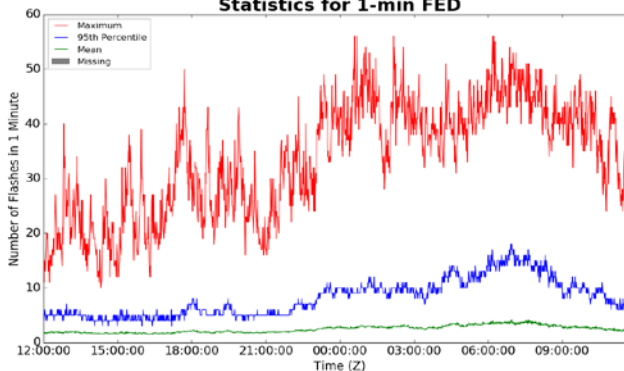
Max min-to-min increase: **20 flashes**

5-min/1-min Updating FED

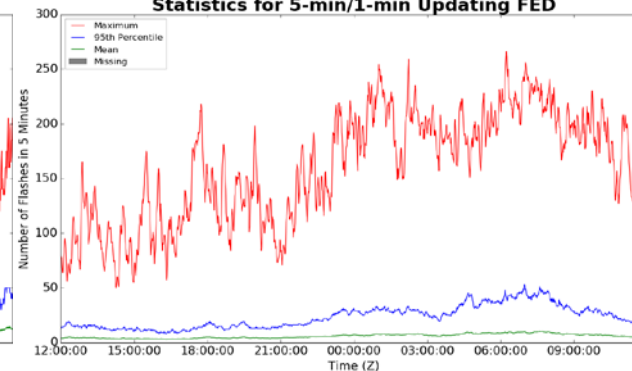
Max 5-min FED: **266 flashes/5min**

Max min-to-min increase: **40 flashes**

Statistics for 1-min FED



Statistics for 5-min/1-min Updating FED



Total Optical Energy and Average Flash Area Summary Statistics

5-min/1-min Updating TOE

Max 5-min TOE: **196.4 fJ**

Max min-to-min increase: **188.2 fJ**

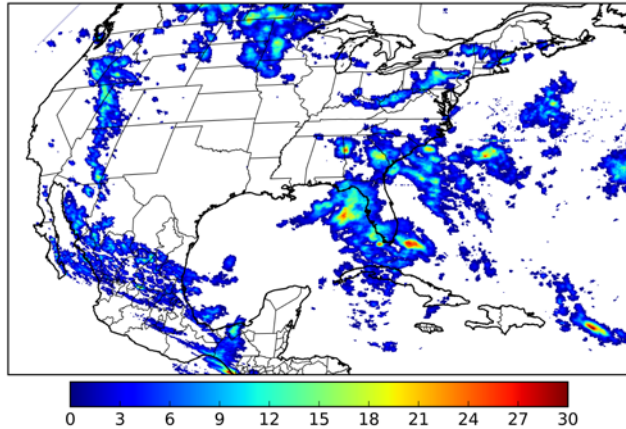
5-min/1-min Updating AFA

Max 5-min AFA: **9258.0 km²**

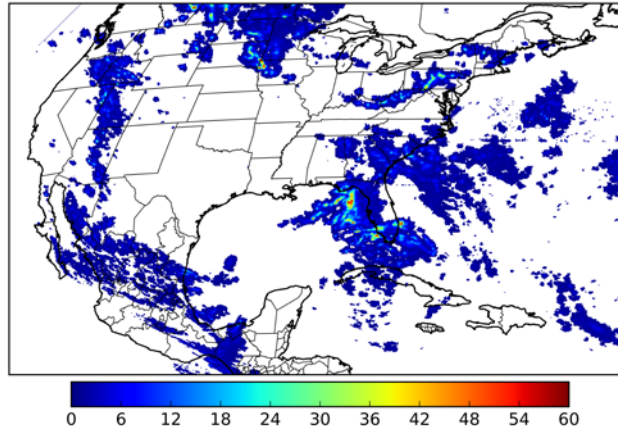
Max min-to-min increase: **8792.0 km²**

20.5% of grid cells detected lightning – **99.9%** of the day had GLM coverage – Duration of GLM outage(s): **2 minute(s)**

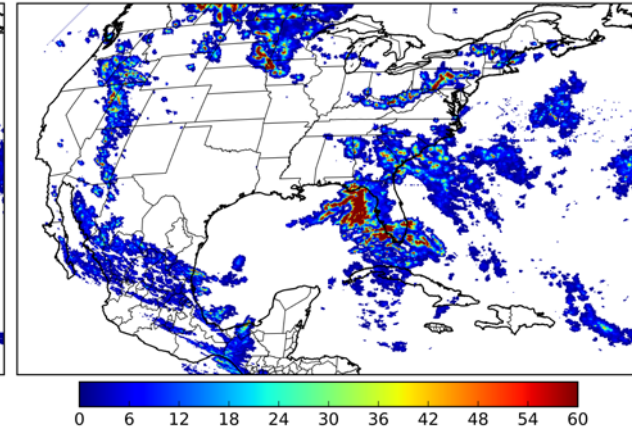
Fraction of the Day With Lightning (%)



Mean 5-min FED



Max 5-min FED



FED Summary Statistics

1-min FED

Max 1-min FED: **56 flashes/min**

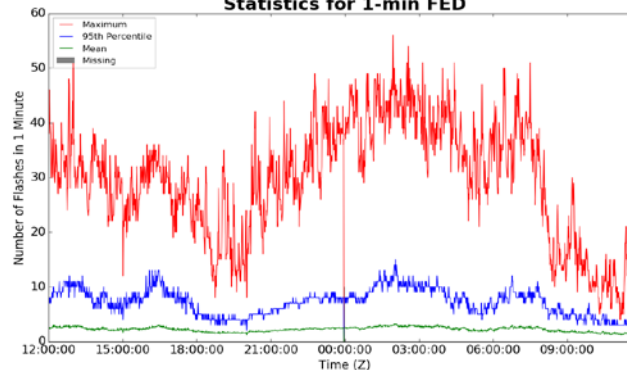
Max min-to-min increase: **19 flashes**

5-min/1-min Updating FED

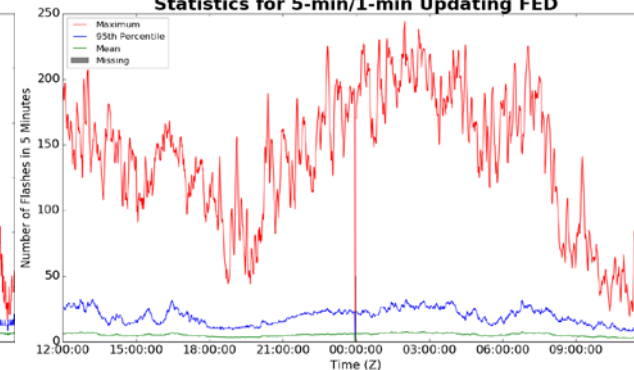
Max 5-min FED: **244 flashes/5min**

Max min-to-min increase: **61 flashes**

Statistics for 1-min FED



Statistics for 5-min/1-min Updating FED



Total Optical Energy and Average Flash Area Summary Statistics

5-min/1-min Updating TOE

Max 5-min TOE: **194.5 fJ**

Max min-to-min increase: **186.4 fJ**

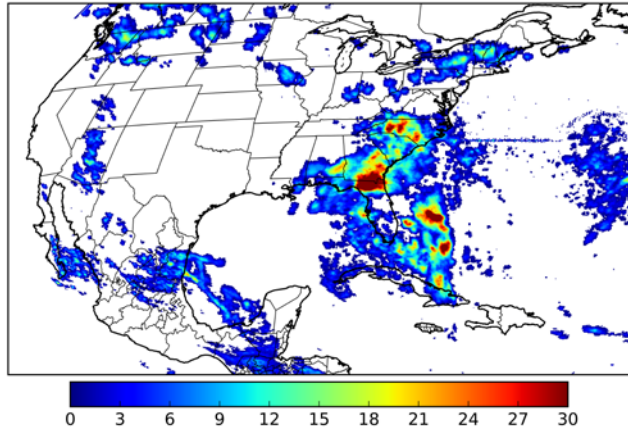
5-min/1-min Updating AFA

Max 5-min AFA: **9064.0 km²**

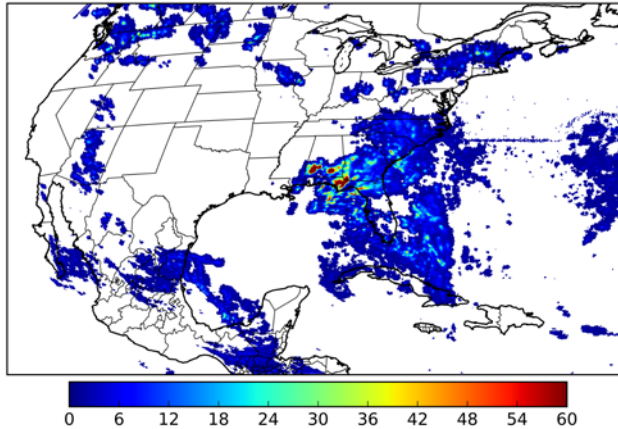
Max min-to-min increase: **6888.0 km²**

20.1% of grid cells detected lightning – **100.0%** of the day had GLM coverage – Duration of GLM outage(s): **0 minute(s)**

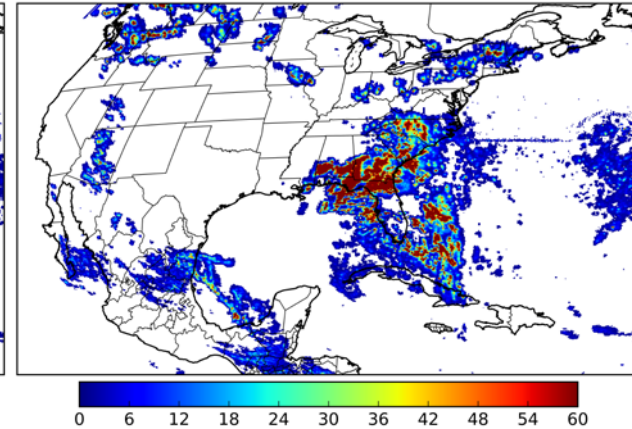
Fraction of the Day With Lightning (%)



Mean 5-min FED



Max 5-min FED



FED Summary Statistics

1-min FED

Max 1-min FED: **72 flashes/min**

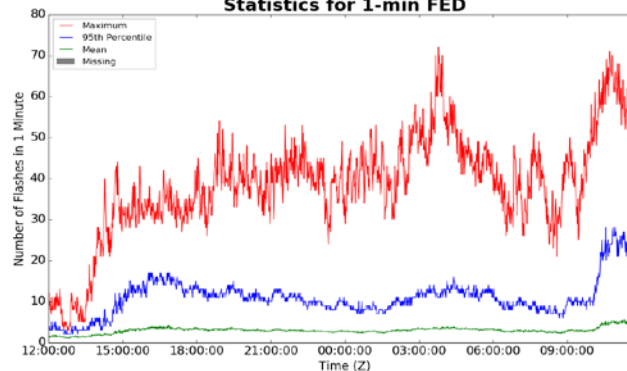
Max min-to-min increase: **22 flashes**

5-min/1-min Updating FED

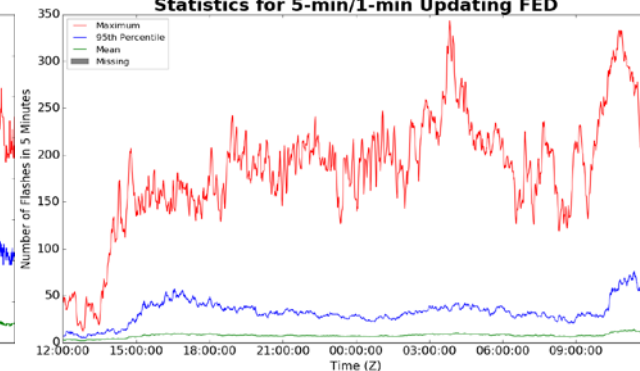
Max 5-min FED: **343 flashes/5min**

Max min-to-min increase: **45 flashes**

Statistics for 1-min FED



Statistics for 5-min/1-min Updating FED



Total Optical Energy and Average Flash Area Summary Statistics

5-min/1-min Updating TOE

Max 5-min TOE: **196.6 fJ**

Max min-to-min increase: **196.3 fJ**

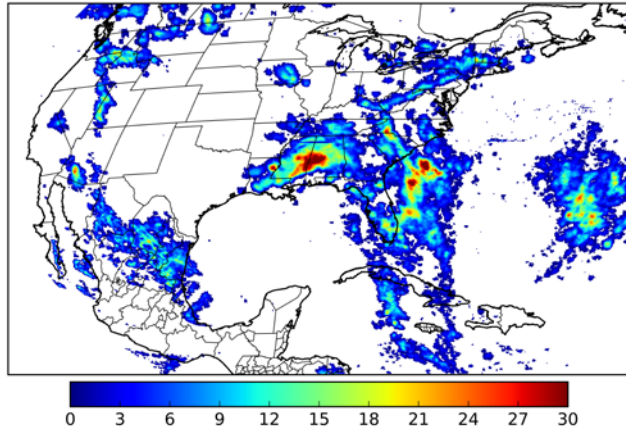
5-min/1-min Updating AFA

Max 5-min AFA: **9946.0 km²**

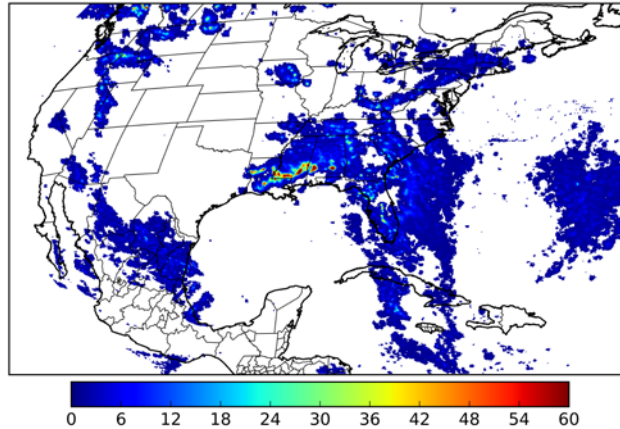
Max min-to-min increase: **8182.0 km²**

22.3% of grid cells detected lightning – **99.4%** of the day had GLM coverage – Duration of GLM outage(s): **9 minute(s)**

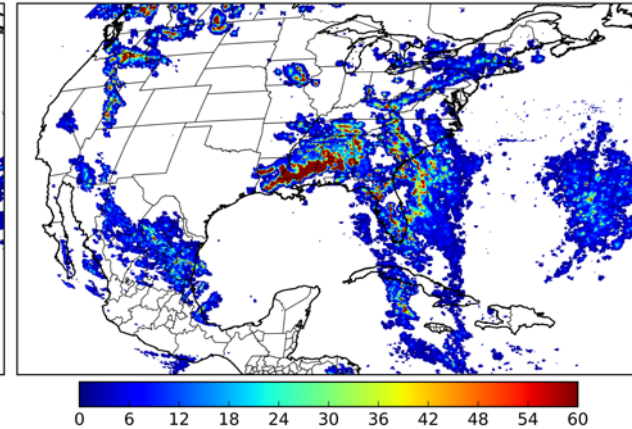
Fraction of the Day With Lightning (%)



Mean 5-min FED



Max 5-min FED



FED Summary Statistics

1-min FED

Max 1-min FED: **62 flashes/min**

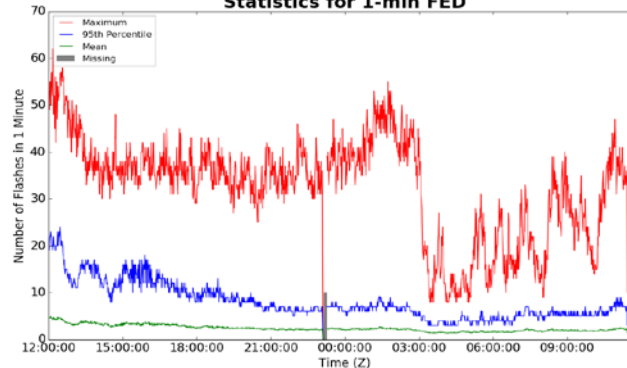
Max min-to-min increase: **33 flashes**

5-min/1-min Updating FED

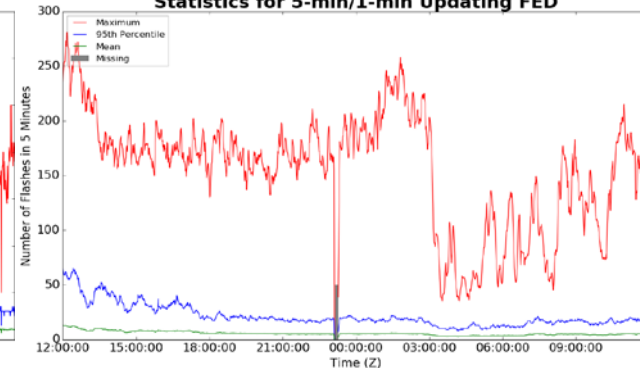
Max 5-min FED: **281 flashes/5min**

Max min-to-min increase: **40 flashes**

Statistics for 1-min FED



Statistics for 5-min/1-min Updating FED



Total Optical Energy and Average Flash Area Summary Statistics

5-min/1-min Updating TOE

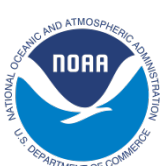
Max 5-min TOE: **196.6 fJ**

Max min-to-min increase: **187.8 fJ**

5-min/1-min Updating AFA

Max 5-min AFA: **8748.0 km²**

Max min-to-min increase: **7200.0 km²**



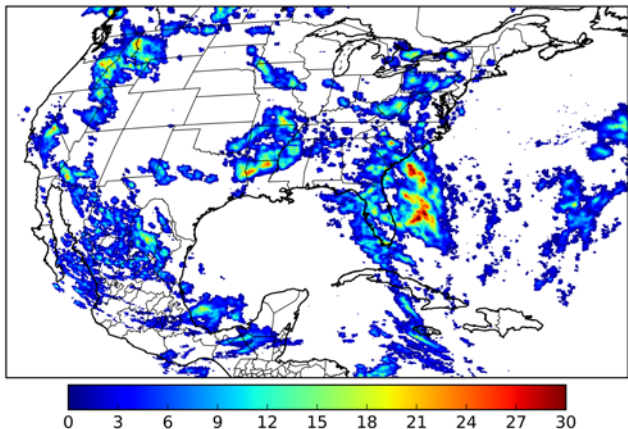
Geostationary Lightning Mapper Gridded Products Daily Summary



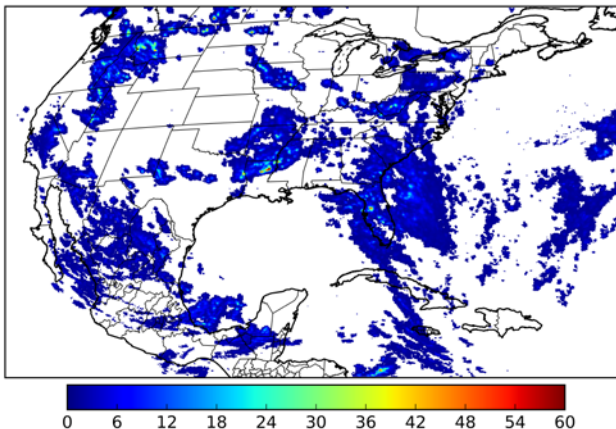
Overall Summary Statistics for 1200Z-1200Z ending on 07/25/2018

24.2% of grid cells detected lightning – **100.0%** of the day had GLM coverage – Duration of GLM outage(s): **0 minute(s)**

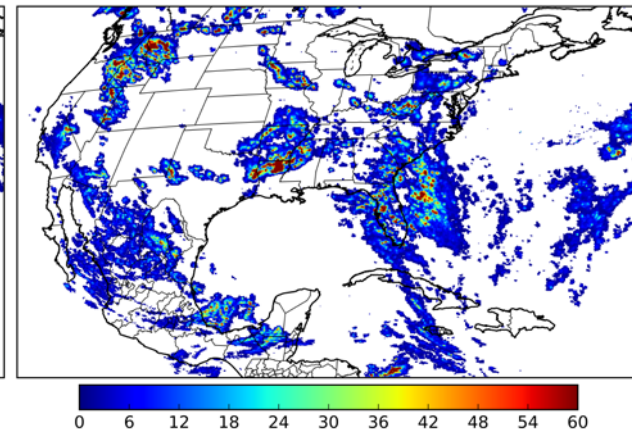
Fraction of the Day With Lightning (%)



Mean 5-min FED



Max 5-min FED



FED Summary Statistics

1-min FED

Max 1-min FED: **48 flashes/min**

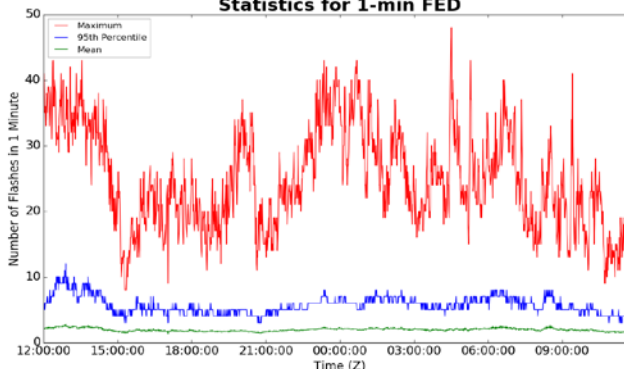
Max min-to-min increase: **18 flashes**

5-min/1-min Updating FED

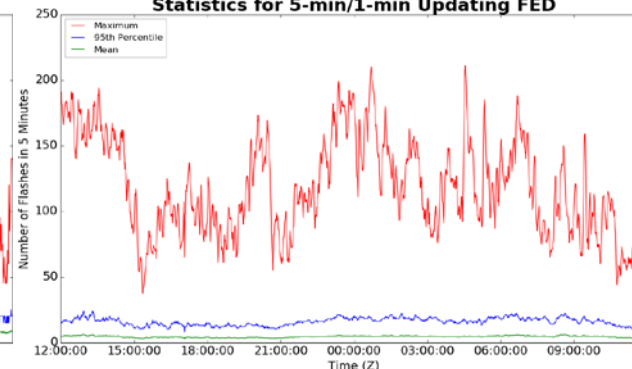
Max 5-min FED: **211 flashes/5min**

Max min-to-min increase: **40 flashes**

Statistics for 1-min FED



Statistics for 5-min/1-min Updating FED



Total Optical Energy and Average Flash Area Summary Statistics

5-min/1-min Updating TOE

Max 5-min TOE: **196.6 fJ**

Max min-to-min increase: **195.5 fJ**

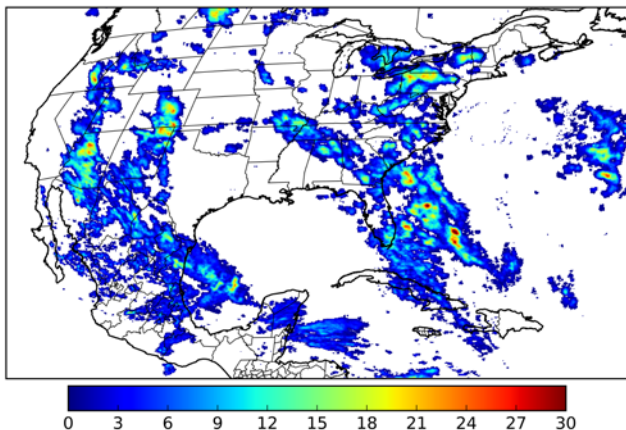
5-min/1-min Updating AFA

Max 5-min AFA: **8824.0 km²**

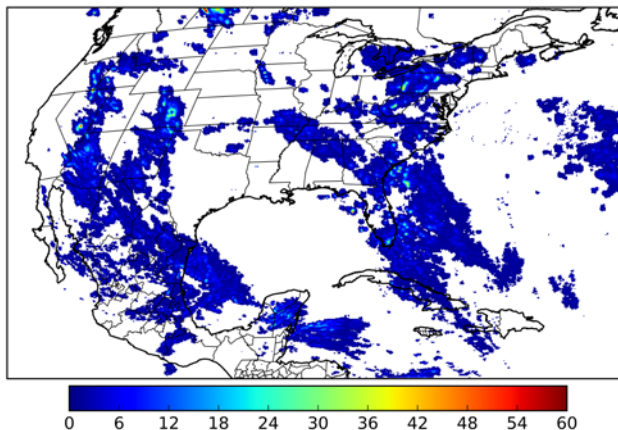
Max min-to-min increase: **6544.0 km²**

24.8% of grid cells detected lightning – **98.7%** of the day had GLM coverage – Duration of GLM outage(s): **19 minute(s)**

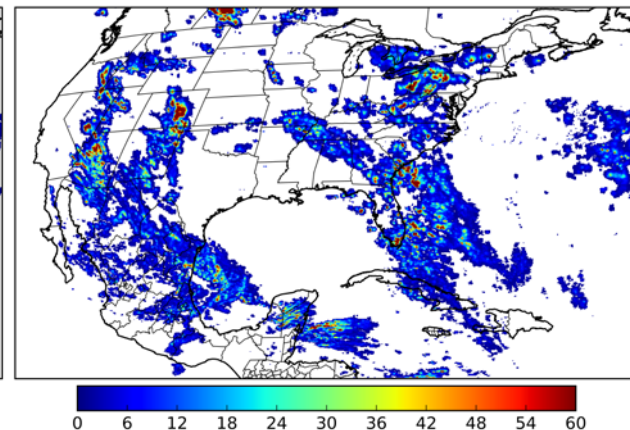
Fraction of the Day With Lightning (%)



Mean 5-min FED



Max 5-min FED



FED Summary Statistics

1-min FED

Max 1-min FED: **46 flashes/min**

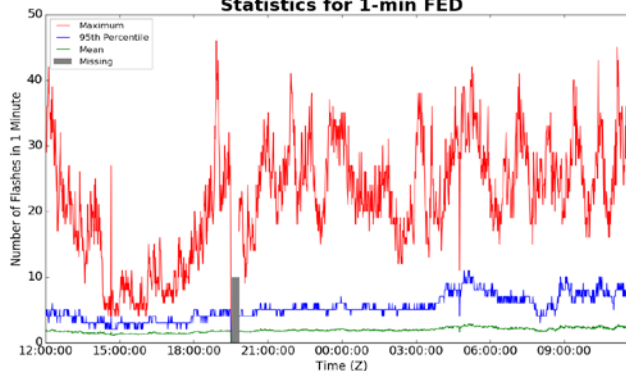
Max min-to-min increase: **20 flashes**

5-min/1-min Updating FED

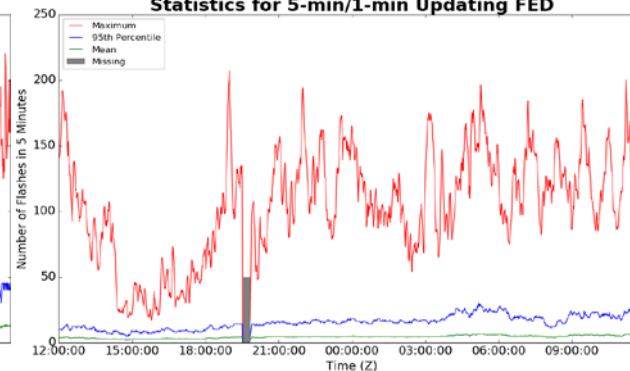
Max 5-min FED: **207 flashes/5min**

Max min-to-min increase: **34 flashes**

Statistics for 1-min FED



Statistics for 5-min/1-min Updating FED



Total Optical Energy and Average Flash Area Summary Statistics

5-min/1-min Updating TOE

Max 5-min TOE: **196.6 fJ**

Max min-to-min increase: **189.1 fJ**

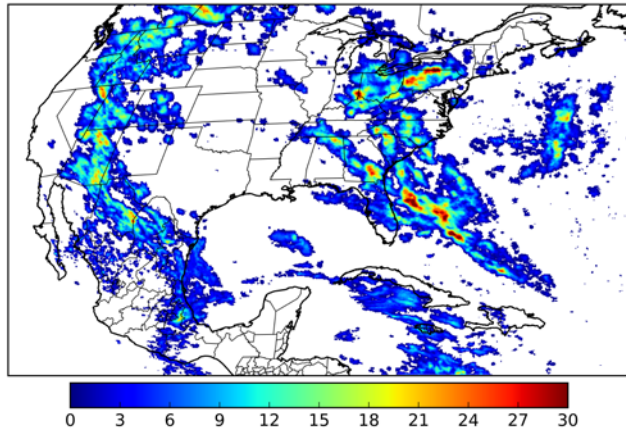
5-min/1-min Updating AFA

Max 5-min AFA: **9988.0 km²**

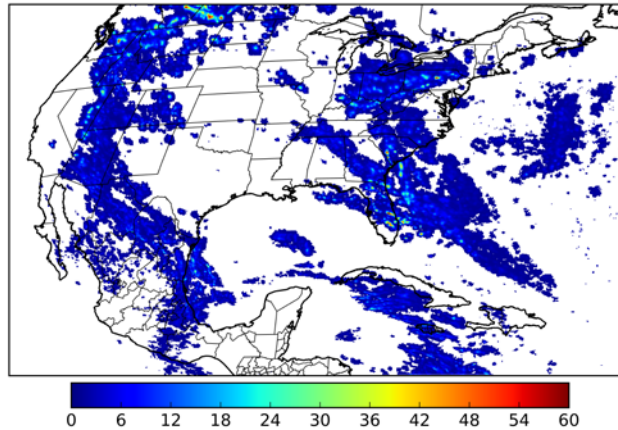
Max min-to-min increase: **6922.0 km²**

27.6% of grid cells detected lightning – **93.4%** of the day had GLM coverage – Duration of GLM outage(s): **95 minute(s)**

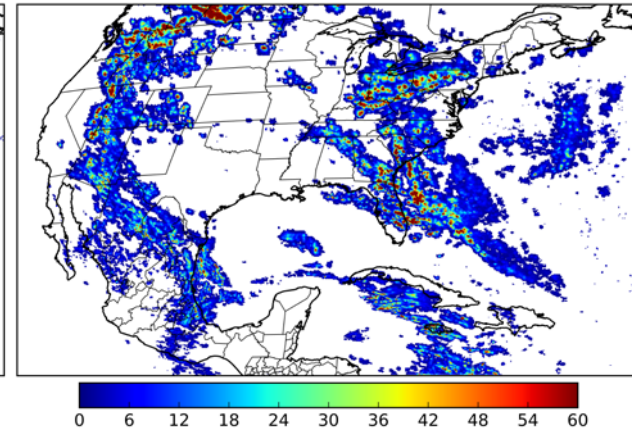
Fraction of the Day With Lightning (%)



Mean 5-min FED



Max 5-min FED



FED Summary Statistics

1-min FED

Max 1-min FED: **52 flashes/min**

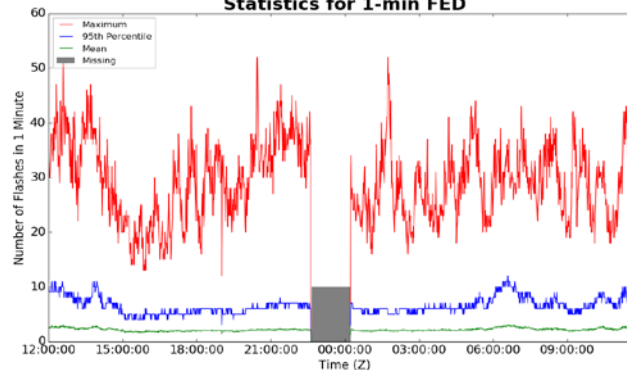
Max min-to-min increase: **26 flashes**

5-min/1-min Updating FED

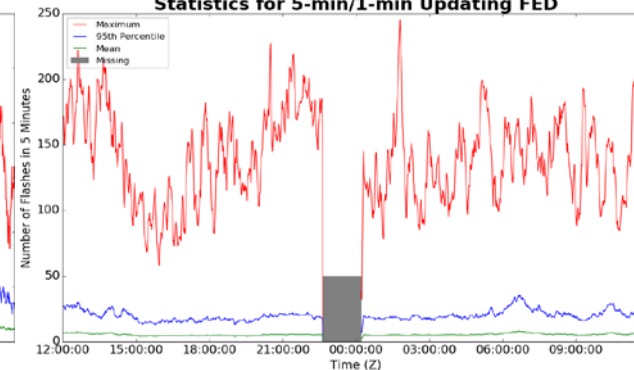
Max 5-min FED: **245 flashes/5min**

Max min-to-min increase: **40 flashes**

Statistics for 1-min FED



Statistics for 5-min/1-min Updating FED



Total Optical Energy and Average Flash Area Summary Statistics

5-min/1-min Updating TOE

Max 5-min TOE: **196.6 fJ**

Max min-to-min increase: **195.4 fJ**

5-min/1-min Updating AFA

Max 5-min AFA: **9018.0 km²**

Max min-to-min increase: **6954.0 km²**



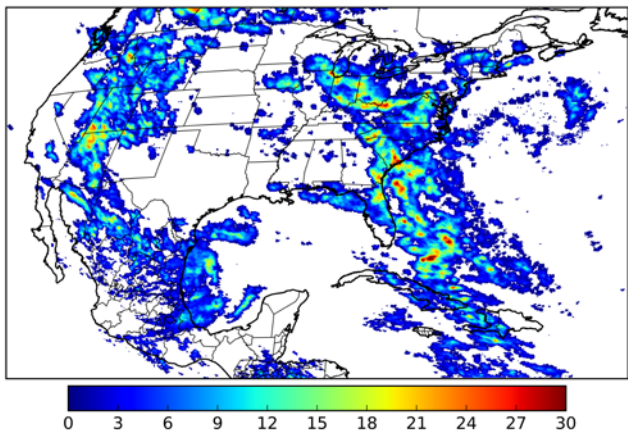
Geostationary Lightning Mapper Gridded Products Daily Summary



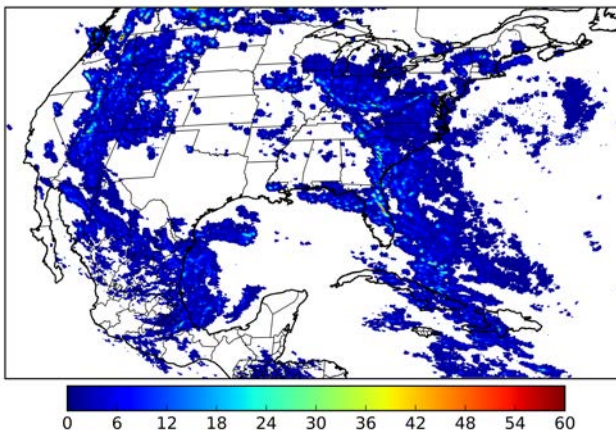
Overall Summary Statistics for 1200Z-1200Z ending on 07/28/2018

31.2% of grid cells detected lightning – **100.0%** of the day had GLM coverage – Duration of GLM outage(s): **0 minute(s)**

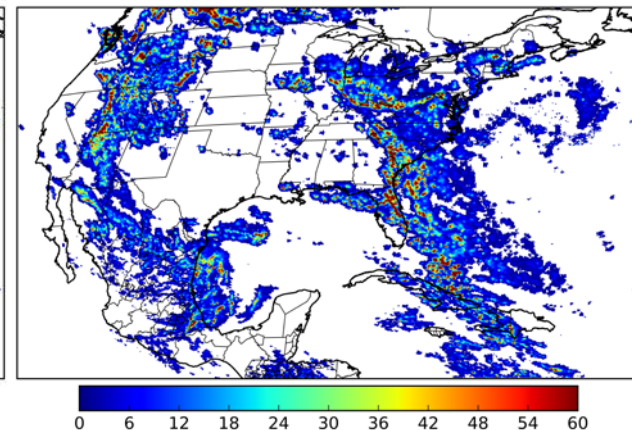
Fraction of the Day With Lightning (%)



Mean 5-min FED



Max 5-min FED



FED Summary Statistics

1-min FED

Max 1-min FED: **51 flashes/min**

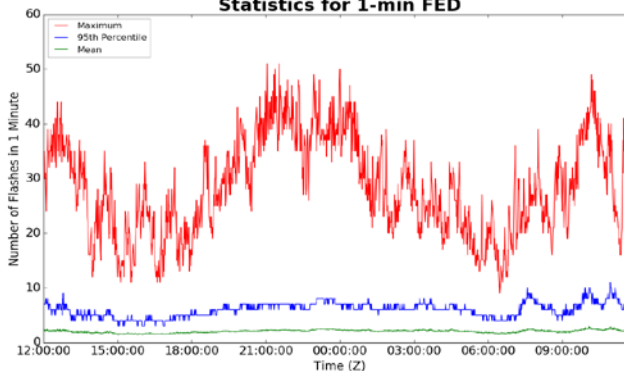
Max min-to-min increase: **27 flashes**

5-min/1-min Updating FED

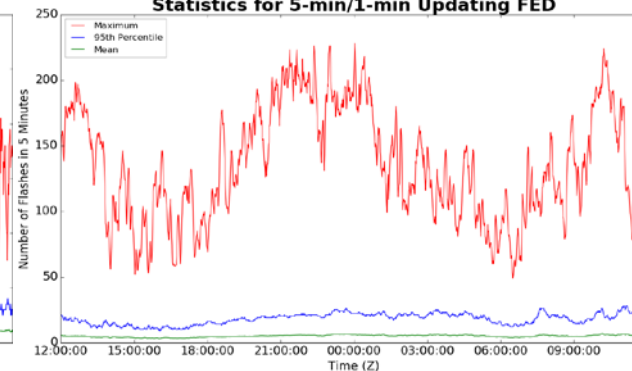
Max 5-min FED: **228 flashes/5min**

Max min-to-min increase: **38 flashes**

Statistics for 1-min FED



Statistics for 5-min/1-min Updating FED



Total Optical Energy and Average Flash Area Summary Statistics

5-min/1-min Updating TOE

Max 5-min TOE: **196.4 fJ**

Max min-to-min increase: **190.1 fJ**

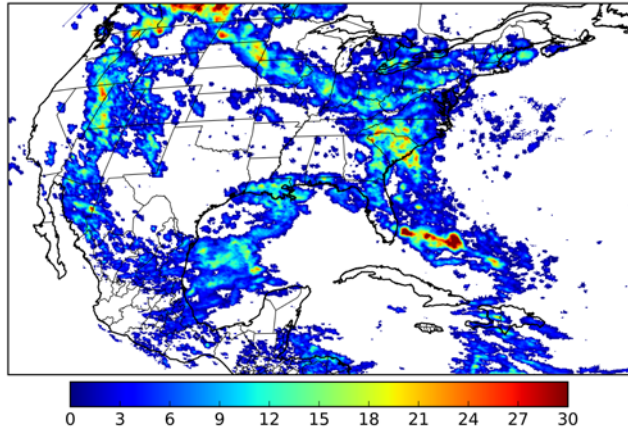
5-min/1-min Updating AFA

Max 5-min AFA: **9396.0 km²**

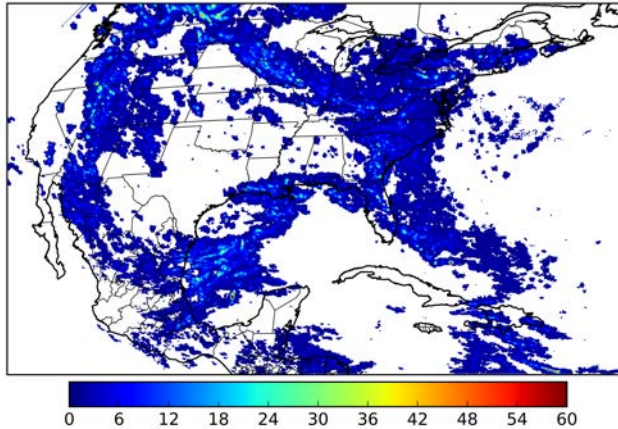
Max min-to-min increase: **7870.0 km²**

33.5% of grid cells detected lightning – **99.7%** of the day had GLM coverage – Duration of GLM outage(s): **4 minute(s)**

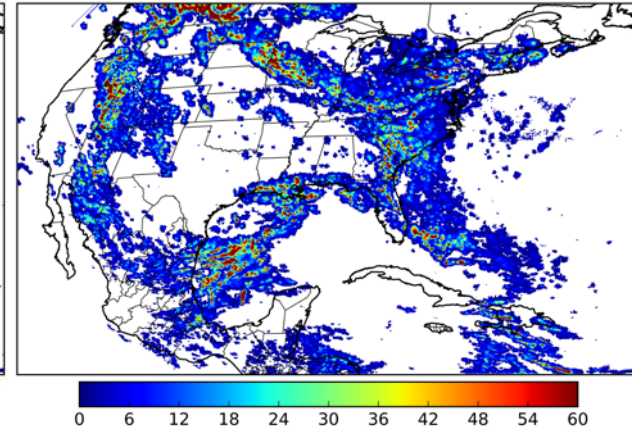
Fraction of the Day With Lightning (%)



Mean 5-min FED



Max 5-min FED



FED Summary Statistics

1-min FED

Max 1-min FED: **54 flashes/min**

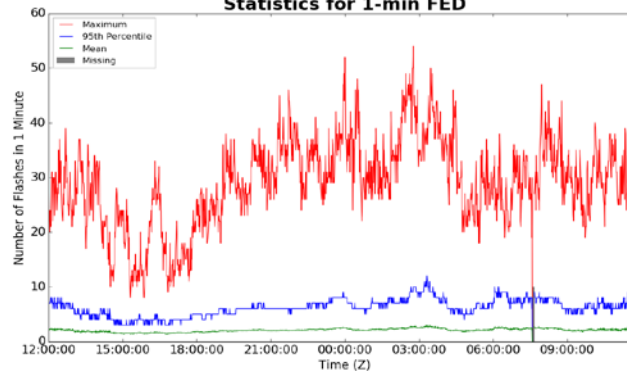
Max min-to-min increase: **22 flashes**

5-min/1-min Updating FED

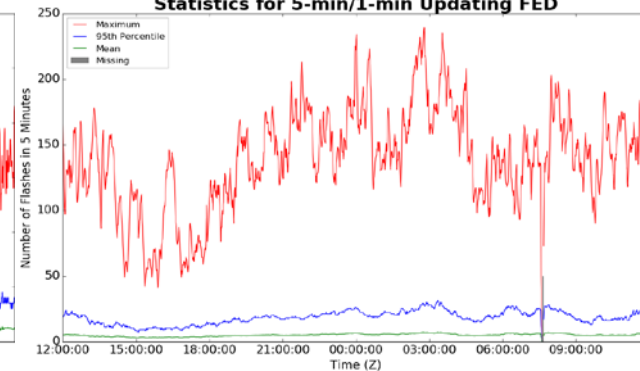
Max 5-min FED: **239 flashes/5min**

Max min-to-min increase: **44 flashes**

Statistics for 1-min FED



Statistics for 5-min/1-min Updating FED



Total Optical Energy and Average Flash Area Summary Statistics

5-min/1-min Updating TOE

Max 5-min TOE: **196.6 fJ**

Max min-to-min increase: **195.9 fJ**

5-min/1-min Updating AFA

Max 5-min AFA: **9980.0 km²**

Max min-to-min increase: **7502.0 km²**



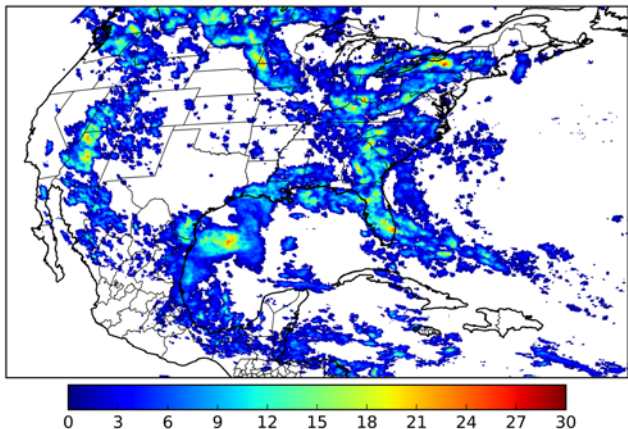
Geostationary Lightning Mapper Gridded Products Daily Summary



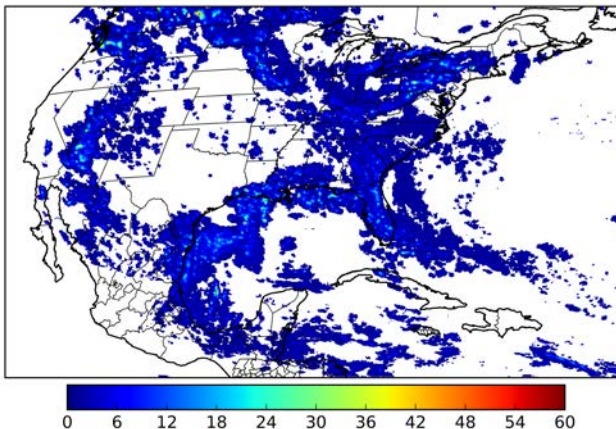
Overall Summary Statistics for 1200Z-1200Z ending on 07/30/2018

31.8% of grid cells detected lightning – **94.0%** of the day had GLM coverage – Duration of GLM outage(s): **87 minute(s)**

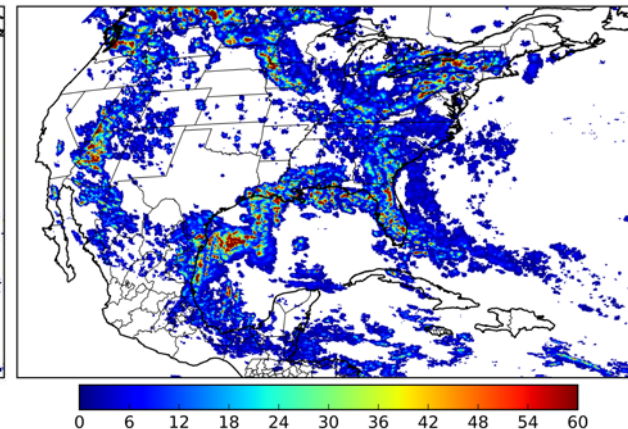
Fraction of the Day With Lightning (%)



Mean 5-min FED



Max 5-min FED



FED Summary Statistics

1-min FED

Max 1-min FED: **53 flashes/min**

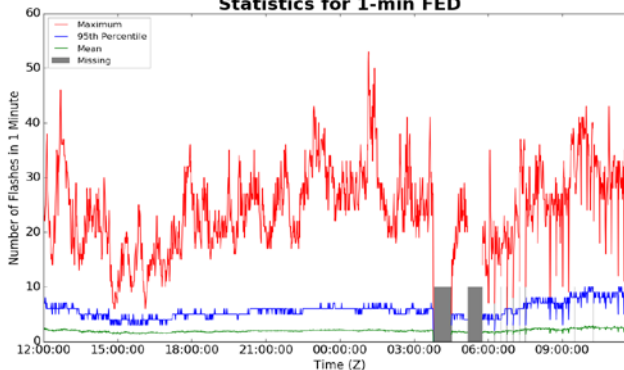
Max min-to-min increase: **25 flashes**

5-min/1-min Updating FED

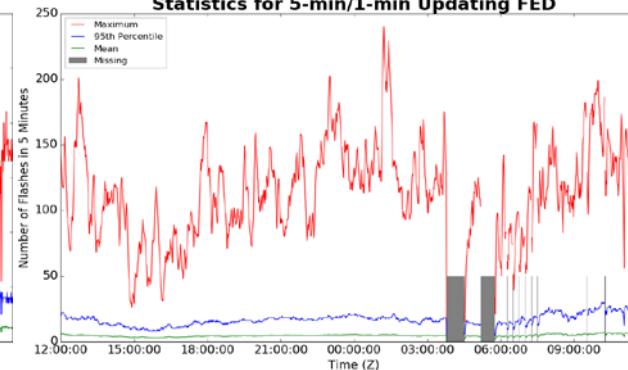
Max 5-min FED: **240 flashes/5min**

Max min-to-min increase: **73 flashes**

Statistics for 1-min FED



Statistics for 5-min/1-min Updating FED



Total Optical Energy and Average Flash Area Summary Statistics

5-min/1-min Updating TOE

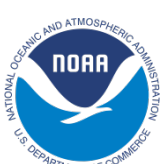
Max 5-min TOE: **196.3 fJ**

Max min-to-min increase: **194.8 fJ**

5-min/1-min Updating AFA

Max 5-min AFA: **9794.0 km²**

Max min-to-min increase: **8118.0 km²**



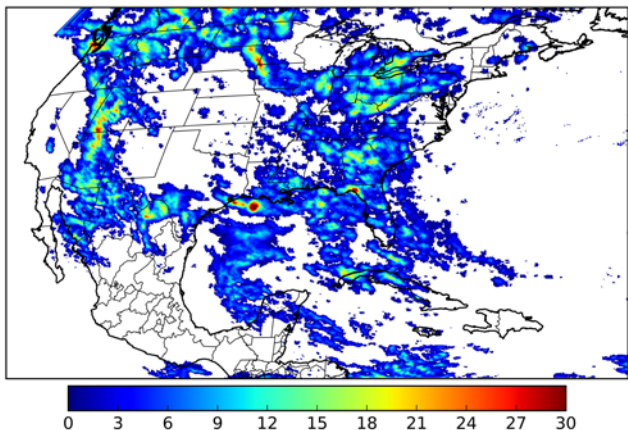
Geostationary Lightning Mapper Gridded Products Daily Summary



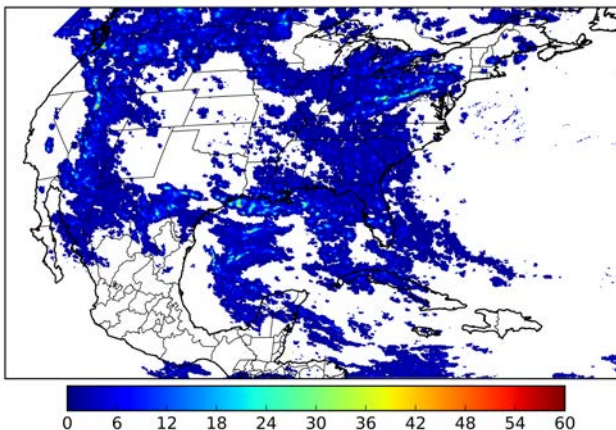
Overall Summary Statistics for 1200Z-1200Z ending on 07/31/2018

33.1% of grid cells detected lightning – **92.8%** of the day had GLM coverage – Duration of GLM outage(s): **103 minute(s)**

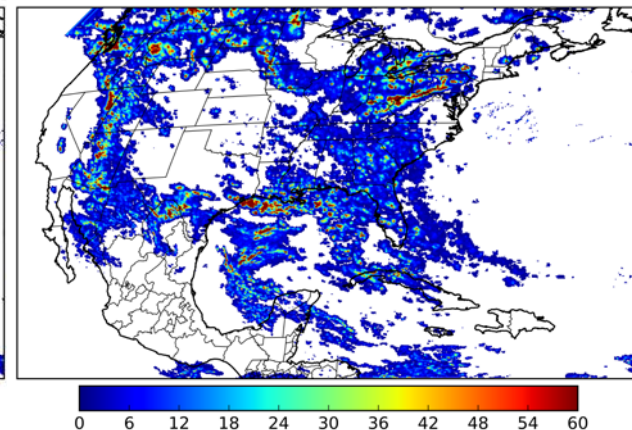
Fraction of the Day With Lightning (%)



Mean 5-min FED



Max 5-min FED



FED Summary Statistics

1-min FED

Max 1-min FED: **54 flashes/min**

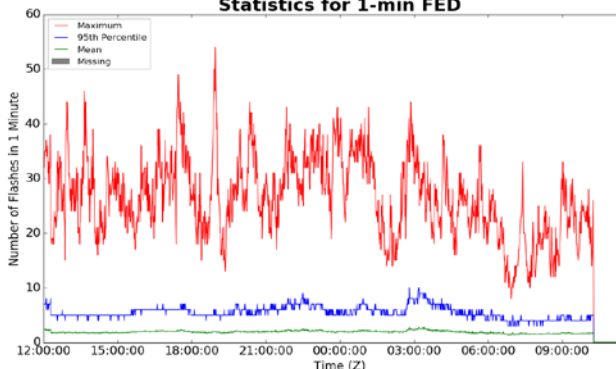
Max min-to-min increase: **33 flashes**

5-min/1-min Updating FED

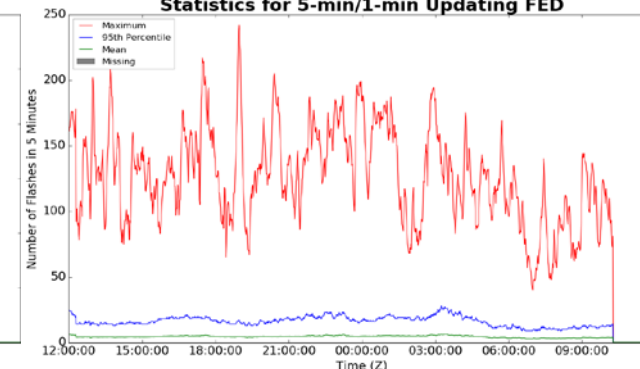
Max 5-min FED: **242 flashes/5min**

Max min-to-min increase: **37 flashes**

Statistics for 1-min FED



Statistics for 5-min/1-min Updating FED



Total Optical Energy and Average Flash Area Summary Statistics

5-min/1-min Updating TOE

Max 5-min TOE: **196.4 fJ**

Max min-to-min increase: **184.2 fJ**

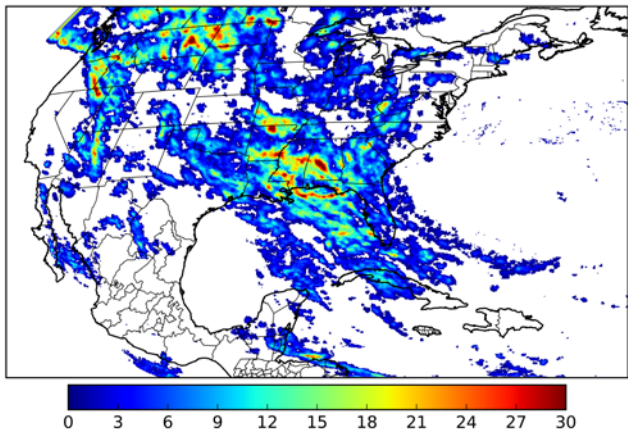
5-min/1-min Updating AFA

Max 5-min AFA: **9844.0 km²**

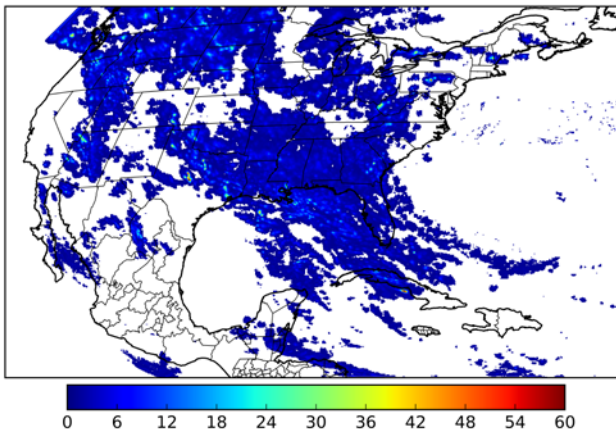
Max min-to-min increase: **8748.0 km²**

31.8% of grid cells detected lightning – **96.8%** of the day had GLM coverage – Duration of GLM outage(s): **46 minute(s)**

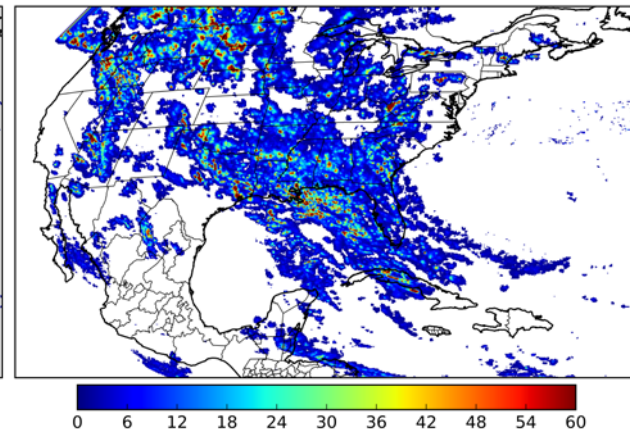
Fraction of the Day With Lightning (%)



Mean 5-min FED



Max 5-min FED



FED Summary Statistics

1-min FED

Max 1-min FED: **48 flashes/min**

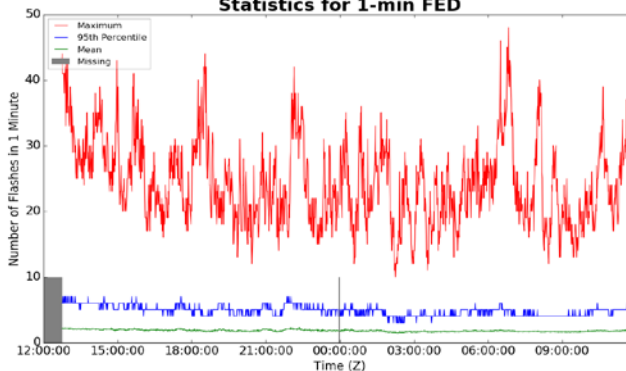
Max min-to-min increase: **21 flashes**

5-min/1-min Updating FED

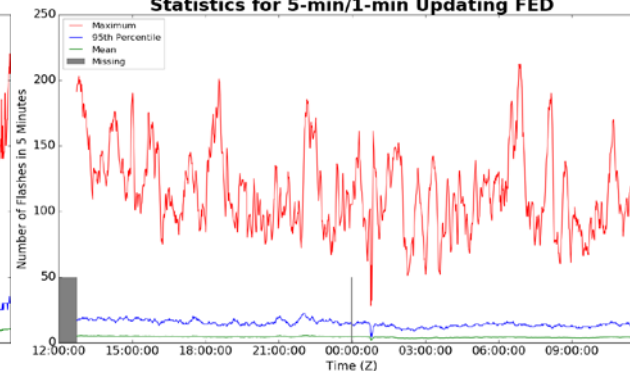
Max 5-min FED: **212 flashes/5min**

Max min-to-min increase: **38 flashes**

Statistics for 1-min FED



Statistics for 5-min/1-min Updating FED



Total Optical Energy and Average Flash Area Summary Statistics

5-min/1-min Updating TOE

Max 5-min TOE: **196.5 fJ**

Max min-to-min increase: **195.1 fJ**

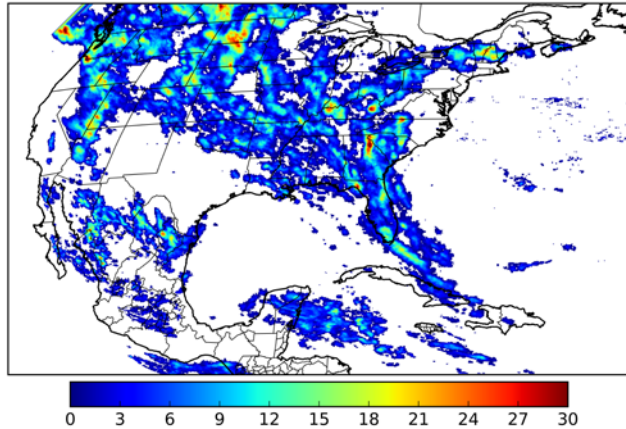
5-min/1-min Updating AFA

Max 5-min AFA: **9978.0 km²**

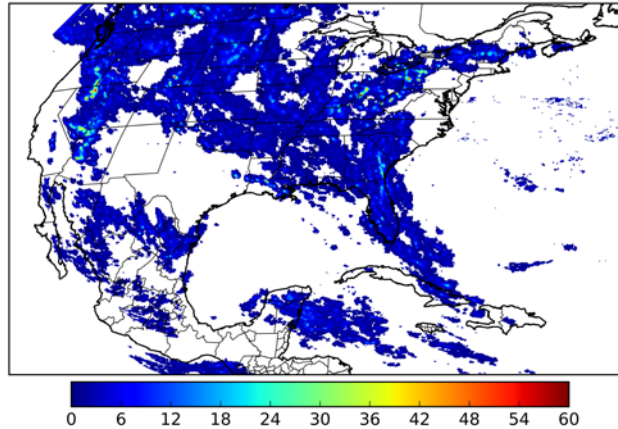
Max min-to-min increase: **8380.0 km²**

29.9% of grid cells detected lightning – **100.0%** of the day had GLM coverage – Duration of GLM outage(s): **0 minute(s)**

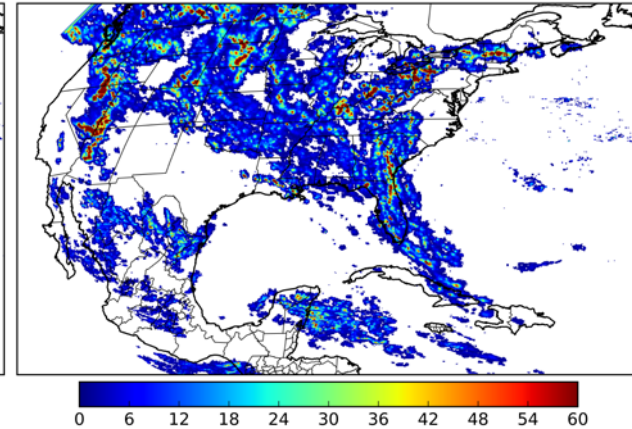
Fraction of the Day With Lightning (%)



Mean 5-min FED



Max 5-min FED



FED Summary Statistics

1-min FED

Max 1-min FED: **48 flashes/min**

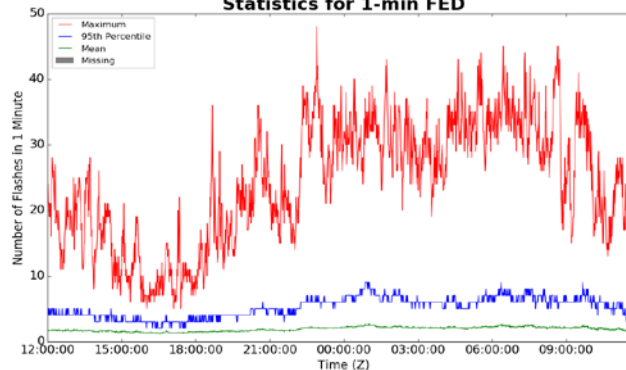
Max min-to-min increase: **16 flashes**

5-min/1-min Updating FED

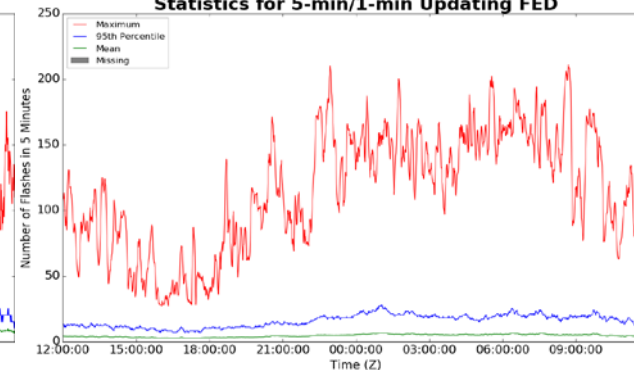
Max 5-min FED: **211 flashes/5min**

Max min-to-min increase: **36 flashes**

Statistics for 1-min FED



Statistics for 5-min/1-min Updating FED



Total Optical Energy and Average Flash Area Summary Statistics

5-min/1-min Updating TOE

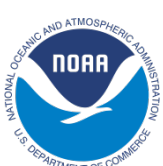
Max 5-min TOE: **196.6 fJ**

Max min-to-min increase: **190.8 fJ**

5-min/1-min Updating AFA

Max 5-min AFA: **9804.0 km²**

Max min-to-min increase: **8098.0 km²**



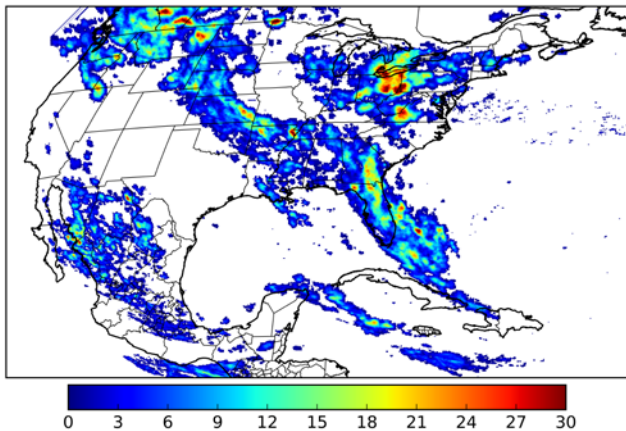
Geostationary Lightning Mapper Gridded Products Daily Summary



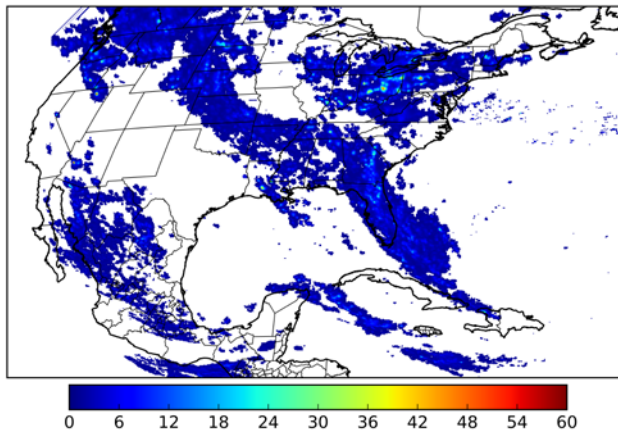
Overall Summary Statistics for 1200Z-1200Z ending on 08/03/2018

24.8% of grid cells detected lightning – **100.0%** of the day had GLM coverage – Duration of GLM outage(s): **0 minute(s)**

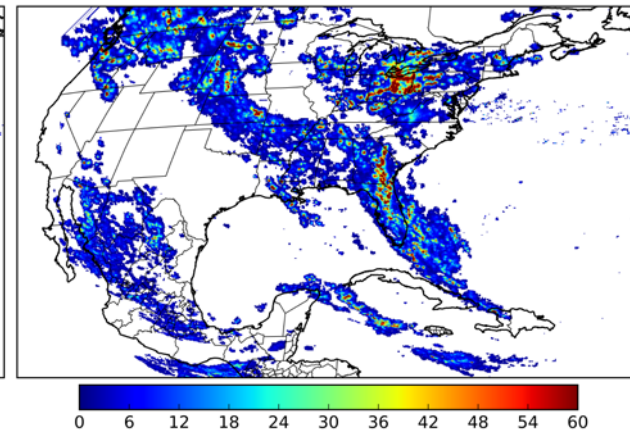
Fraction of the Day With Lightning (%)



Mean 5-min FED



Max 5-min FED



FED Summary Statistics

1-min FED

Max 1-min FED: **48 flashes/min**

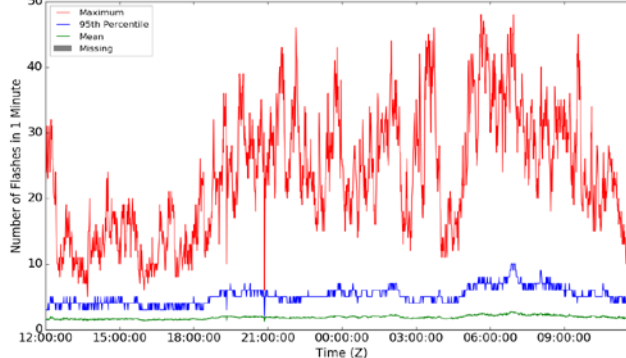
Max min-to-min increase: **18 flashes**

5-min/1-min Updating FED

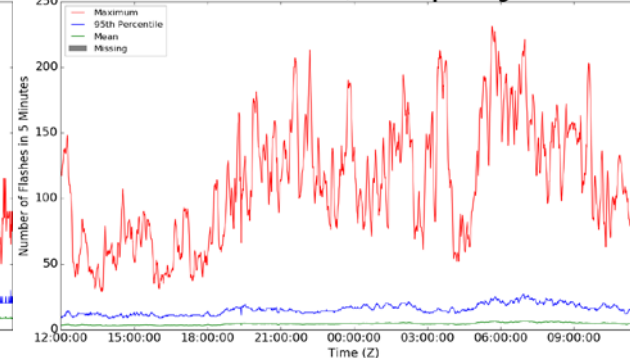
Max 5-min FED: **231 flashes/5min**

Max min-to-min increase: **48 flashes**

Statistics for 1-min FED



Statistics for 5-min/1-min Updating FED



Total Optical Energy and Average Flash Area Summary Statistics

5-min/1-min Updating TOE

Max 5-min TOE: **196.6 fJ**

Max min-to-min increase: **193.2 fJ**

5-min/1-min Updating AFA

Max 5-min AFA: **9888.0 km²**

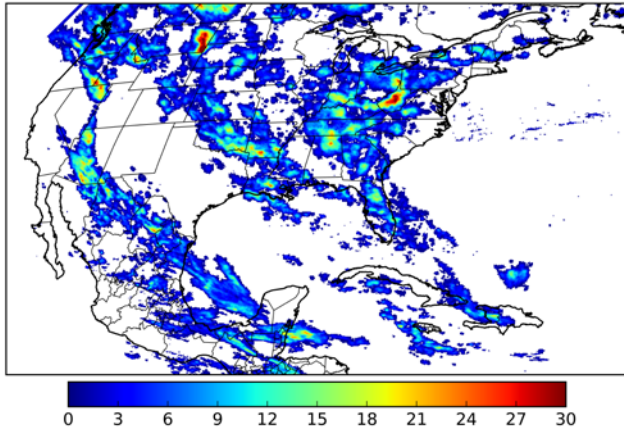
Max min-to-min increase: **8152.0 km²**

Geostationary Lightning Mapper Gridded Products Daily Summary

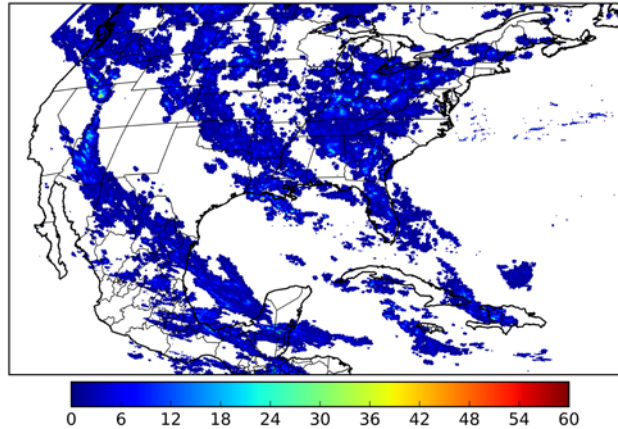
Overall Summary Statistics for 1200Z-1200Z ending on 08/04/2018

27.9% of grid cells detected lightning – **100.0%** of the day had GLM coverage – Duration of GLM outage(s): **0 minute(s)**

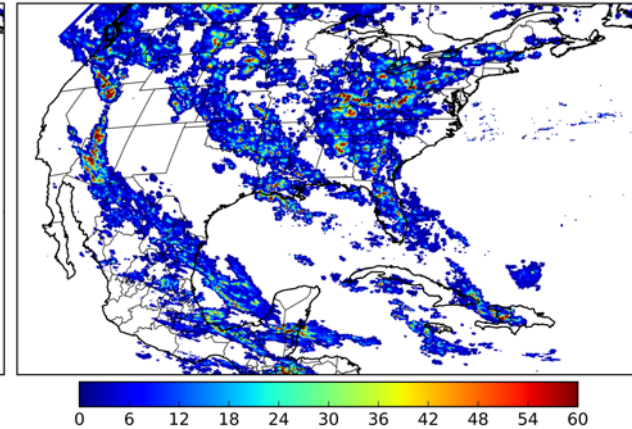
Fraction of the Day With Lightning (%)



Mean 5-min FED



Max 5-min FED



FED Summary Statistics

1-min FED

Max 1-min FED: **44 flashes/min**

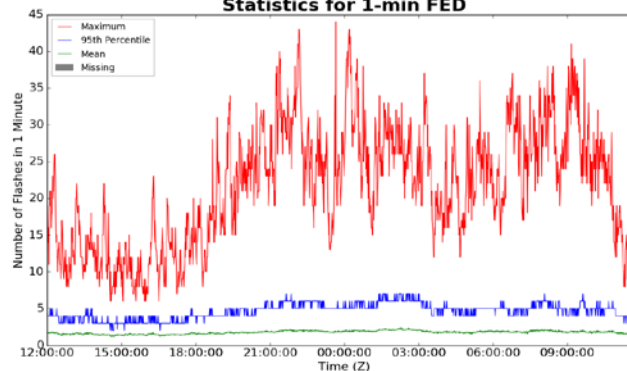
Max min-to-min increase: **37 flashes**

5-min/1-min Updating FED

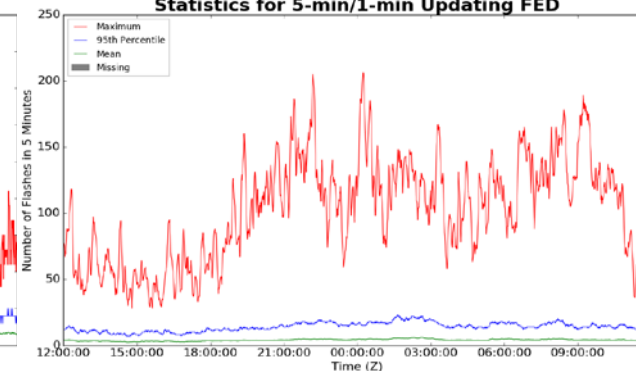
Max 5-min FED: **206 flashes/5min**

Max min-to-min increase: **44 flashes**

Statistics for 1-min FED



Statistics for 5-min/1-min Updating FED



Total Optical Energy and Average Flash Area Summary Statistics

5-min/1-min Updating TOE

Max 5-min TOE: **196.6 fJ**

Max min-to-min increase: **190.7 fJ**

5-min/1-min Updating AFA

Max 5-min AFA: **9864.0 km²**

Max min-to-min increase: **7114.0 km²**



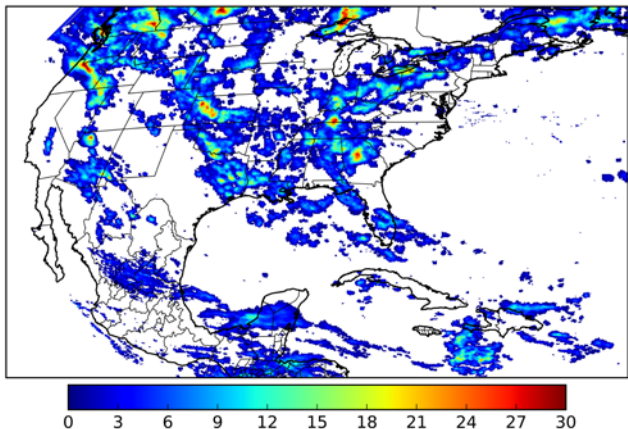
Geostationary Lightning Mapper Gridded Products Daily Summary



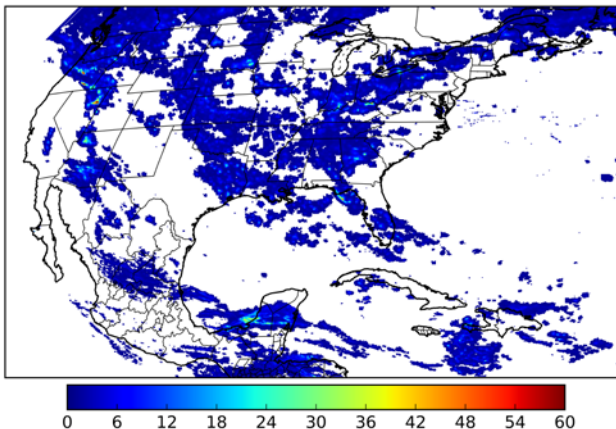
Overall Summary Statistics for 1200Z-1200Z ending on 08/05/2018

28.1% of grid cells detected lightning – **100.0%** of the day had GLM coverage – Duration of GLM outage(s): **0 minute(s)**

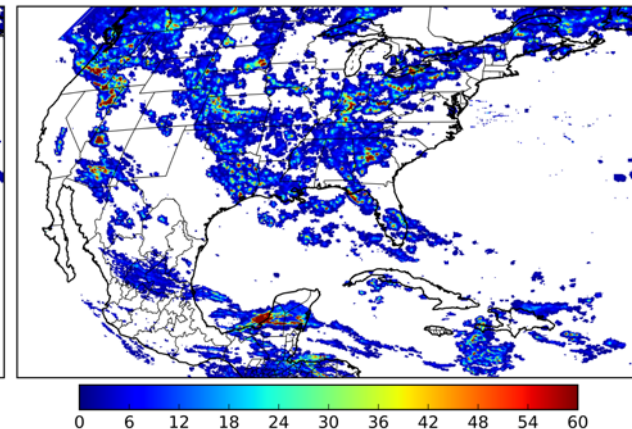
Fraction of the Day With Lightning (%)



Mean 5-min FED



Max 5-min FED



FED Summary Statistics

1-min FED

Max 1-min FED: **46 flashes/min**

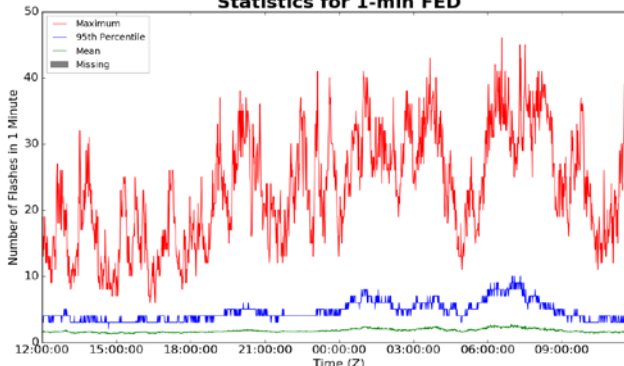
Max min-to-min increase: **23 flashes**

5-min/1-min Updating FED

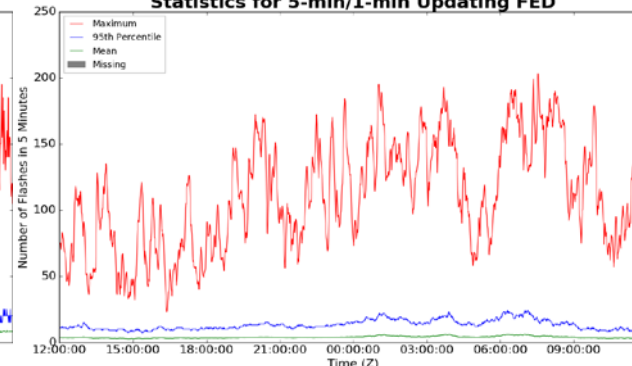
Max 5-min FED: **203 flashes/5min**

Max min-to-min increase: **31 flashes**

Statistics for 1-min FED



Statistics for 5-min/1-min Updating FED



Total Optical Energy and Average Flash Area Summary Statistics

5-min/1-min Updating TOE

Max 5-min TOE: **195.6 fJ**

Max min-to-min increase: **190.1 fJ**

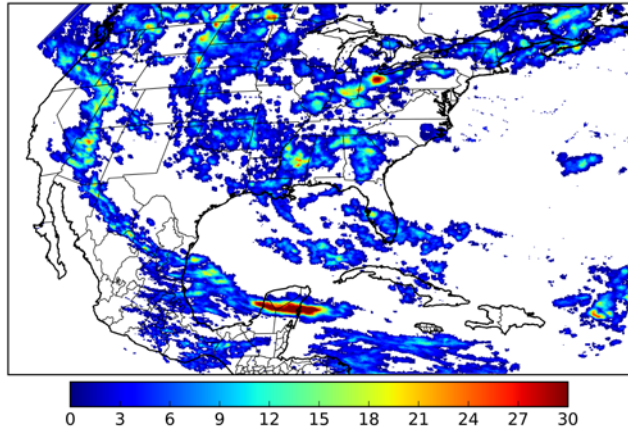
5-min/1-min Updating AFA

Max 5-min AFA: **9494.0 km²**

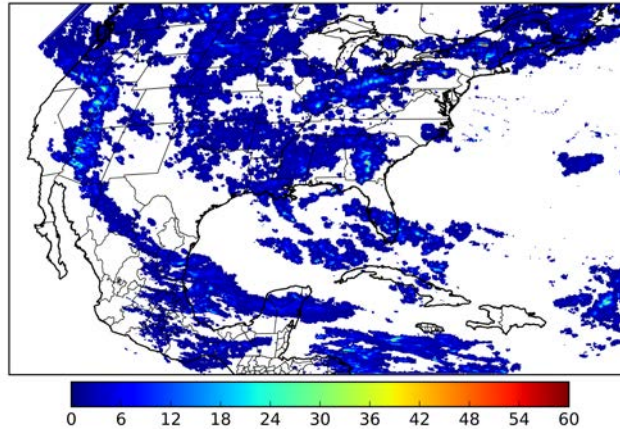
Max min-to-min increase: **8206.0 km²**

32.9% of grid cells detected lightning – **100.0%** of the day had GLM coverage – Duration of GLM outage(s): **0 minute(s)**

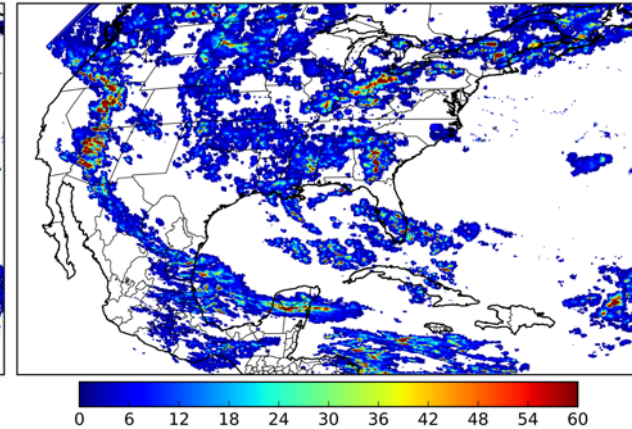
Fraction of the Day With Lightning (%)



Mean 5-min FED



Max 5-min FED



FED Summary Statistics

1-min FED

Max 1-min FED: **51 flashes/min**

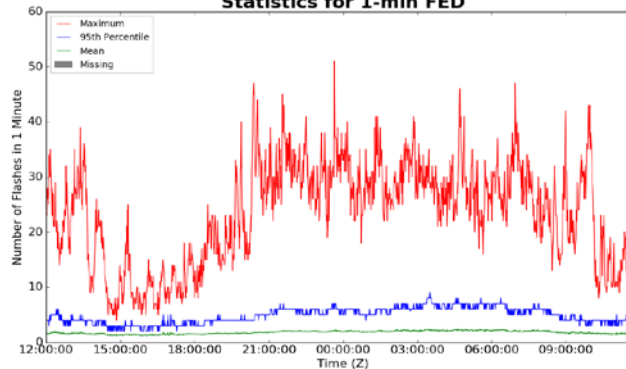
Max min-to-min increase: **31 flashes**

5-min/1-min Updating FED

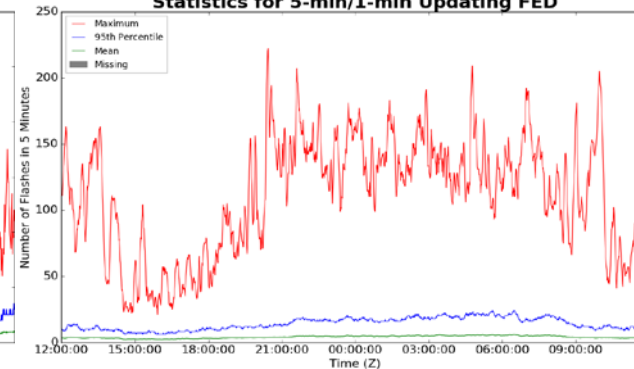
Max 5-min FED: **222 flashes/5min**

Max min-to-min increase: **51 flashes**

Statistics for 1-min FED



Statistics for 5-min/1-min Updating FED



Total Optical Energy and Average Flash Area Summary Statistics

5-min/1-min Updating TOE

Max 5-min TOE: **196.5 fJ**

Max min-to-min increase: **195.5 fJ**

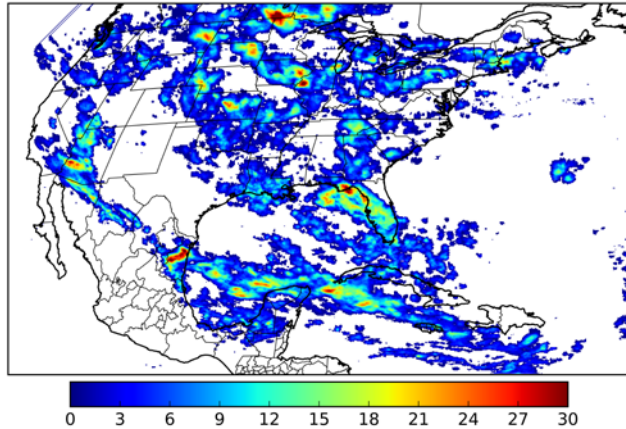
5-min/1-min Updating AFA

Max 5-min AFA: **9950.0 km²**

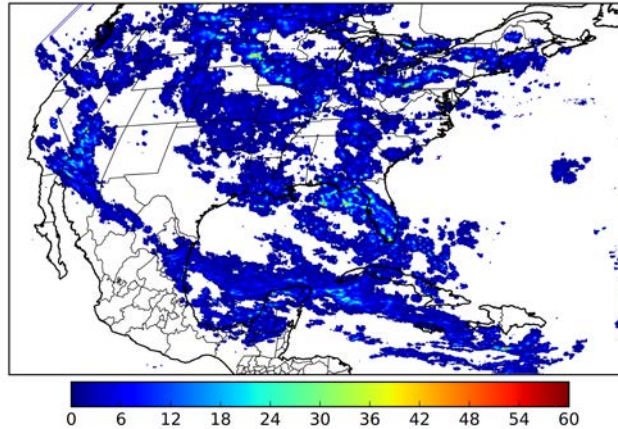
Max min-to-min increase: **7610.0 km²**

32.2% of grid cells detected lightning – **100.0%** of the day had GLM coverage – Duration of GLM outage(s): **0 minute(s)**

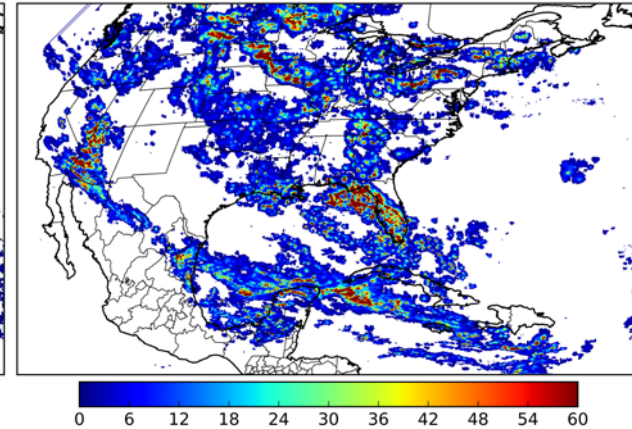
Fraction of the Day With Lightning (%)



Mean 5-min FED



Max 5-min FED



FED Summary Statistics

1-min FED

Max 1-min FED: **55 flashes/min**

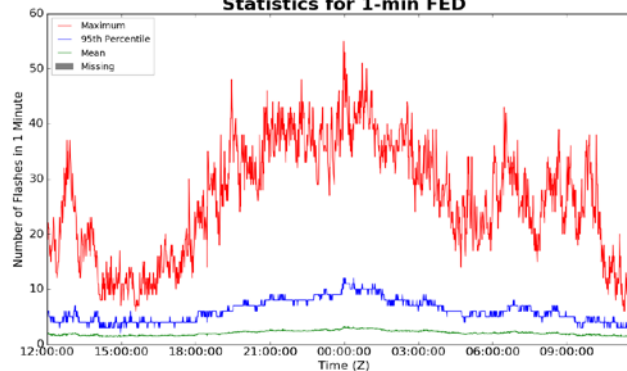
Max min-to-min increase: **23 flashes**

5-min/1-min Updating FED

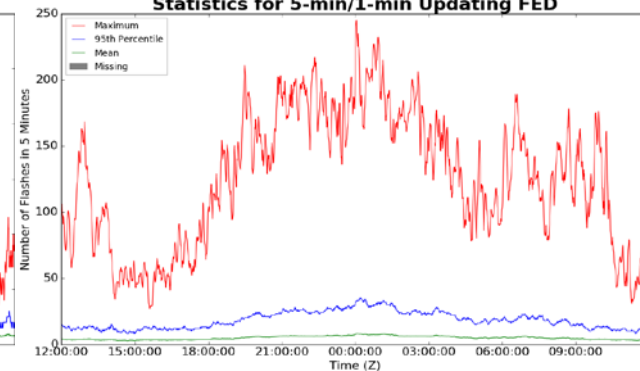
Max 5-min FED: **245 flashes/5min**

Max min-to-min increase: **36 flashes**

Statistics for 1-min FED



Statistics for 5-min/1-min Updating FED



Total Optical Energy and Average Flash Area Summary Statistics

5-min/1-min Updating TOE

Max 5-min TOE: **196.6 fJ**

Max min-to-min increase: **193.5 fJ**

5-min/1-min Updating AFA

Max 5-min AFA: **9726.0 km²**

Max min-to-min increase: **6844.0 km²**