



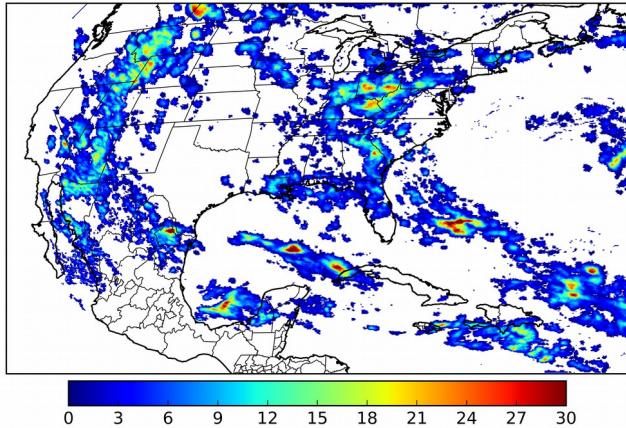
# Geostationary Lightning Mapper Gridded Products Daily Summary



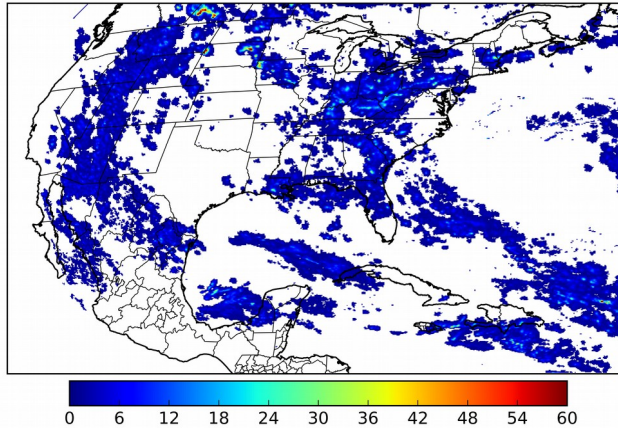
## Overall Summary Statistics for 1200Z-1200Z ending on 08/16/2018

**28.2%** of grid cells detected lightning - **100.0%** of the day had GLM coverage - Duration of GLM outage(s): **0 minute(s)**

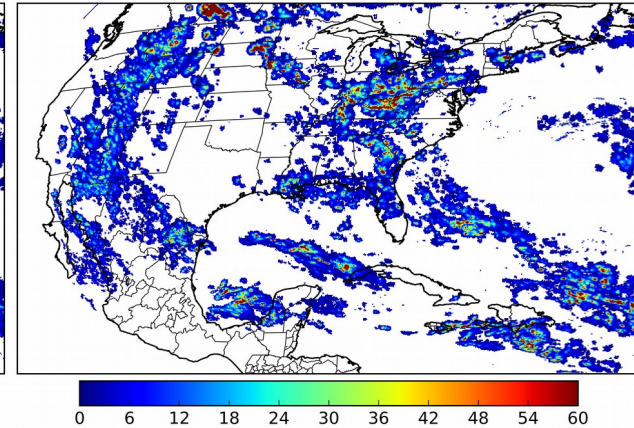
### Fraction of the Day With Lightning (%)



### Mean 5-min FED



### Max 5-min FED



### FED Summary Statistics

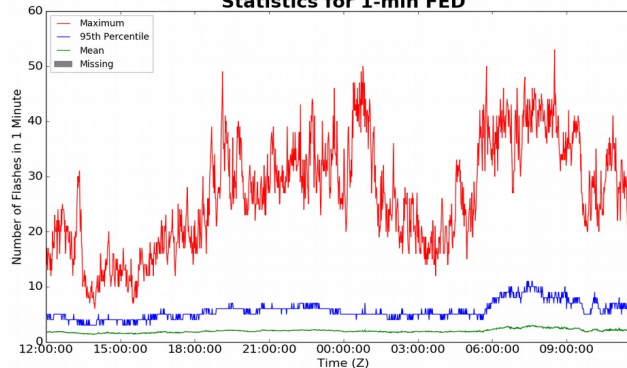
#### 1-min FED

Max 1-min FED: **53 flashes/min**  
Max min-to-min increase: **18 flashes**

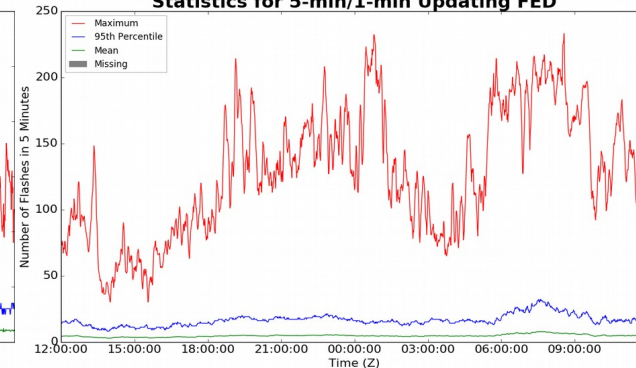
#### 5-min/1-min Updating FED

Max 5-min FED: **233 flashes/5min**  
Max min-to-min increase: **33 flashes**

#### Statistics for 1-min FED



#### Statistics for 5-min/1-min Updating FED



### Total Optical Energy and Average Flash Area Summary Statistics

#### 5-min/1-min Updating TOE

Max 5-min TOE: **196.6 fj**  
Max min-to-min increase: **195.8 fj**

#### 5-min/1-min Updating AFA

Max 5-min AFA: **9540.0 km<sup>2</sup>**  
Max min-to-min increase: **8454.0 km<sup>2</sup>**