



Geostationary Lightning Mapper Gridded Products Daily Summary



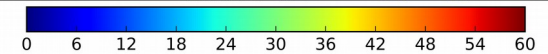
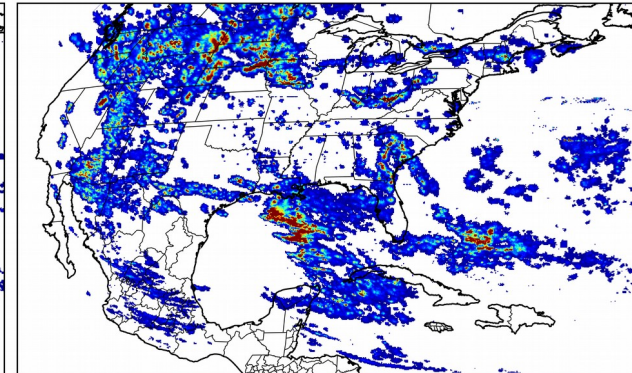
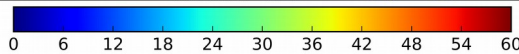
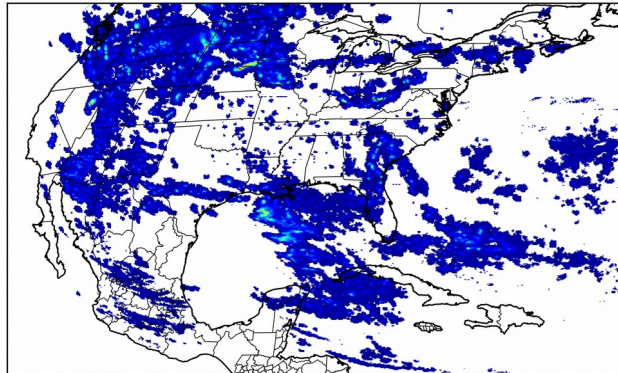
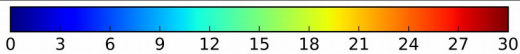
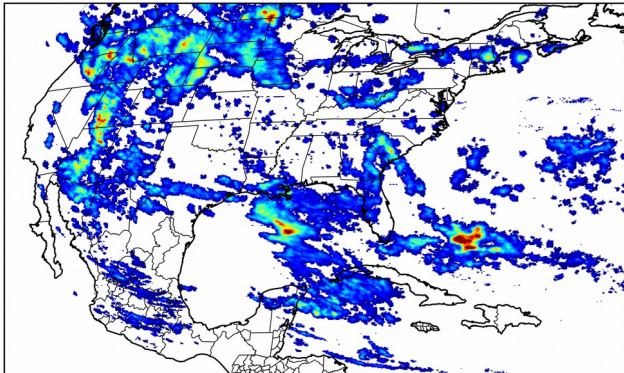
Overall Summary Statistics for 1200Z-1200Z ending on 08/21/2018

28.7% of grid cells detected lightning - **89.1%** of the day had GLM coverage - Duration of GLM outage(s): **157 minute(s)**

Fraction of the Day With Lightning (%)

Mean 5-min FED

Max 5-min FED



FED Summary Statistics

1-min FED

Max 1-min FED: **52 flashes/min**

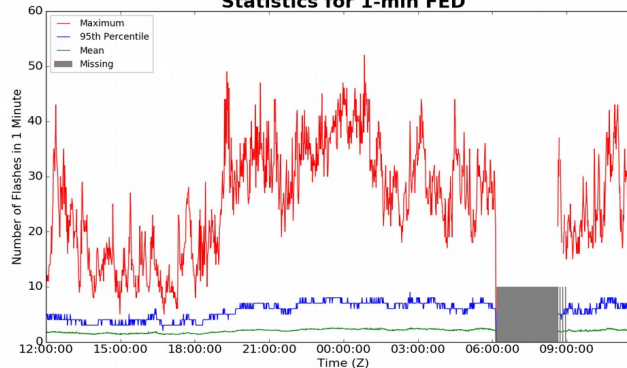
Max min-to-min increase: **20 flashes**

5-min/1-min Updating FED

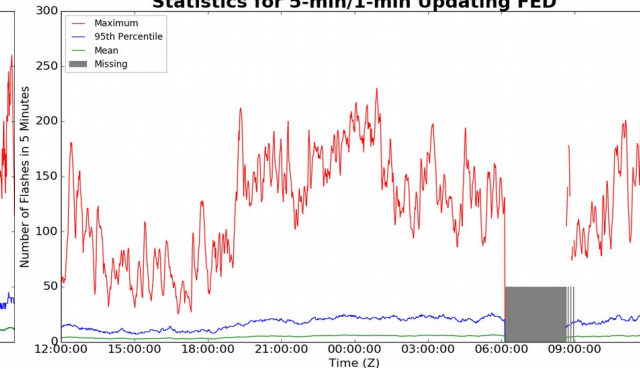
Max 5-min FED: **251 flashes/5min**

Max min-to-min increase: **104 flashes**

Statistics for 1-min FED



Statistics for 5-min/1-min Updating FED



Total Optical Energy and Average Flash Area Summary Statistics

5-min/1-min Updating TOE

Max 5-min TOE: **196.6 fj**

Max min-to-min increase: **192.7 fj**

5-min/1-min Updating AFA

Max 5-min AFA: **9946.0 km²**

Max min-to-min increase: **8948.0 km²**