



Geostationary Lightning Mapper Gridded Products Daily Summary



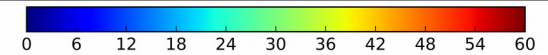
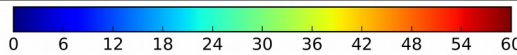
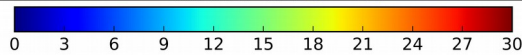
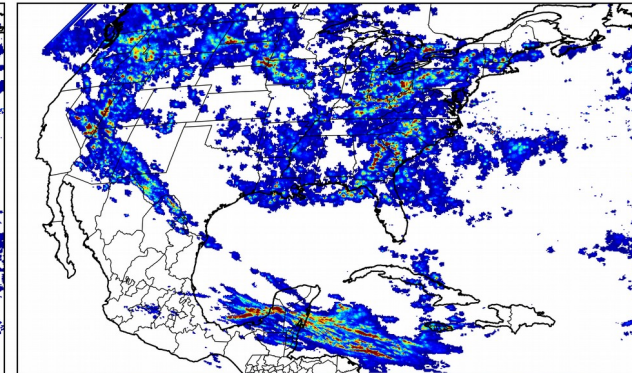
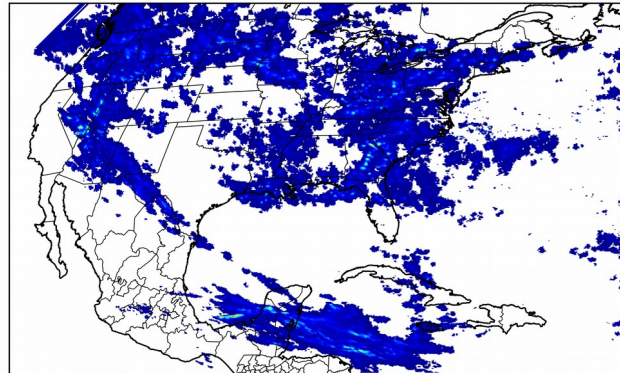
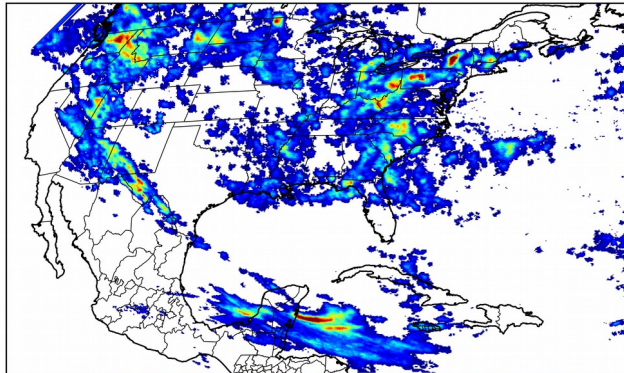
Overall Summary Statistics for 1200Z-1200Z ending on 08/28/2018

30.4% of grid cells detected lightning - **100.0%** of the day had GLM coverage - Duration of GLM outage(s): **0 minute(s)**

Fraction of the Day With Lightning (%)

Mean 5-min FED

Max 5-min FED



FED Summary Statistics

1-min FED

Max 1-min FED: **48 flashes/min**

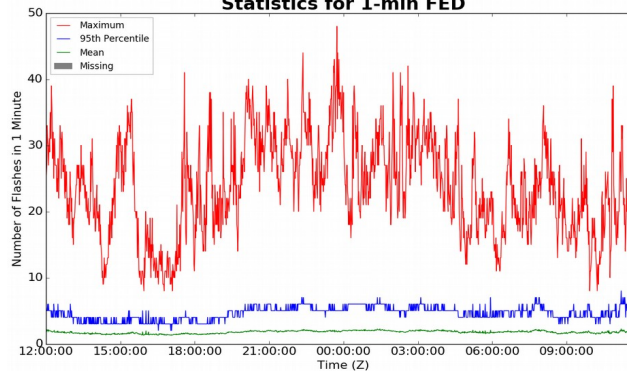
Max min-to-min increase: **21 flashes**

5-min/1-min Updating FED

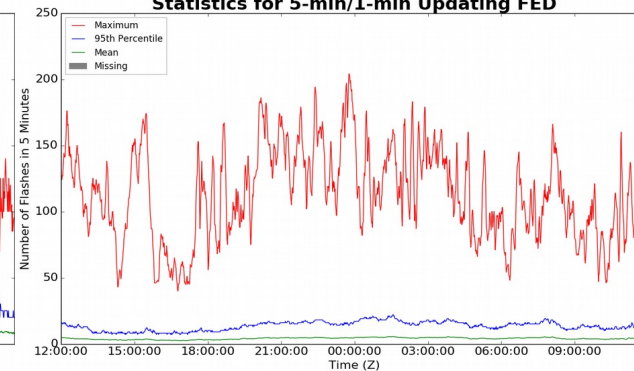
Max 5-min FED: **204 flashes/5min**

Max min-to-min increase: **33 flashes**

Statistics for 1-min FED



Statistics for 5-min/1-min Updating FED



Total Optical Energy and Average Flash Area Summary Statistics

5-min/1-min Updating TOE

Max 5-min TOE: **196.3 fj**

Max min-to-min increase: **188.2 fj**

5-min/1-min Updating AFA

Max 5-min AFA: **9506.0 km²**

Max min-to-min increase: **7690.0 km²**