



Geostationary Lightning Mapper Gridded Products Daily Summary



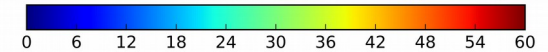
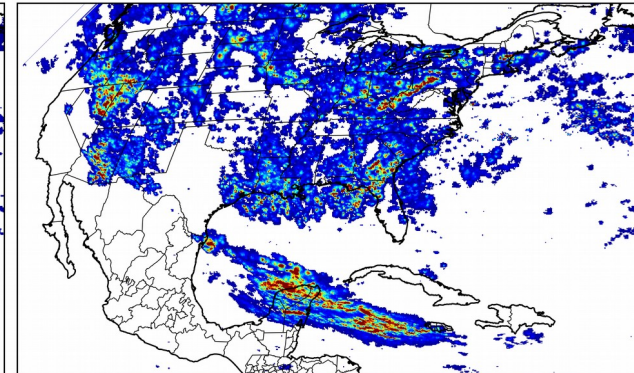
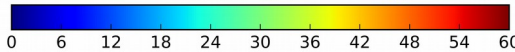
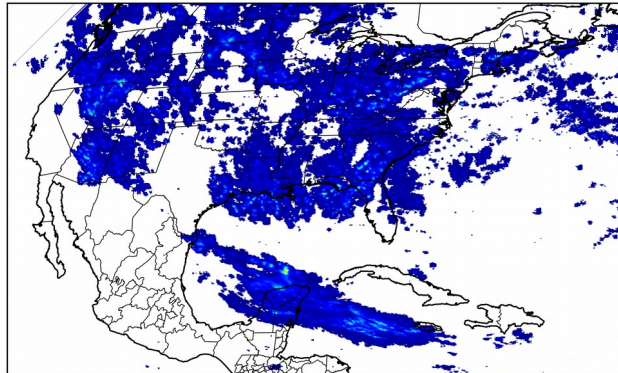
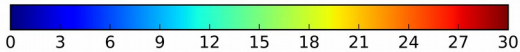
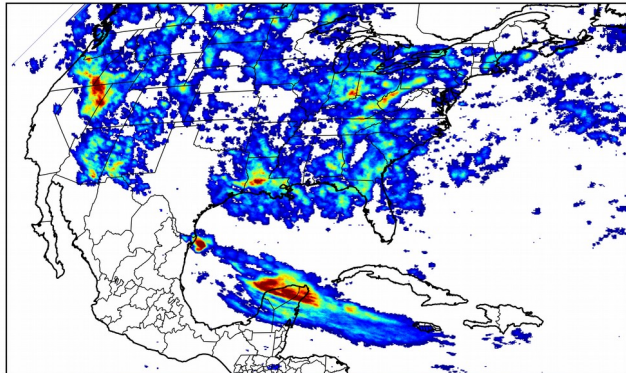
Overall Summary Statistics for 1200Z-1200Z ending on 08/29/2018

31.5% of grid cells detected lightning - **99.7%** of the day had GLM coverage - Duration of GLM outage(s): **4 minute(s)**

Fraction of the Day With Lightning (%)

Mean 5-min FED

Max 5-min FED



FED Summary Statistics

1-min FED

Max 1-min FED: **54 flashes/min**

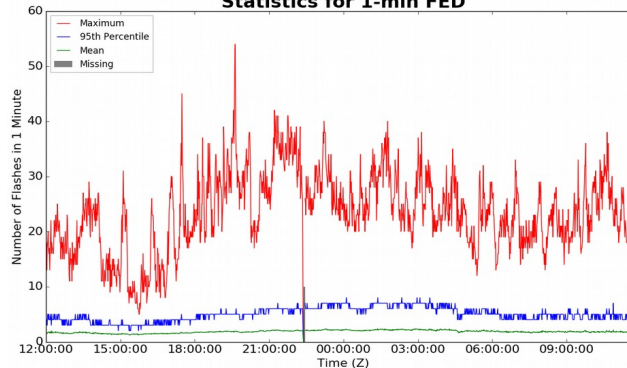
Max min-to-min increase: **23 flashes**

5-min/1-min Updating FED

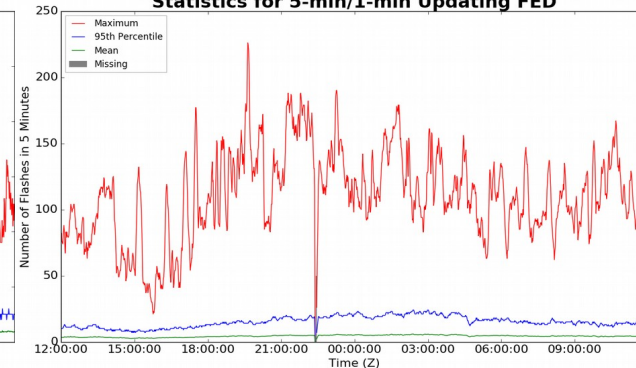
Max 5-min FED: **226 flashes/5min**

Max min-to-min increase: **39 flashes**

Statistics for 1-min FED



Statistics for 5-min/1-min Updating FED



Total Optical Energy and Average Flash Area Summary Statistics

5-min/1-min Updating TOE

Max 5-min TOE: **196.1 fj**

Max min-to-min increase: **190.9 fj**

5-min/1-min Updating AFA

Max 5-min AFA: **9428.0 km²**

Max min-to-min increase: **7076.0 km²**