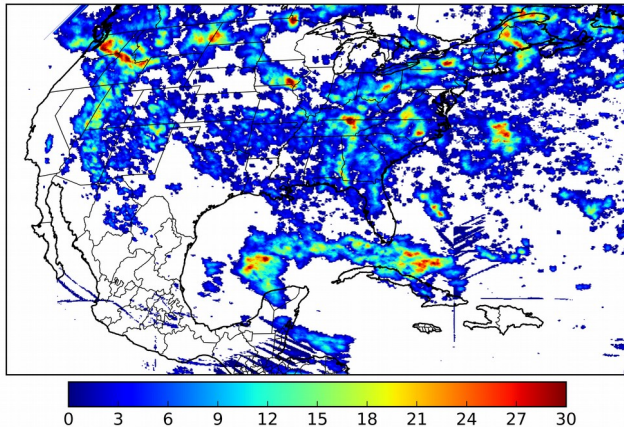
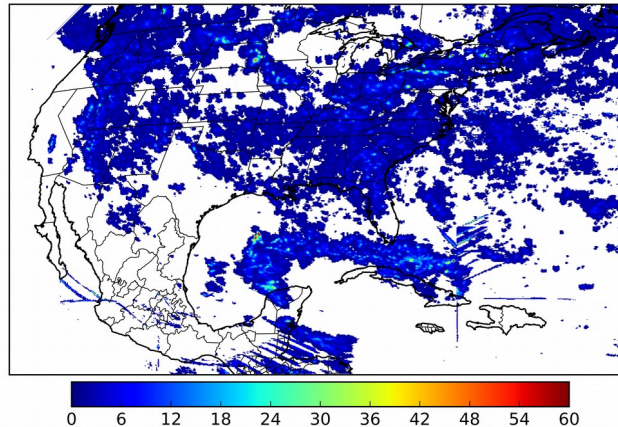


40.0% of grid cells detected lightning - **97.8%** of the day had GLM coverage - Duration of GLM outage(s): **31 minute(s)**

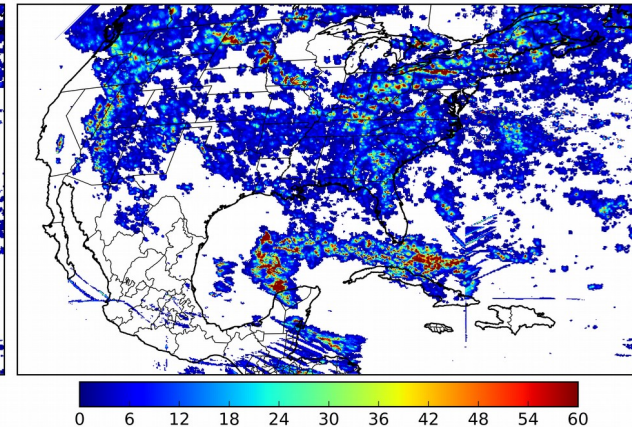
Fraction of the Day With Lightning (%)



Mean 5-min FED



Max 5-min FED



FED Summary Statistics

1-min FED

Max 1-min FED: **68 flashes/min**

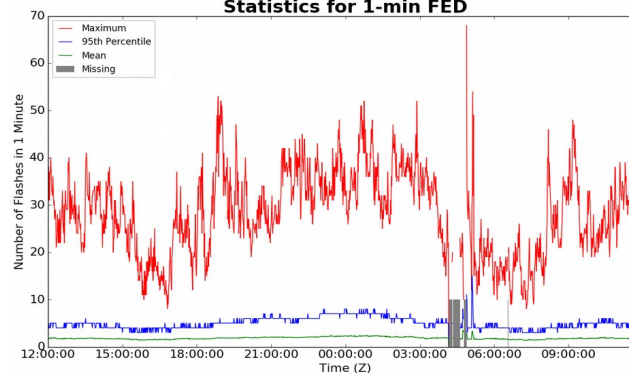
Max min-to-min increase: **24 flashes**

5-min/1-min Updating FED

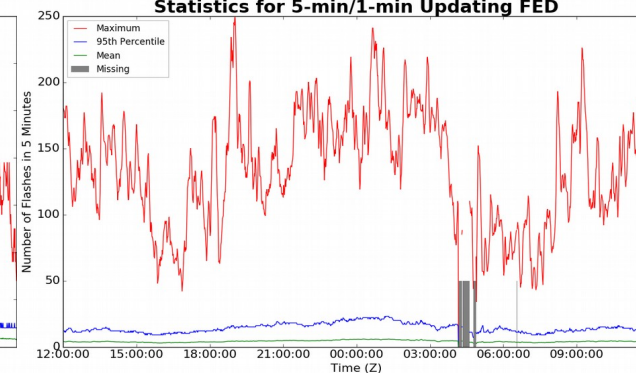
Max 5-min FED: **249 flashes/5min**

Max min-to-min increase: **104 flashes**

Statistics for 1-min FED



Statistics for 5-min/1-min Updating FED



Total Optical Energy and Average Flash Area Summary Statistics

5-min/1-min Updating TOE

Max 5-min TOE: **196.6 fj**

Max min-to-min increase: **190.5 fj**

5-min/1-min Updating AFA

Max 5-min AFA: **9942.0 km²**

Max min-to-min increase: **7834.0 km²**