



# Geostationary Lightning Mapper Gridded Products Daily Summary



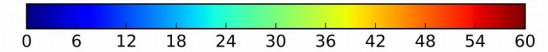
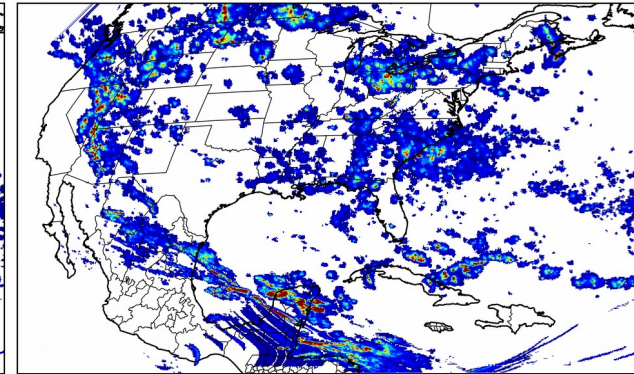
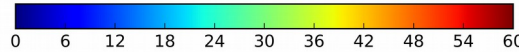
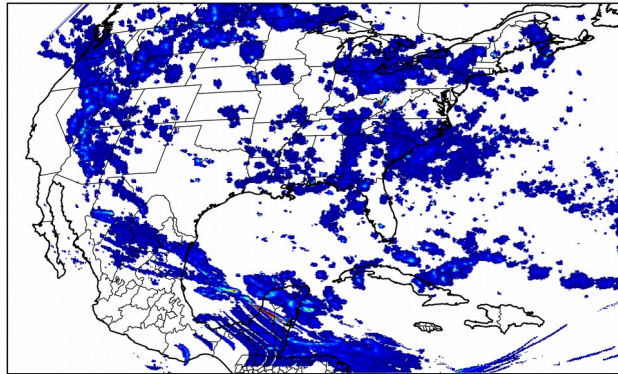
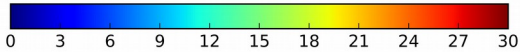
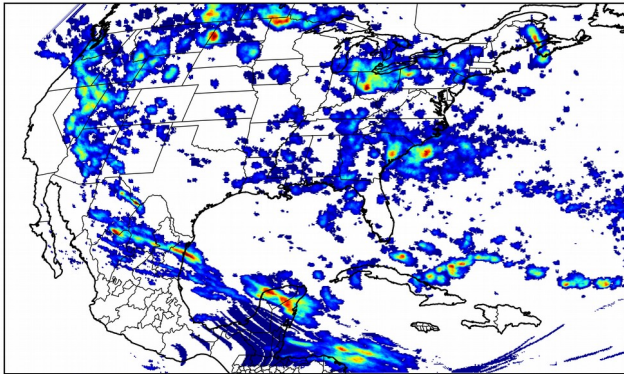
## Overall Summary Statistics for 1200Z-1200Z ending on 09/01/2018

**27.2%** of grid cells detected lightning - **50.3%** of the day had GLM coverage - Duration of GLM outage(s): **716 minute(s)**

### Fraction of the Day With Lightning (%)

### Mean 5-min FED

### Max 5-min FED



## FED Summary Statistics

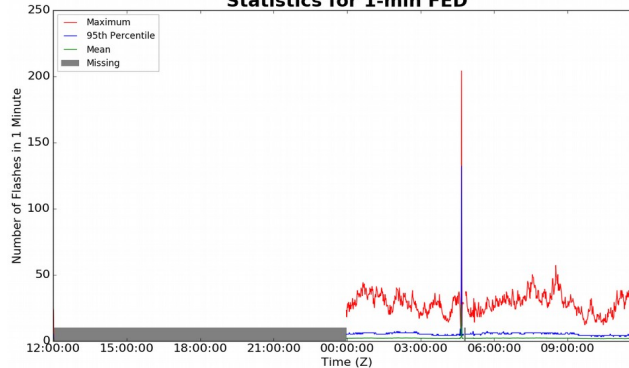
### 1-min FED

Max 1-min FED: **204 flashes/min**  
Max min-to-min increase: **199 flashes**

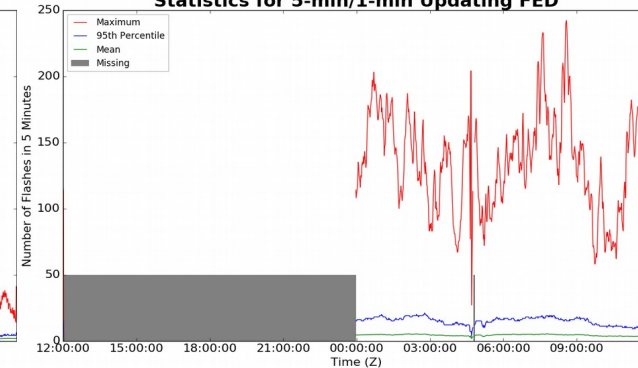
### 5-min/1-min Updating FED

Max 5-min FED: **304 flashes/5min**  
Max min-to-min increase: **248 flashes**

### Statistics for 1-min FED



### Statistics for 5-min/1-min Updating FED



## Total Optical Energy and Average Flash Area Summary Statistics

### 5-min/1-min Updating TOE

Max 5-min TOE: **196.6 fj**  
Max min-to-min increase: **196.4 fj**

### 5-min/1-min Updating AFA

Max 5-min AFA: **9992.0 km<sup>2</sup>**  
Max min-to-min increase: **8002.0 km<sup>2</sup>**