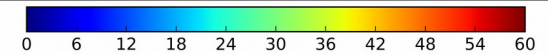
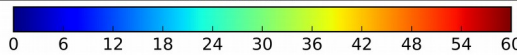
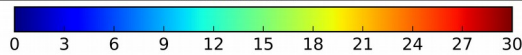
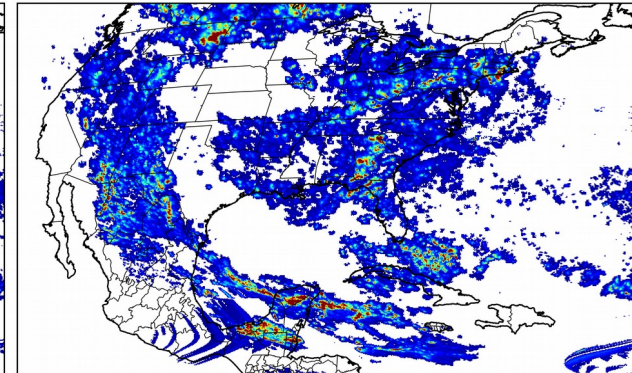
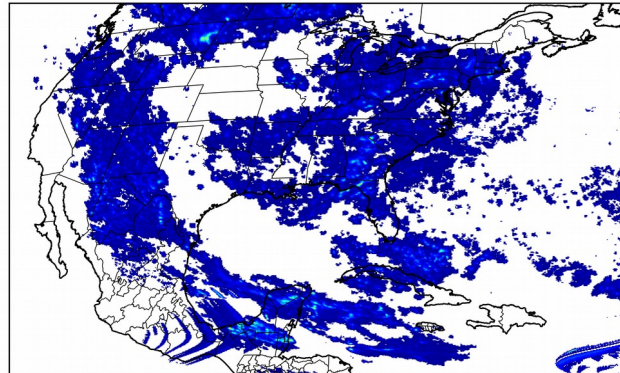
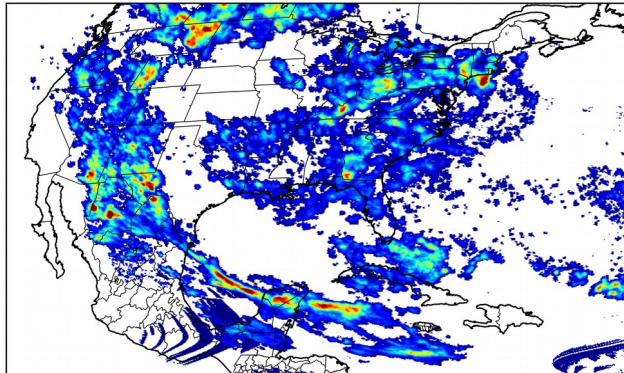


**37.5%** of grid cells detected lightning - **99.9%** of the day had GLM coverage - Duration of GLM outage(s): **2 minute(s)**

**Fraction of the Day With Lightning (%)**

**Mean 5-min FED**

**Max 5-min FED**



### FED Summary Statistics

#### **1-min FED**

Max 1-min FED: **46 flashes/min**

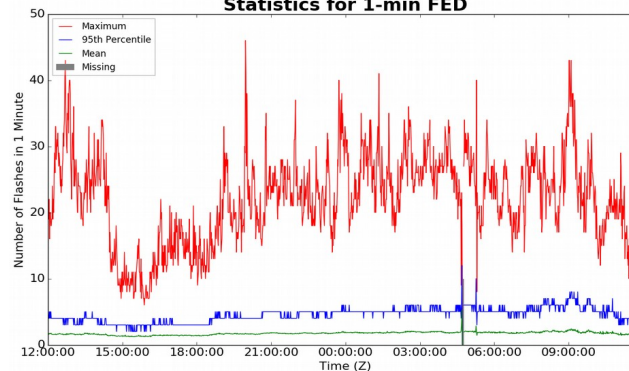
Max min-to-min increase: **17 flashes**

#### **5-min/1-min Updating FED**

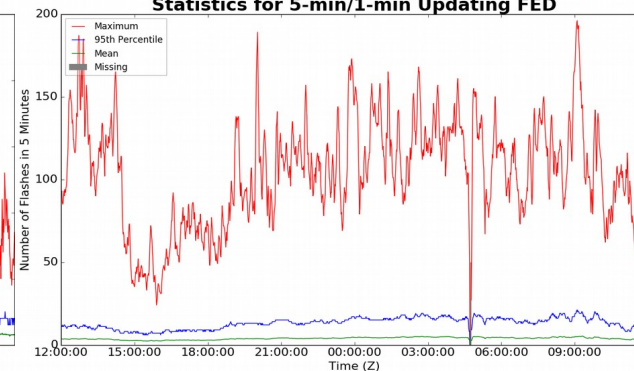
Max 5-min FED: **196 flashes/5min**

Max min-to-min increase: **47 flashes**

**Statistics for 1-min FED**



**Statistics for 5-min/1-min Updating FED**



### Total Optical Energy and Average Flash Area Summary Statistics

#### **5-min/1-min Updating TOE**

Max 5-min TOE: **196.6 fj**

Max min-to-min increase: **191.6 fj**

#### **5-min/1-min Updating AFA**

Max 5-min AFA: **9862.0 km<sup>2</sup>**

Max min-to-min increase: **7946.0 km<sup>2</sup>**