



# Geostationary Lightning Mapper Gridded Products Daily Summary



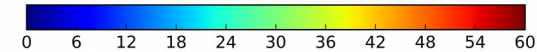
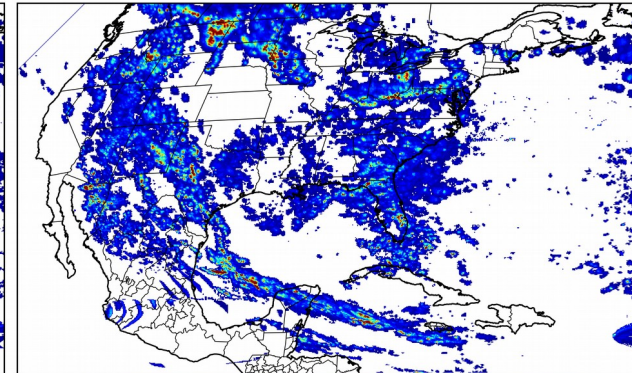
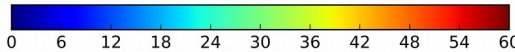
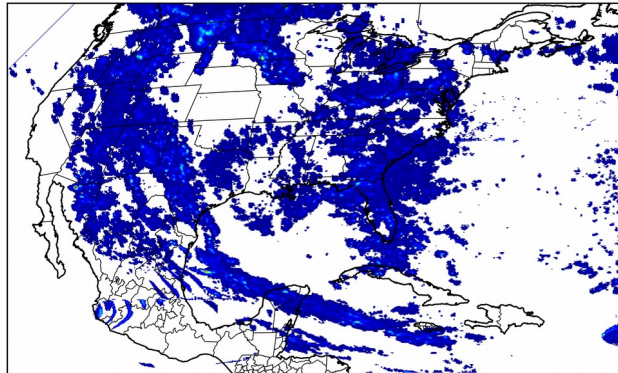
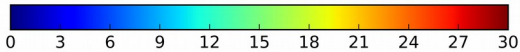
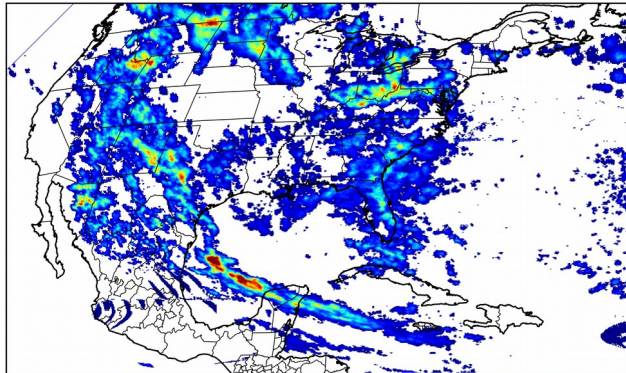
## Overall Summary Statistics for 1200Z-1200Z ending on 09/03/2018

**31.8%** of grid cells detected lightning - **99.9%** of the day had GLM coverage - Duration of GLM outage(s): **2 minute(s)**

### Fraction of the Day With Lightning (%)

### Mean 5-min FED

### Max 5-min FED



## FED Summary Statistics

### 1-min FED

Max 1-min FED: **44 flashes/min**

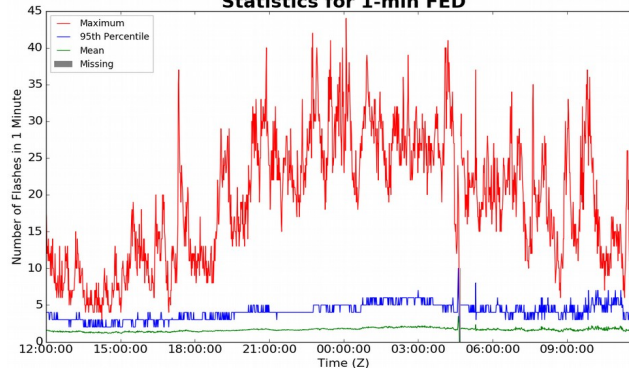
Max min-to-min increase: **19 flashes**

### 5-min/1-min Updating FED

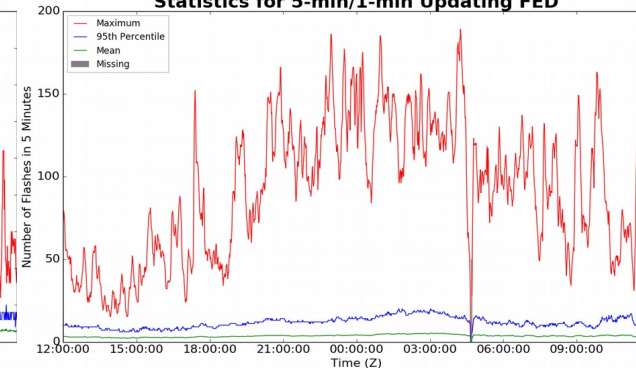
Max 5-min FED: **189 flashes/5min**

Max min-to-min increase: **36 flashes**

### Statistics for 1-min FED



### Statistics for 5-min/1-min Updating FED



## Total Optical Energy and Average Flash Area Summary Statistics

### 5-min/1-min Updating TOE

Max 5-min TOE: **196.5 fj**

Max min-to-min increase: **185.5 fj**

### 5-min/1-min Updating AFA

Max 5-min AFA: **9876.0 km<sup>2</sup>**

Max min-to-min increase: **8214.0 km<sup>2</sup>**