



Geostationary Lightning Mapper Gridded Products Daily Summary



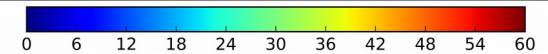
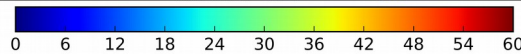
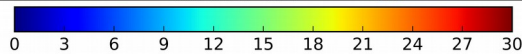
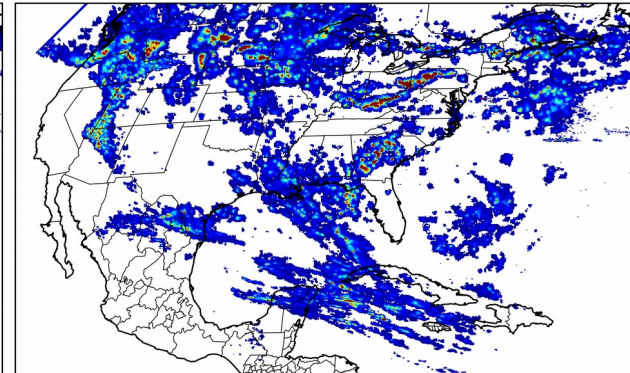
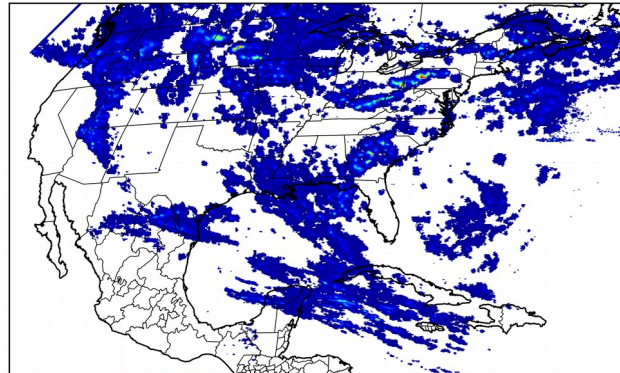
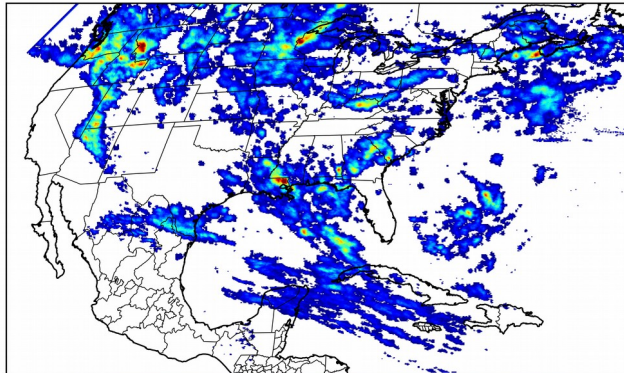
Overall Summary Statistics for 1200Z-1200Z ending on 09/26/2018

30.4% of grid cells detected lightning - **100.0%** of the day had GLM coverage - Duration of GLM outage(s): **0 minute(s)**

Fraction of the Day With Lightning (%)

Mean 5-min FED

Max 5-min FED



FED Summary Statistics

1-min FED

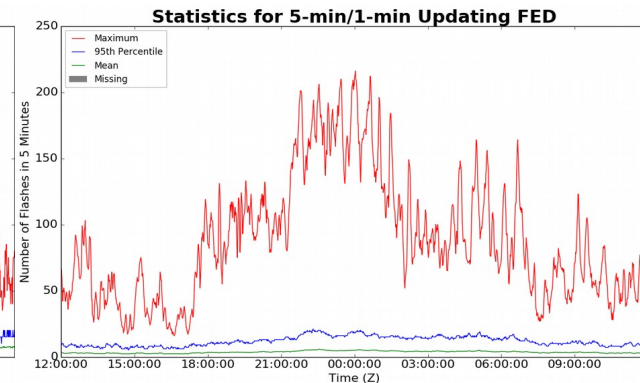
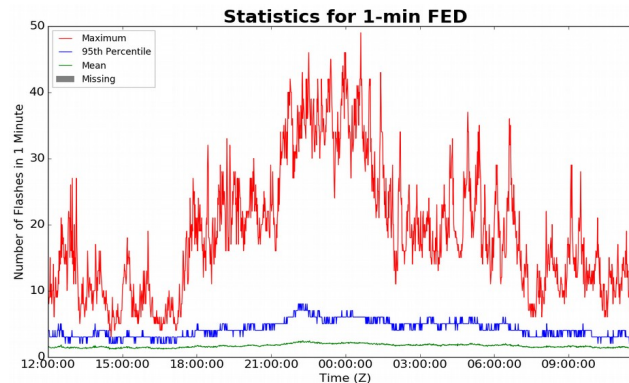
Max 1-min FED: **49 flashes/min**

Max min-to-min increase: **17 flashes**

5-min/1-min Updating FED

Max 5-min FED: **216 flashes/5min**

Max min-to-min increase: **32 flashes**



Total Optical Energy and Average Flash Area Summary Statistics

5-min/1-min Updating TOE

Max 5-min TOE: **196.0 fj**

Max min-to-min increase: **187.4 fj**

5-min/1-min Updating AFA

Max 5-min AFA: **9936.0 km²**

Max min-to-min increase: **7652.0 km²**