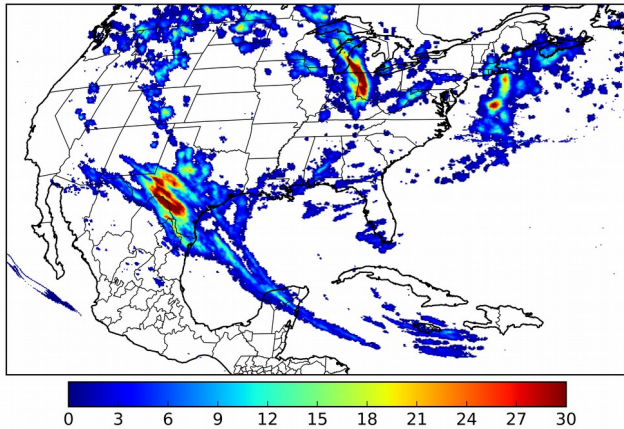


Geostationary Lightning Mapper Gridded Products Daily Summary

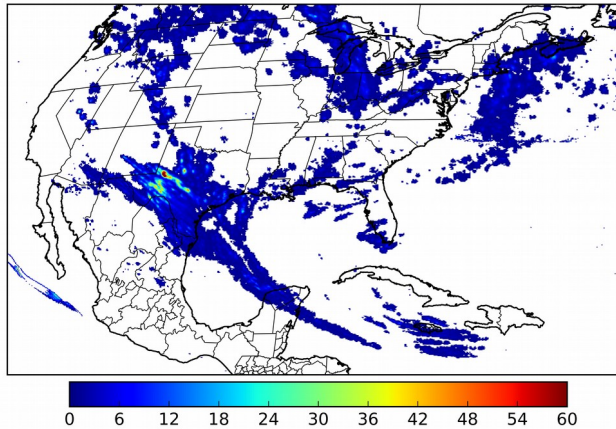
Overall Summary Statistics for 1200Z-1200Z ending on 10/09/2018

18.4% of grid cells detected lightning - **100.2%** of the day had GLM coverage - Duration of GLM outage(s): **-3 minute(s)**

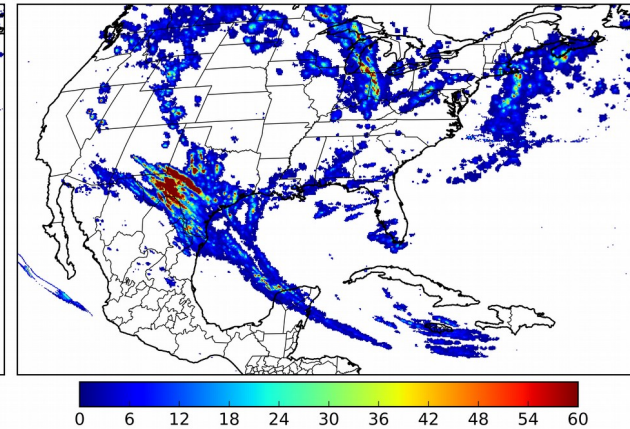
Fraction of the Day With Lightning (%)



Mean 5-min FED



Max 5-min FED



FED Summary Statistics

1-min FED

Max 1-min FED: **54 flashes/min**

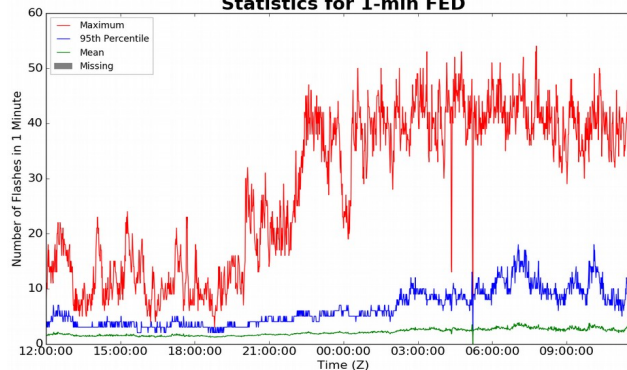
Max min-to-min increase: **29 flashes**

5-min/1-min Updating FED

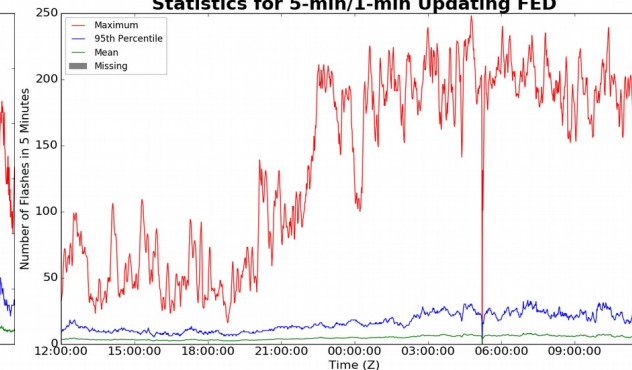
Max 5-min FED: **248 flashes/5min**

Max min-to-min increase: **48 flashes**

Statistics for 1-min FED



Statistics for 5-min/1-min Updating FED



Total Optical Energy and Average Flash Area Summary Statistics

5-min/1-min Updating TOE

Max 5-min TOE: **196.5 fj**

Max min-to-min increase: **192.6 fj**

5-min/1-min Updating AFA

Max 5-min AFA: **9746.0 km²**

Max min-to-min increase: **8504.0 km²**