



# Geostationary Lightning Mapper Gridded Products Daily Summary



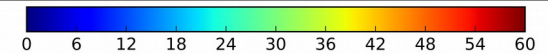
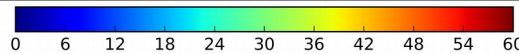
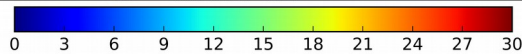
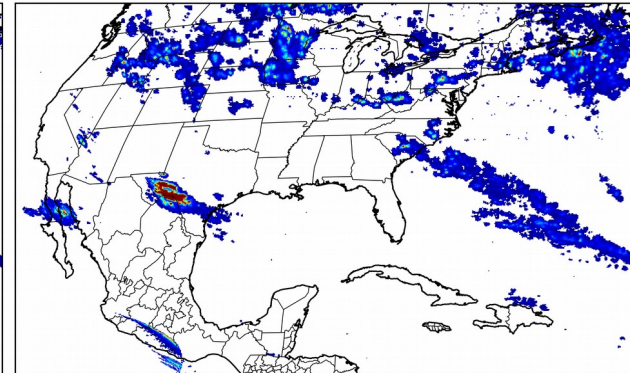
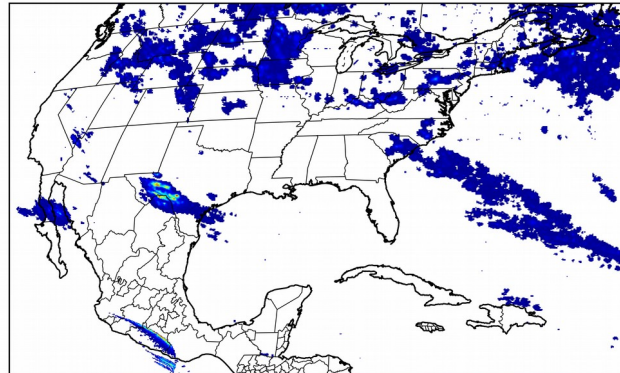
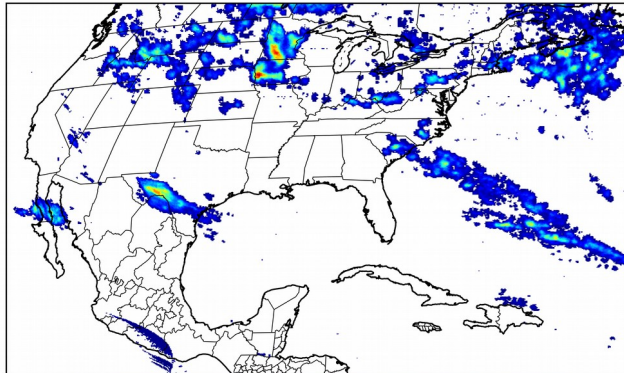
## Overall Summary Statistics for 1200Z-1200Z ending on 10/13/2018

**14.2%** of grid cells detected lightning - **99.4%** of the day had GLM coverage - Duration of GLM outage(s): **8 minute(s)**

### Fraction of the Day With Lightning (%)

### Mean 5-min FED

### Max 5-min FED



### FED Summary Statistics

#### 1-min FED

Max 1-min FED: **74 flashes/min**

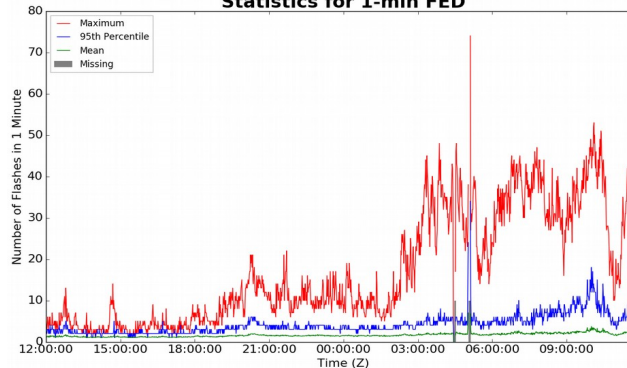
Max min-to-min increase: **29 flashes**

#### 5-min/1-min Updating FED

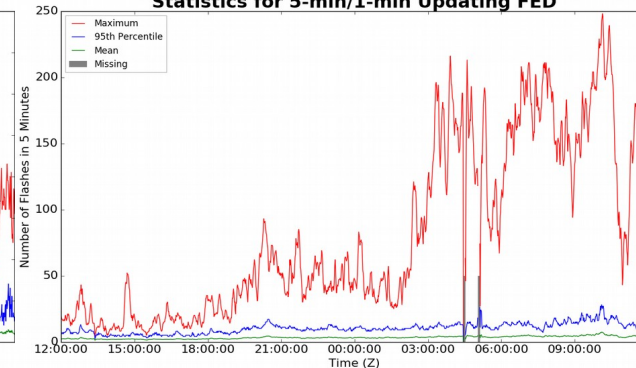
Max 5-min FED: **248 flashes/5min**

Max min-to-min increase: **65 flashes**

### Statistics for 1-min FED



### Statistics for 5-min/1-min Updating FED



### Total Optical Energy and Average Flash Area Summary Statistics

#### 5-min/1-min Updating TOE

Max 5-min TOE: **196.6 fj**

Max min-to-min increase: **195.1 fj**

#### 5-min/1-min Updating AFA

Max 5-min AFA: **9914.0 km<sup>2</sup>**

Max min-to-min increase: **8268.0 km<sup>2</sup>**