



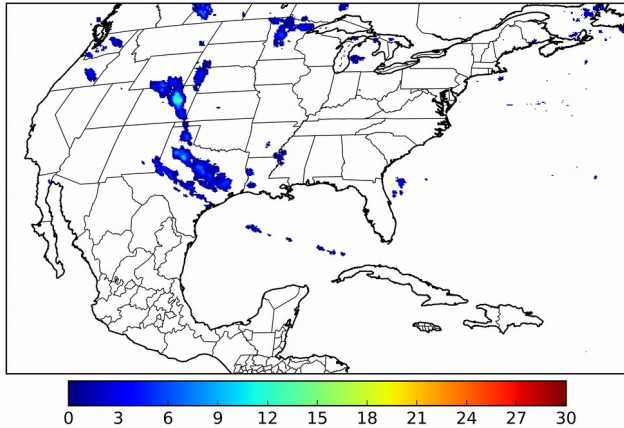
Geostationary Lightning Mapper Gridded Products Daily Summary



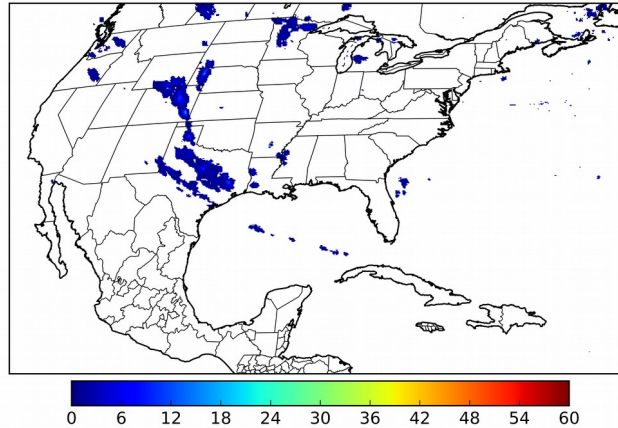
Overall Summary Statistics for 1200Z-1200Z ending on 10/16/2018

2.3% of grid cells detected lightning - **18.5%** of the day had GLM coverage - Duration of GLM outage(s): **1173 minutes(s)**

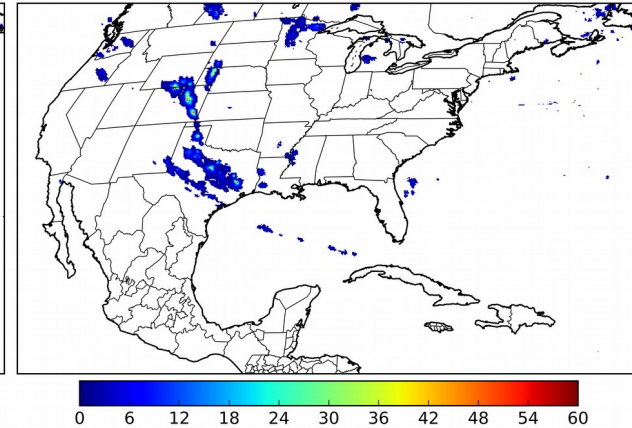
Fraction of the Day With Lightning (%)



Mean 5-min FED



Max 5-min FED



FED Summary Statistics

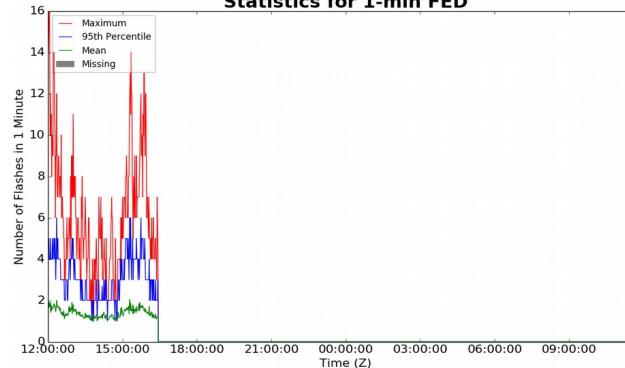
1-min FED

Max 1-min FED: **16 flashes/min**
Max min-to-min increase: **7 flashes**

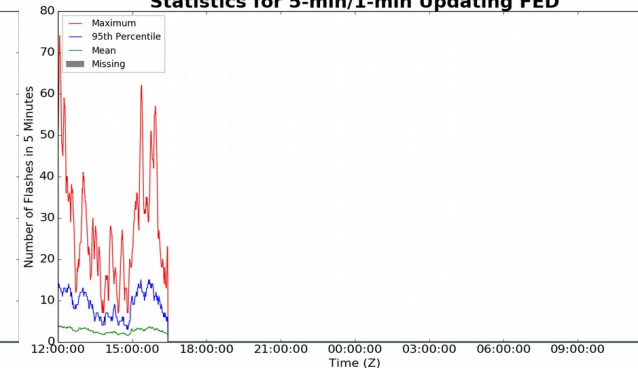
5-min/1-min Updating FED

Max 5-min FED: **74 flashes/5min**
Max min-to-min increase: **11 flashes**

Statistics for 1-min FED



Statistics for 5-min/1-min Updating FED



Total Optical Energy and Average Flash Area Summary Statistics

5-min/1-min Updating TOE

Max 5-min TOE: **63.1 fj**
Max min-to-min increase: **21.4 fj**

5-min/1-min Updating AFA

Max 5-min AFA: **8490.0 km^2**
Max min-to-min increase: **8068.0 km^2**