



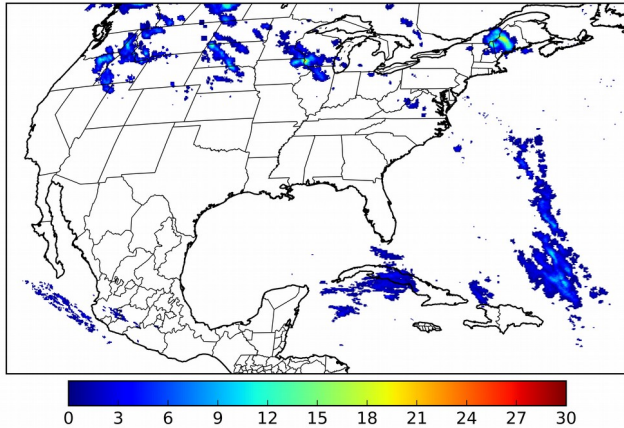
# Geostationary Lightning Mapper Gridded Products Daily Summary



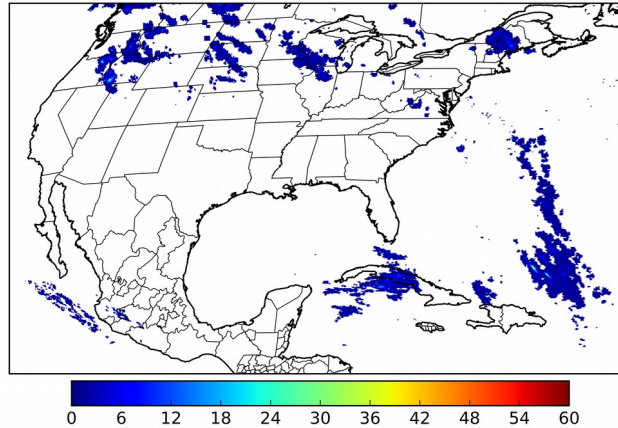
## Overall Summary Statistics for 1200Z-1200Z ending on 10/29/2018

**6.1%** of grid cells detected lightning - **100.0%** of the day had GLM coverage - Duration of GLM outage(s): **0 minute(s)**

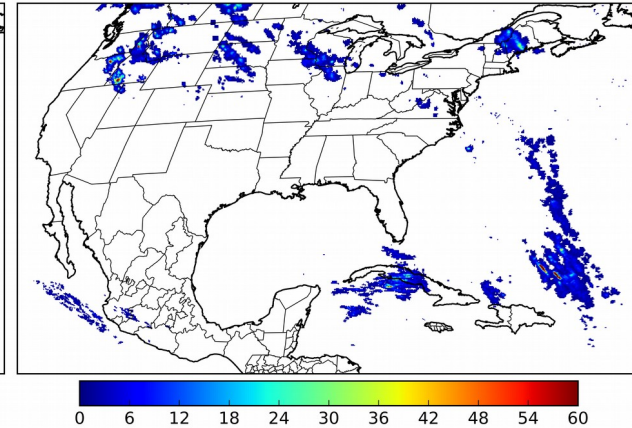
### Fraction of the Day With Lightning (%)



### Mean 5-min FED



### Max 5-min FED



### FED Summary Statistics

#### 1-min FED

Max 1-min FED: **37 flashes/min**

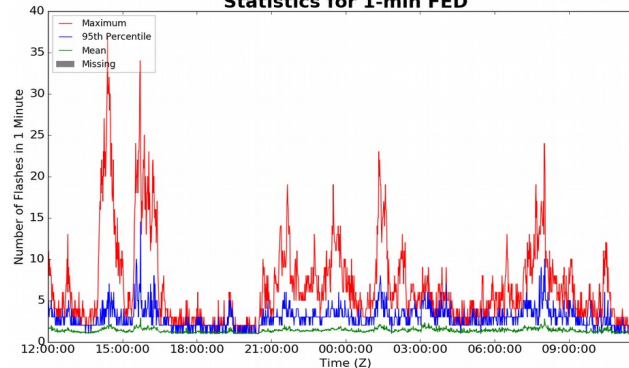
Max min-to-min increase: **11 flashes**

#### 5-min/1-min Updating FED

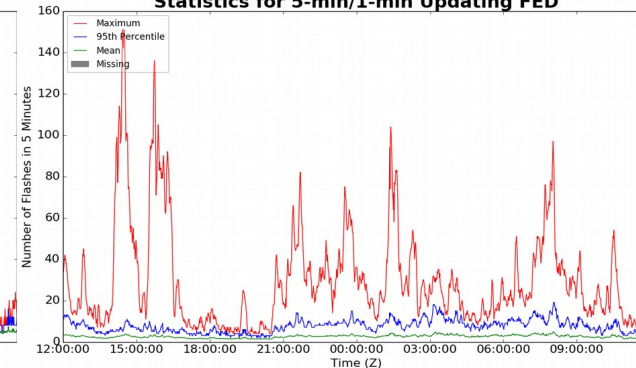
Max 5-min FED: **151 flashes/5min**

Max min-to-min increase: **29 flashes**

### Statistics for 1-min FED



### Statistics for 5-min/1-min Updating FED



### Total Optical Energy and Average Flash Area Summary Statistics

#### 5-min/1-min Updating TOE

Max 5-min TOE:

Max min-to-min increase:

#### 5-min/1-min Updating AFA

Max 5-min AFA:

Max min-to-min increase: