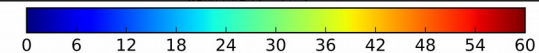
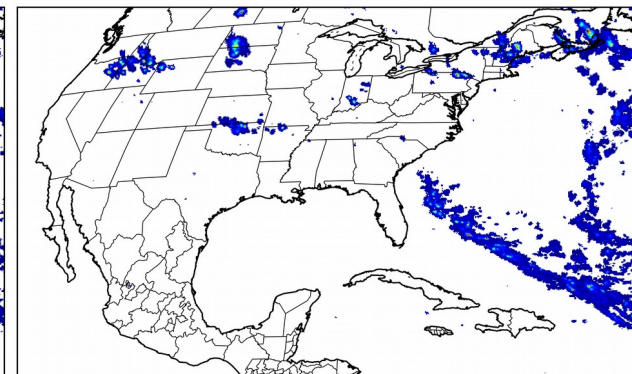
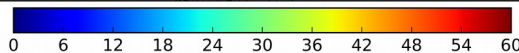
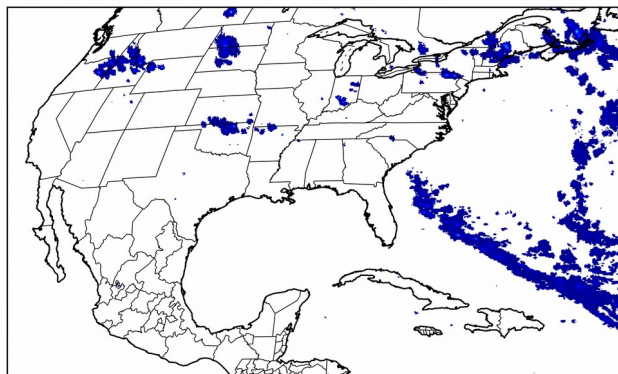
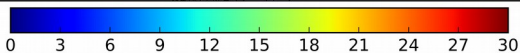
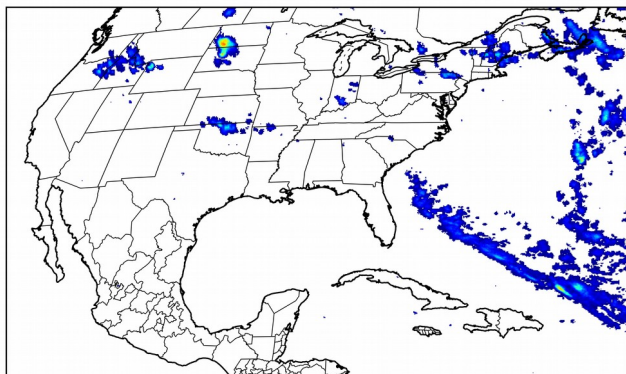


6.9% of grid cells detected lightning - 100.0% of the day had GLM coverage - Duration of GLM outage(s): 0 minute(s)

Fraction of the Day With Lightning (%)

Mean 5-min FED

Max 5-min FED



## FED Summary Statistics

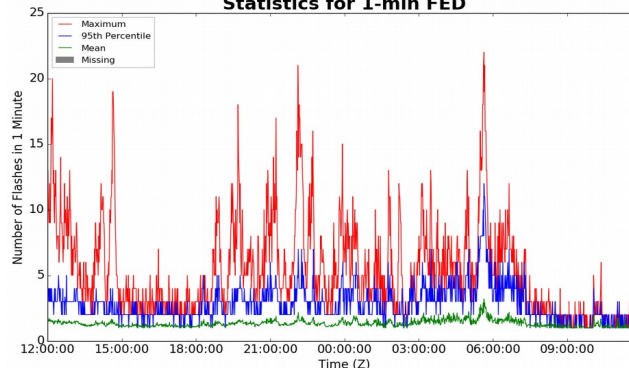
### 1-min FED

Max 1-min FED: 22 flashes/min  
Max min-to-min increase: 10 flashes

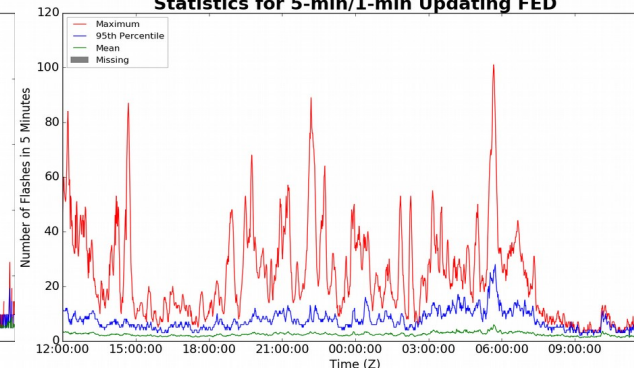
### 5-min/1-min Updating FED

Max 5-min FED: 101 flashes/5min  
Max min-to-min increase: 21 flashes

Statistics for 1-min FED



Statistics for 5-min/1-min Updating FED



## Total Optical Energy and Average Flash Area Summary Statistics

### 5-min/1-min Updating TOE

Max 5-min TOE:  
Max min-to-min increase:

### 5-min/1-min Updating AFA

Max 5-min AFA:  
Max min-to-min increase: