

4.0%

of grid cells detected lightning -

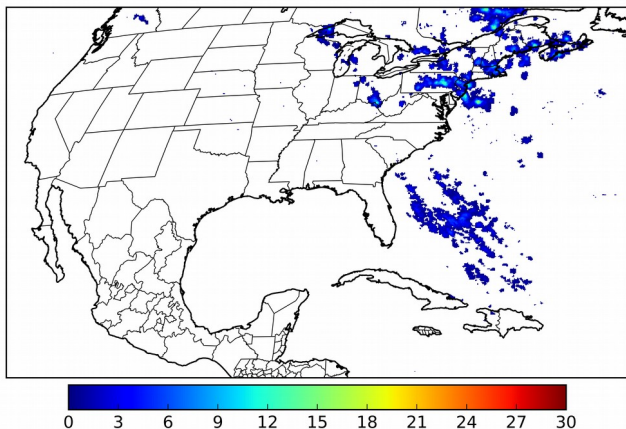
99.9%

of the day had GLM coverage -

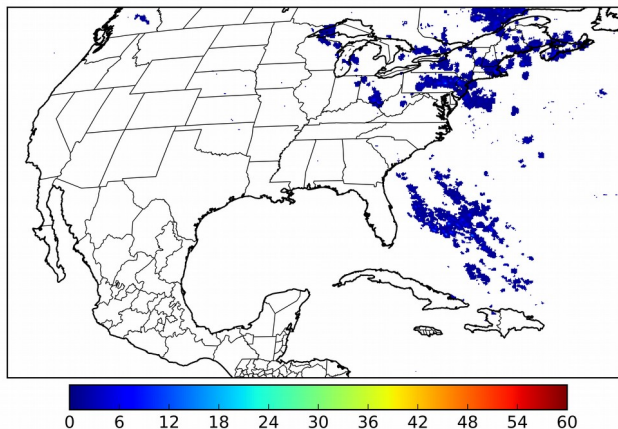
Duration of GLM outage(s):

1 minute(s)

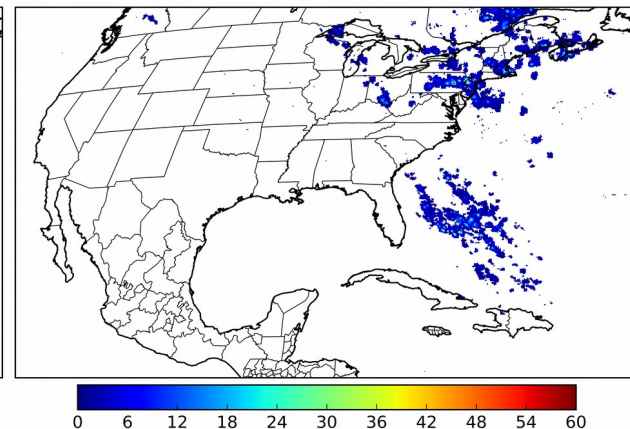
Fraction of the Day With Lightning (%)



Mean 5-min FED



Max 5-min FED



FED Summary Statistics

1-min FED

Max 1-min FED: 23 flashes/min

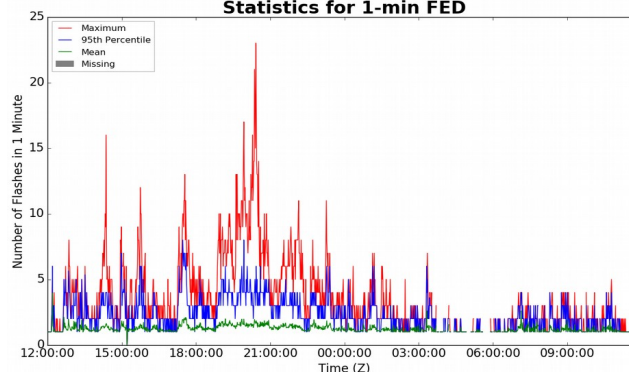
Max min-to-min increase: 8 flashes

5-min/1-min Updating FED

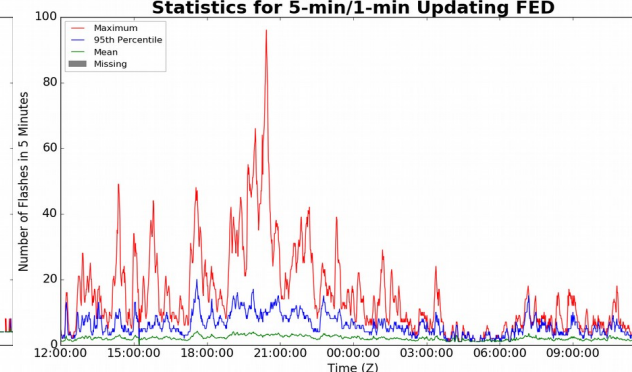
Max 5-min FED: 96 flashes/5min

Max min-to-min increase: 14 flashes

Statistics for 1-min FED



Statistics for 5-min/1-min Updating FED



Total Optical Energy and Average Flash Area Summary Statistics

5-min/1-min Updating TOE

Max 5-min TOE:

Max min-to-min increase:

5-min/1-min Updating AFA

Max 5-min AFA:

Max min-to-min increase: