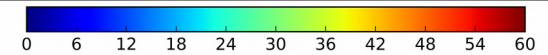
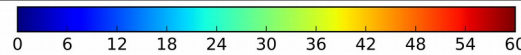
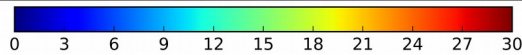
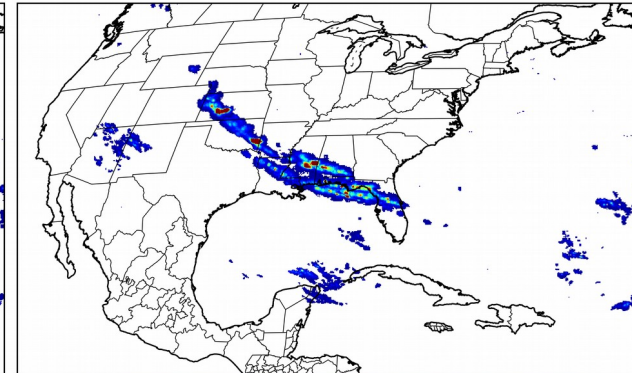
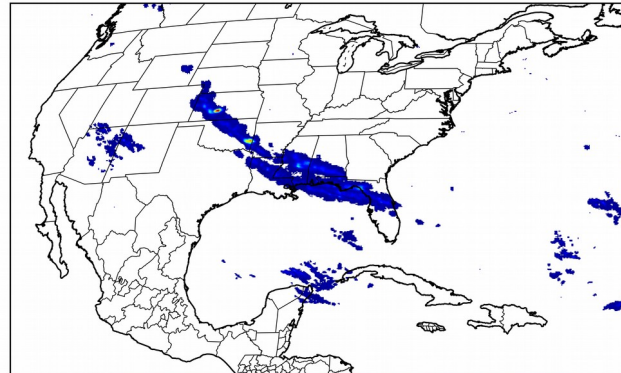
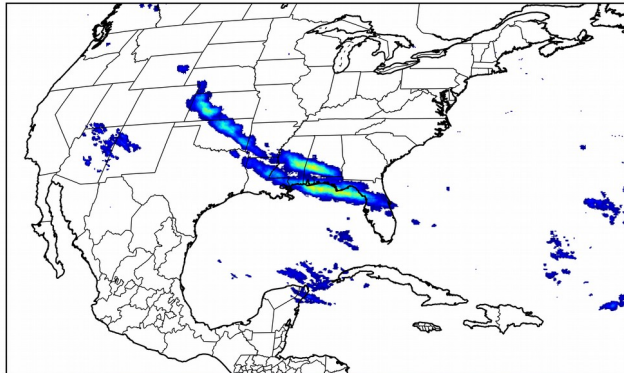


4.0% of grid cells detected lightning - 100.0% of the day had GLM coverage - Duration of GLM outage(s): 0 minute(s)

**Fraction of the Day With Lightning (%)**

**Mean 5-min FED**

**Max 5-min FED**



### FED Summary Statistics

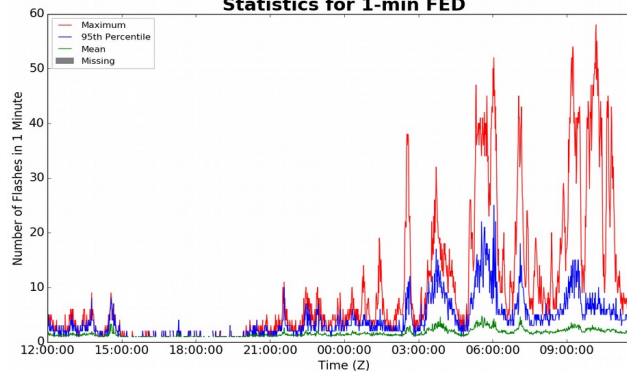
#### 1-min FED

Max 1-min FED: **58 flashes/min**  
Max min-to-min increase: **17 flashes**

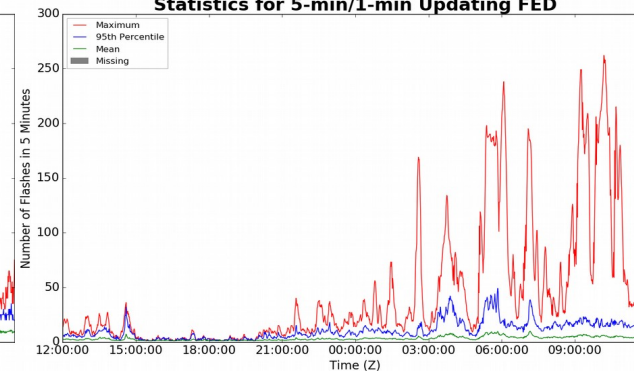
#### 5-min/1-min Updating FED

Max 5-min FED: **262 flashes/5min**  
Max min-to-min increase: **66 flashes**

**Statistics for 1-min FED**



**Statistics for 5-min/1-min Updating FED**



### Total Optical Energy and Average Flash Area Summary Statistics

#### 5-min/1-min Updating TOE

Max 5-min TOE:  
Max min-to-min increase:

#### 5-min/1-min Updating AFA

Max 5-min AFA:  
Max min-to-min increase: