



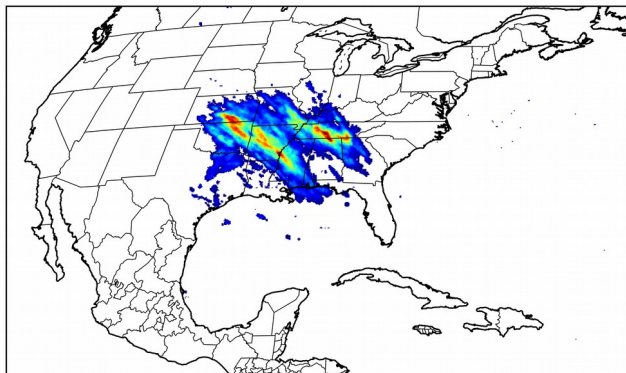
Geostationary Lightning Mapper Gridded Products Daily Summary



Overall Summary Statistics for 1200Z-1200Z ending on 12/20/2018

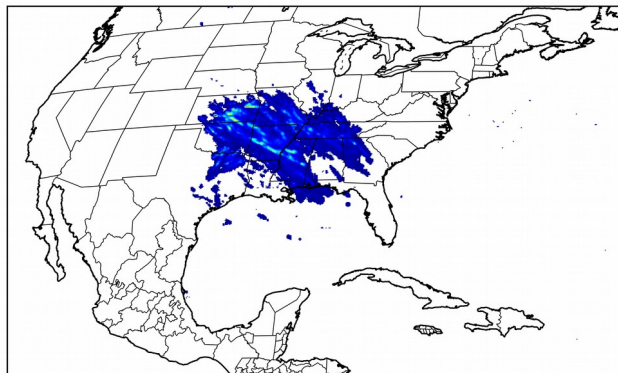
5.2% of grid cells detected lightning - **100.0%** of the day had GLM coverage - Duration of GLM outage(s): **0 minute(s)**

Fraction of the Day With Lightning (%)



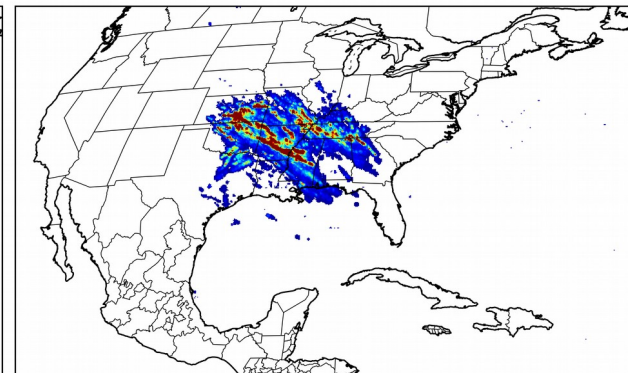
0 3 6 9 12 15 18 21 24 27 30

Mean 5-min FED



0 6 12 18 24 30 36 42 48 54 60

Max 5-min FED



0 6 12 18 24 30 36 42 48 54 60

FED Summary Statistics

1-min FED

Max 1-min FED: **65 flashes/min**

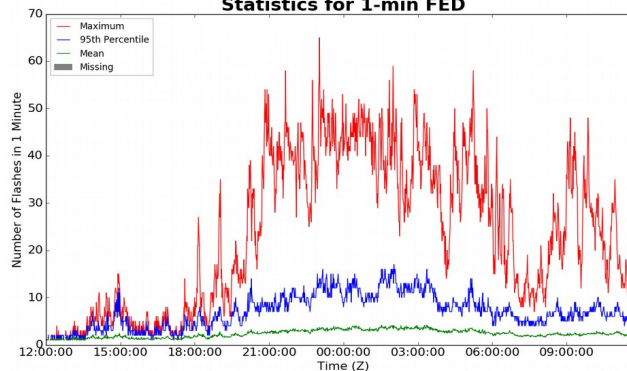
Max min-to-min increase: **21 flashes**

5-min/1-min Updating FED

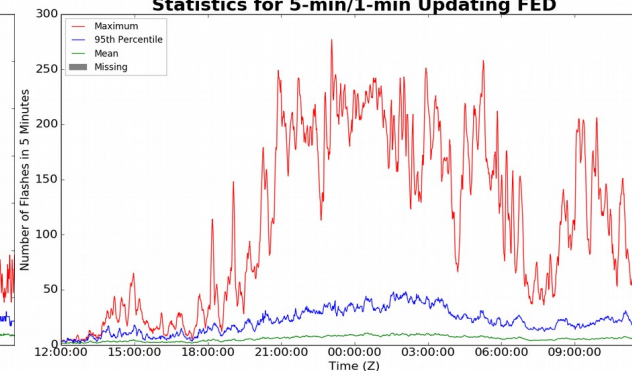
Max 5-min FED: **277 flashes/5min**

Max min-to-min increase: **45 flashes**

Statistics for 1-min FED



Statistics for 5-min/1-min Updating FED



Total Optical Energy and Average Flash Area Summary Statistics

5-min/1-min Updating TOE

Max 5-min TOE:

Max min-to-min increase:

5-min/1-min Updating AFA

Max 5-min AFA:

Max min-to-min increase: