



# Geostationary Lightning Mapper Gridded Products Daily Summary

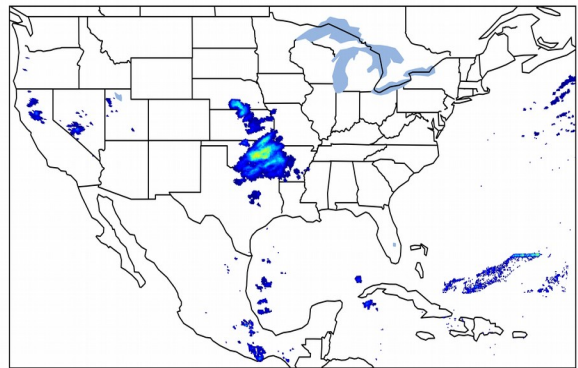


Overall Summary Statistics for 1200Z-1200Z ending on

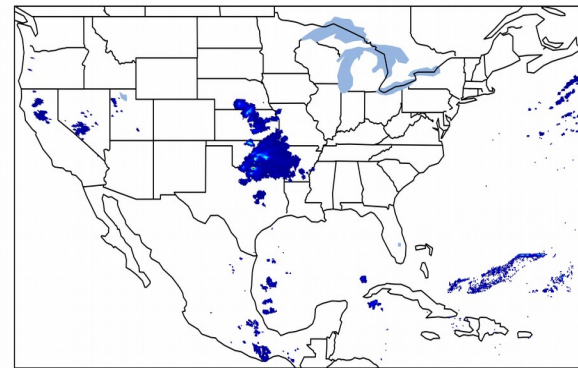
03/24/2019

2.5% of grid cells detected lightning - 99.1% of the day had GLM coverage - Duration of GLM outage(s): 13 minute(s)

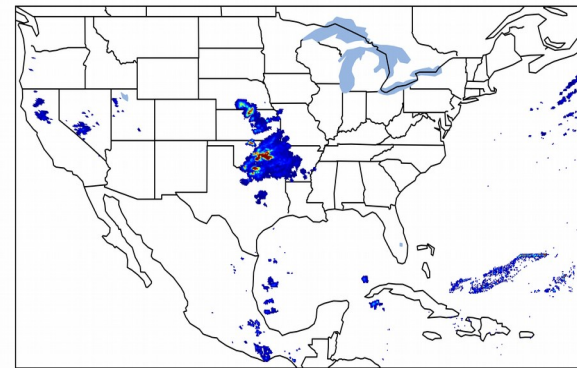
### Fraction of the Day With Lightning (%)



### Mean 5-min FED



### Max 5-min FED



## FED Summary Statistics

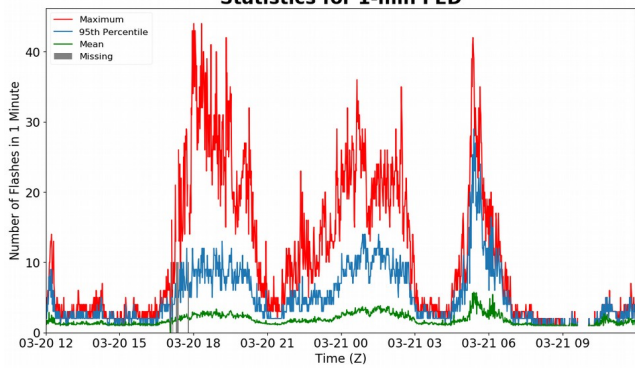
### 1-min FED

Max 1-min FED: 44 flashes/min  
Max min-to-min increase: 27 flashes

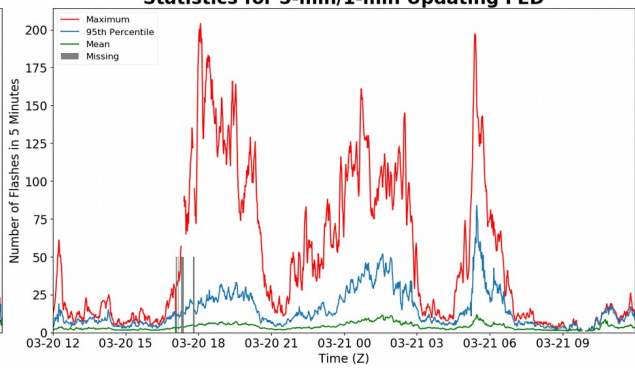
### 5-min/1-min Updating FED

Max 5-min FED: 204 flashes/5min  
Max min-to-min increase: 32 flashes

### Statistics for 1-min FED



### Statistics for 5-min/1-min Updating FED



## Total Optical Energy and Average Flash Area Summary Statistics

### 5-min/1-min Updating TOE

Max 5-min TOE:  
Max min-to-min increase:

### 5-min/1-min Updating AFA

Max 5-min AFA:  
Max min-to-min increase: