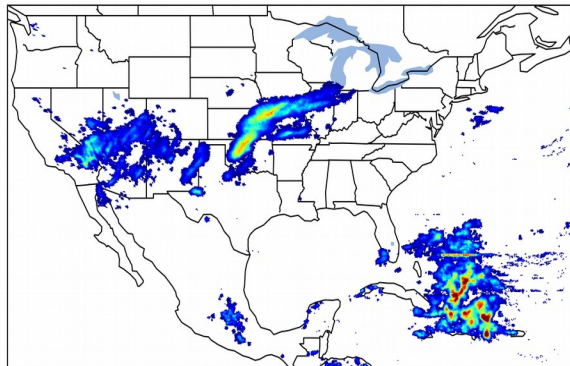
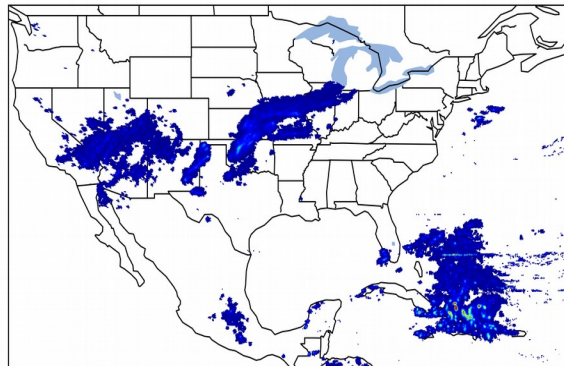


**10.8%** of grid cells detected lightning - **99.9%** of the day had GLM coverage - Duration of GLM outage(s): **2 minute(s)**

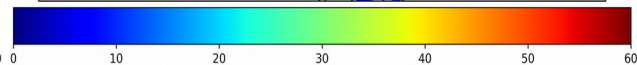
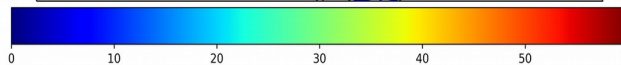
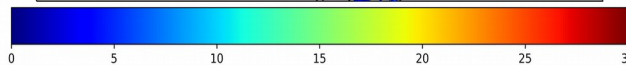
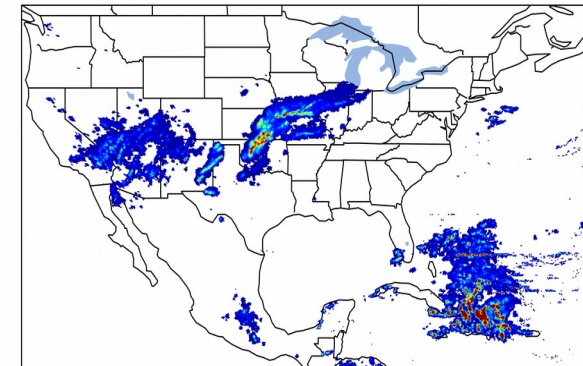
**Fraction of the Day With Lightning (%)**



**Mean 5-min FED**



**Max 5-min FED**



### FED Summary Statistics

#### **1-min FED**

Max 1-min FED: **60 flashes/min**

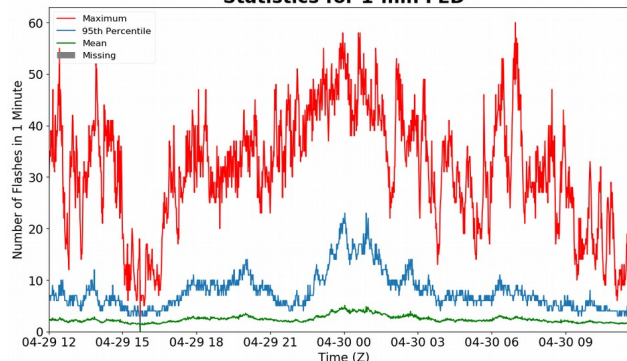
Max min-to-min increase: **23 flashes**

#### **5-min/1-min Updating FED**

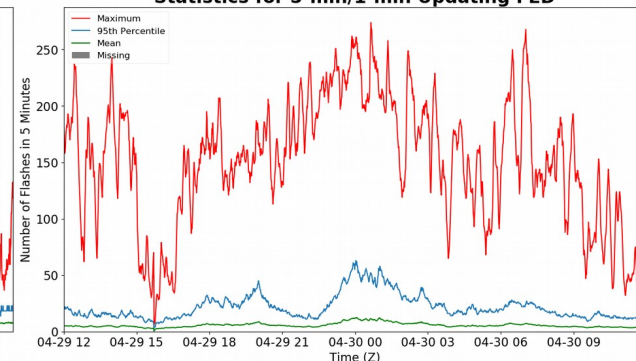
Max 5-min FED: **274 flashes/5min**

Max min-to-min increase: **46 flashes**

**Statistics for 1-min FED**



**Statistics for 5-min/1-min Updating FED**



### Total Optical Energy and Average Flash Area Summary Statistics

#### **5-min/1-min Updating TOE**

Max 5-min TOE:

Max min-to-min increase:

#### **5-min/1-min Updating AFA**

Max 5-min AFA:

Max min-to-min increase: