



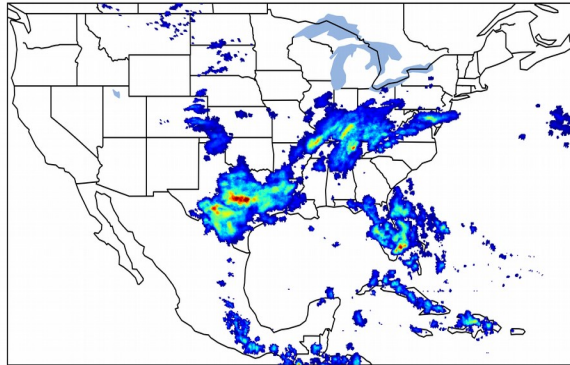
# Geostationary Lightning Mapper Gridded Products Daily Summary



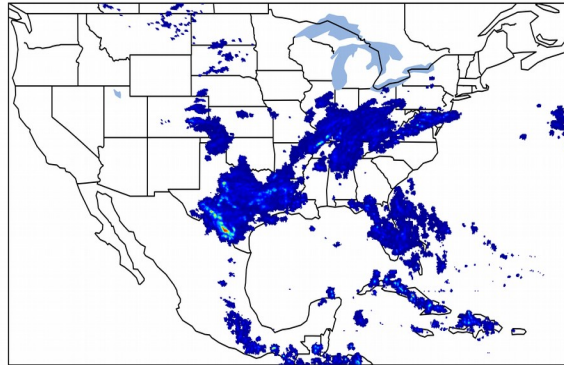
## Overall Summary Statistics for 1200Z-1200Z ending on 05/03/2019

**11.9%** of grid cells detected lightning - **98.8%** of the day had GLM coverage - Duration of GLM outage(s): **17 minute(s)**

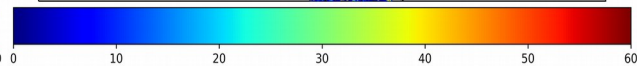
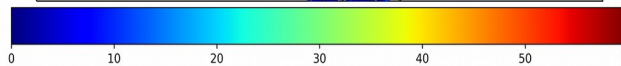
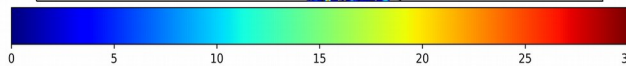
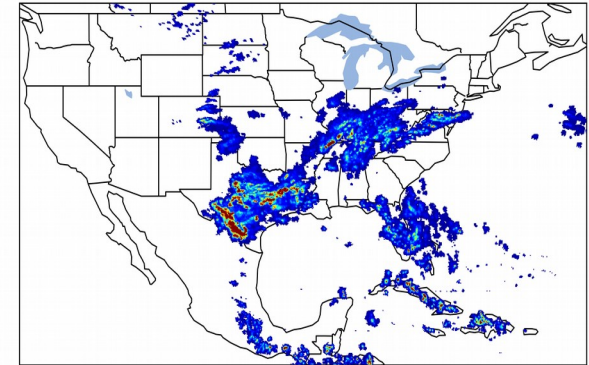
### Fraction of the Day With Lightning (%)



### Mean 5-min FED



### Max 5-min FED



## FED Summary Statistics

### 1-min FED

Max 1-min FED: **51 flashes/min**

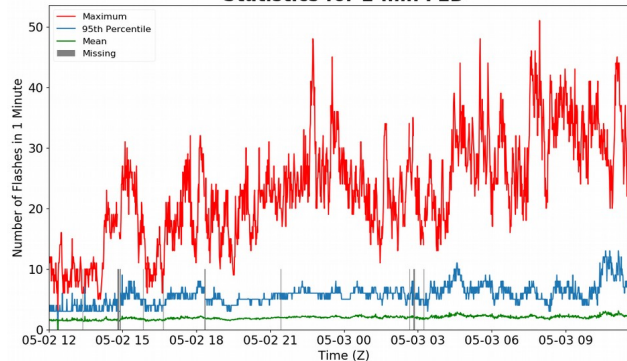
Max min-to-min increase: **21 flashes**

### 5-min/1-min Updating FED

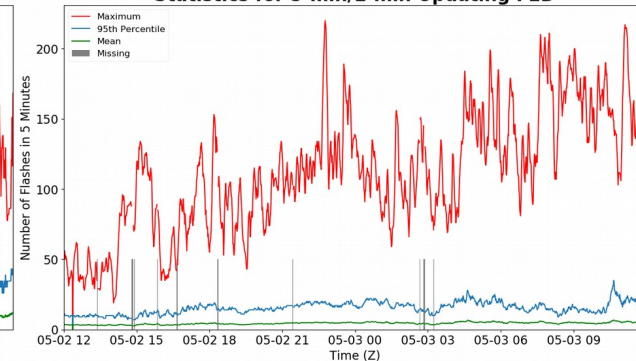
Max 5-min FED: **220 flashes/5min**

Max min-to-min increase: **42 flashes**

### Statistics for 1-min FED



### Statistics for 5-min/1-min Updating FED



## Total Optical Energy and Average Flash Area Summary Statistics

### 5-min/1-min Updating TOE

Max 5-min TOE:

Max min-to-min increase:

### 5-min/1-min Updating AFA

Max 5-min AFA:

Max min-to-min increase: