



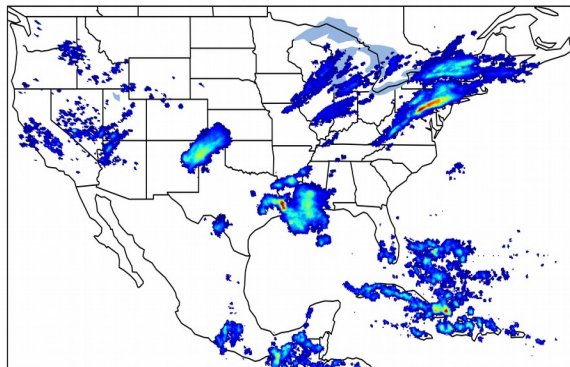
# Geostationary Lightning Mapper Gridded Products Daily Summary



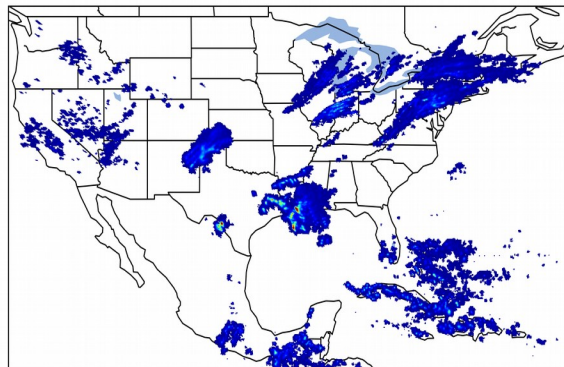
## Overall Summary Statistics for 1200Z-1200Z ending on 05/20/2019

**12.6%** of grid cells detected lightning - **100.0%** of the day had GLM coverage - Duration of GLM outage(s): **0 minute(s)**

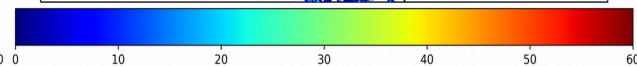
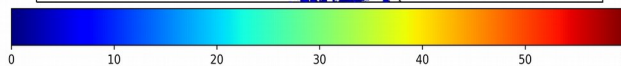
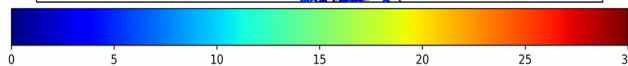
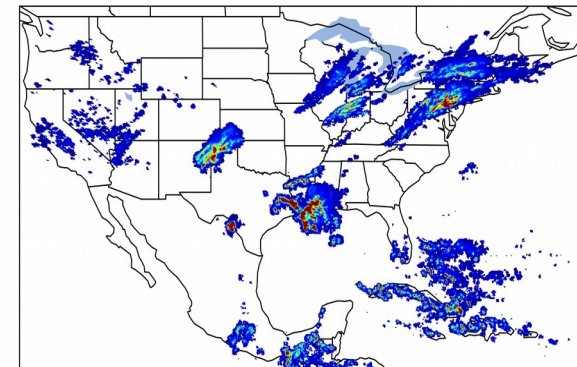
### Fraction of the Day With Lightning (%)



### Mean 5-min FED



### Max 5-min FED



## FED Summary Statistics

### 1-min FED

Max 1-min FED: **47 flashes/min**

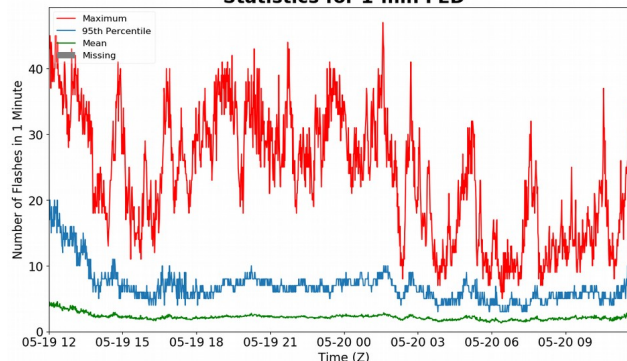
Max min-to-min increase: **18 flashes**

### 5-min/1-min Updating FED

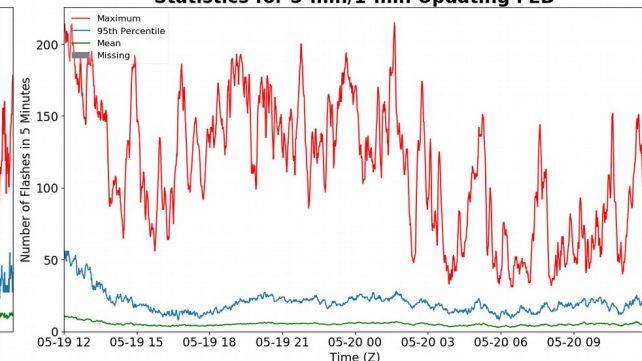
Max 5-min FED: **215 flashes/5min**

Max min-to-min increase: **30 flashes**

### Statistics for 1-min FED



### Statistics for 5-min/1-min Updating FED



## Total Optical Energy and Average Flash Area Summary Statistics

### 5-min/1-min Updating TOE

Max 5-min TOE: **196.6 fj**

Max min-to-min increase: **191.1 fj**

### 5-min/1-min Updating AFA

Max 5-min AFA: **9683.0 km<sup>2</sup>**

Max min-to-min increase: **6915.0 km<sup>2</sup>**