



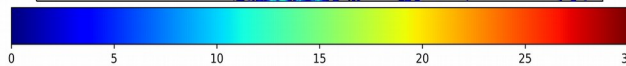
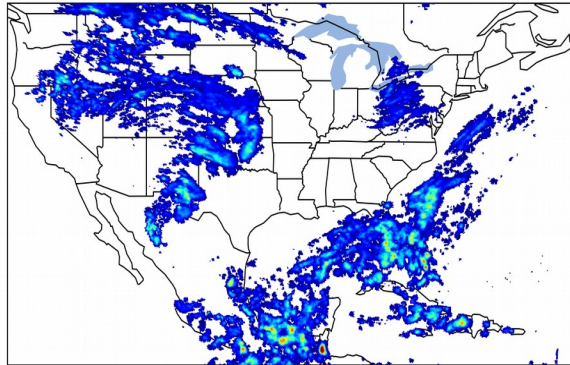
Geostationary Lightning Mapper Gridded Products Daily Summary



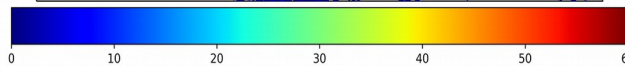
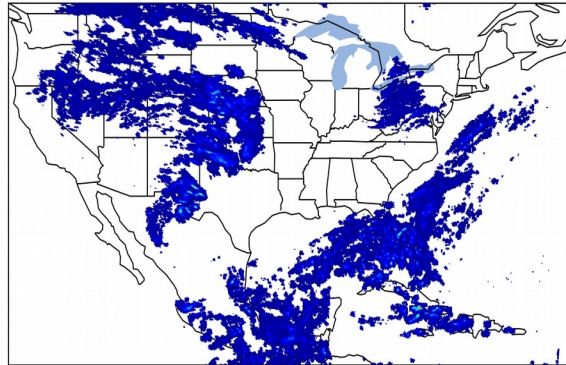
Overall Summary Statistics for 1200Z-1200Z ending on 06/14/2019

22.8% of grid cells detected lightning - **97.4%** of the day had GLM coverage - Duration of GLM outage(s): **38 minute(s)**

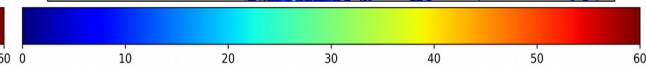
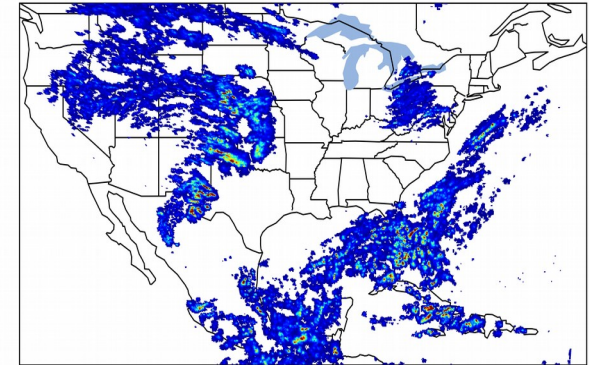
Fraction of the Day With Lightning (%)



Mean 5-min FED



Max 5-min FED



FED Summary Statistics

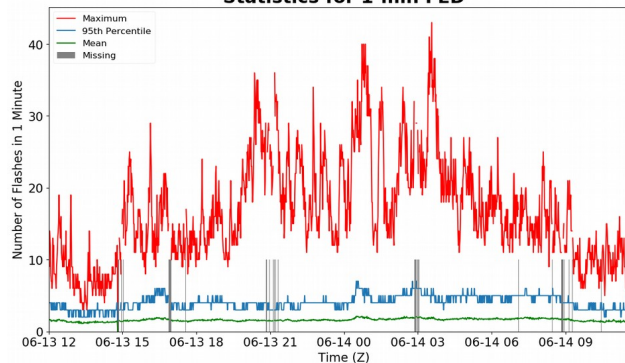
1-min FED

Max 1-min FED: **43 flashes/min**
Max min-to-min increase: **15 flashes**

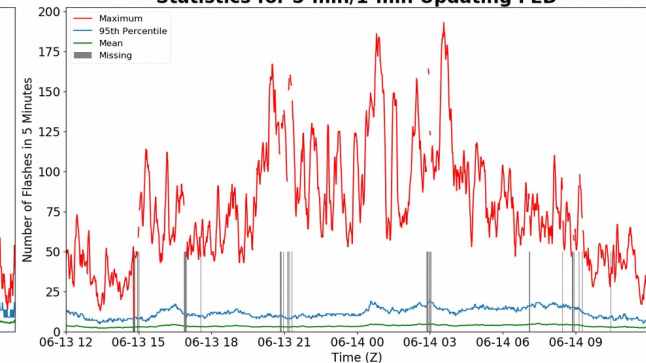
5-min/1-min Updating FED

Max 5-min FED: **193 flashes/5min**
Max min-to-min increase: **78 flashes**

Statistics for 1-min FED



Statistics for 5-min/1-min Updating FED



Total Optical Energy and Average Flash Area Summary Statistics

5-min/1-min Updating TOE

Max 5-min TOE: **189.1 fj**
Max min-to-min increase: **152.6 fj**

5-min/1-min Updating AFA

Max 5-min AFA: **9763.0 km²**
Max min-to-min increase: **7713.0 km²**