



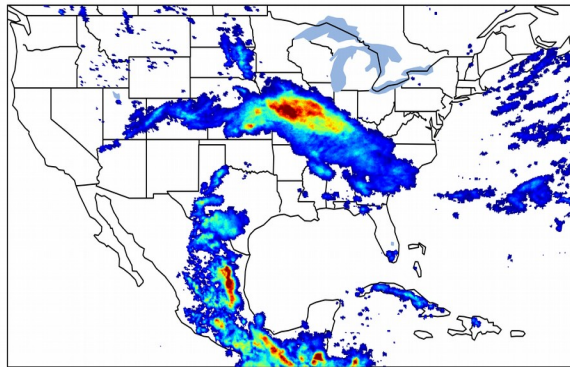
# Geostationary Lightning Mapper Gridded Products Daily Summary



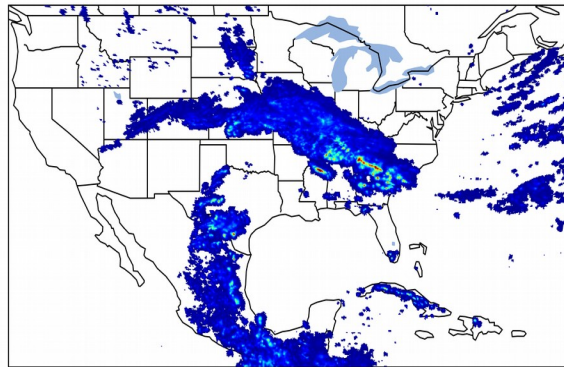
## Overall Summary Statistics for 1200Z-1200Z ending on 06/22/2019

**17.7%** of grid cells detected lightning - **96.2%** of the day had GLM coverage - Duration of GLM outage(s): **55 minute(s)**

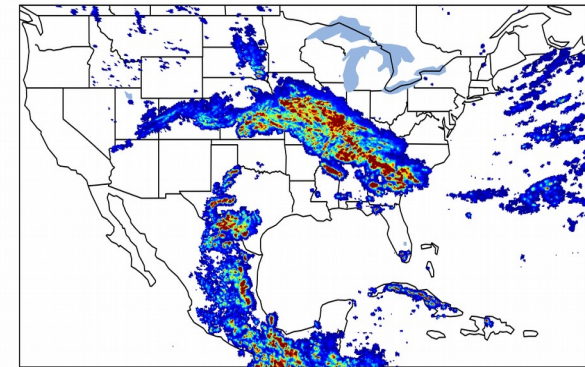
### Fraction of the Day With Lightning (%)



### Mean 5-min FED



### Max 5-min FED



## FED Summary Statistics

### 1-min FED

Max 1-min FED: **56 flashes/min**

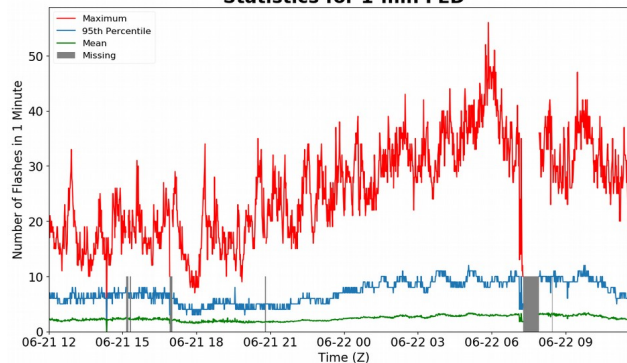
Max min-to-min increase: **31 flashes**

### 5-min/1-min Updating FED

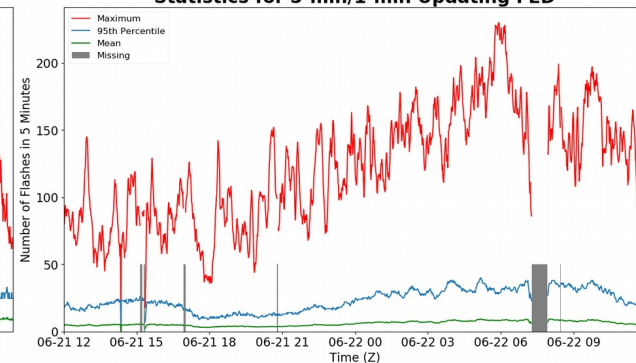
Max 5-min FED: **230 flashes/5min**

Max min-to-min increase: **128 flashes**

### Statistics for 1-min FED



### Statistics for 5-min/1-min Updating FED



## Total Optical Energy and Average Flash Area Summary Statistics

### 5-min/1-min Updating TOE

Max 5-min TOE: **196.6 fj**

Max min-to-min increase: **193.4 fj**

### 5-min/1-min Updating AFA

Max 5-min AFA: **9911.0 km<sup>2</sup>**

Max min-to-min increase: **7803.0 km<sup>2</sup>**