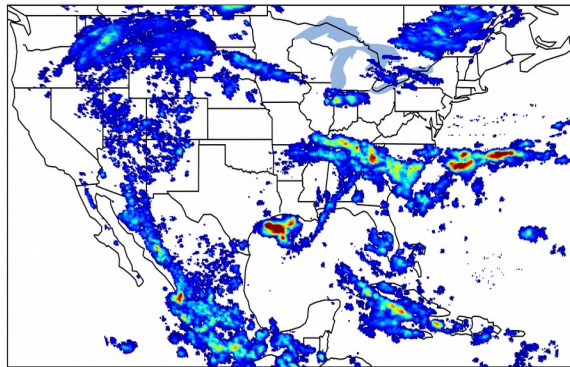
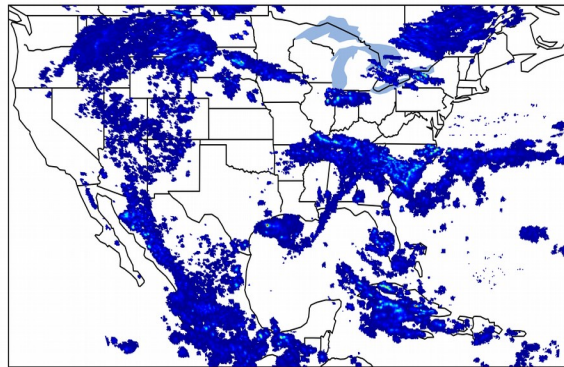


25.2% of grid cells detected lightning - **99.2%** of the day had GLM coverage - Duration of GLM outage(s): **11 minute(s)**

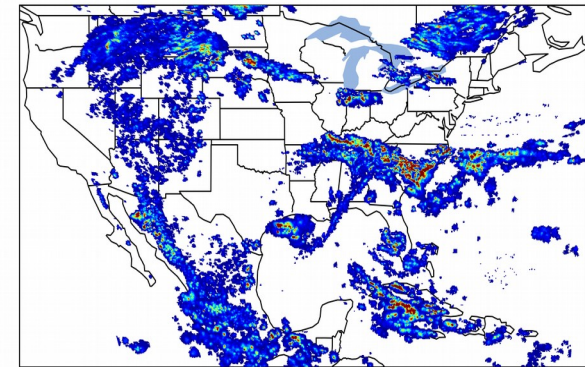
Fraction of the Day With Lightning (%)



Mean 5-min FED



Max 5-min FED



FED Summary Statistics

1-min FED

Max 1-min FED: **81 flashes/min**

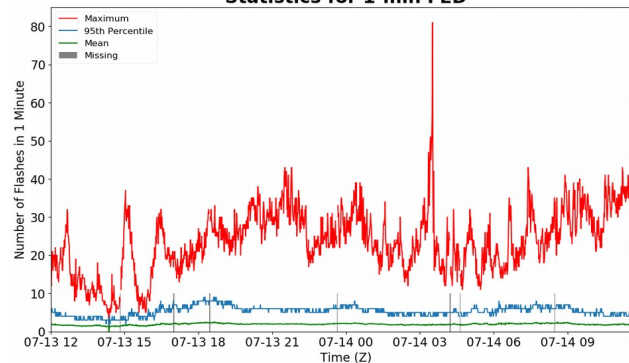
Max min-to-min increase: **44 flashes**

5-min/1-min Updating FED

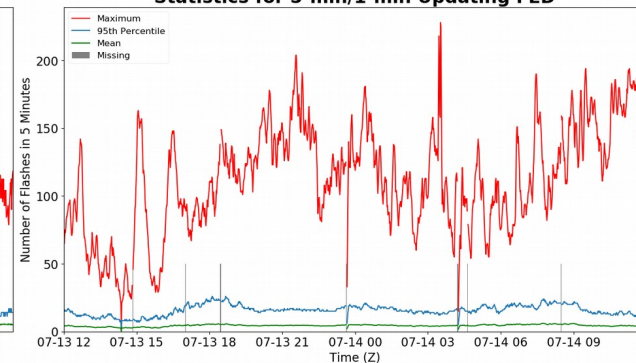
Max 5-min FED: **228 flashes/5min**

Max min-to-min increase: **70 flashes**

Statistics for 1-min FED



Statistics for 5-min/1-min Updating FED



Total Optical Energy and Average Flash Area Summary Statistics

5-min/1-min Updating TOE

Max 5-min TOE: **196.6 fj**

Max min-to-min increase: **195.9 fj**

5-min/1-min Updating AFA

Max 5-min AFA: **9675.0 km²**

Max min-to-min increase: **8425.0 km²**