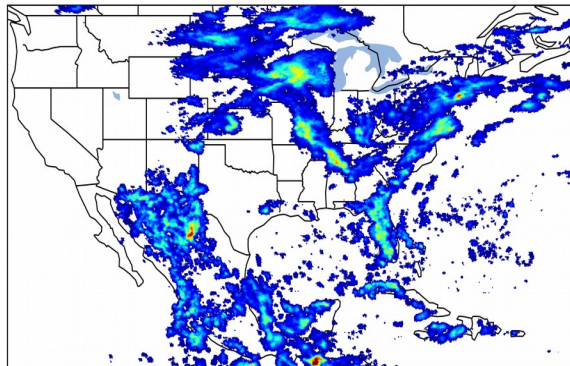
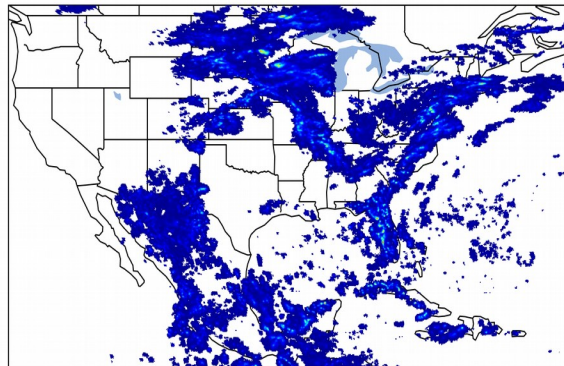


27.3% of grid cells detected lightning - **98.2%** of the day had GLM coverage - Duration of GLM outage(s): **26 minute(s)**

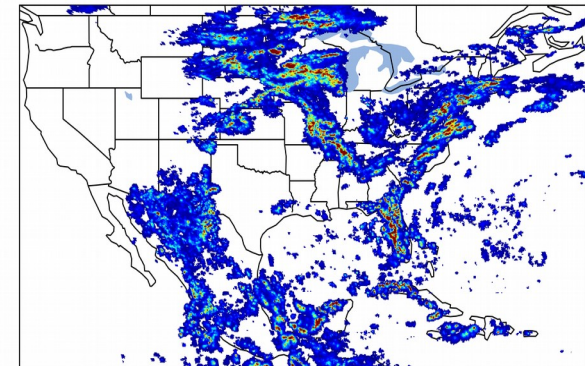
Fraction of the Day With Lightning (%)



Mean 5-min FED



Max 5-min FED



FED Summary Statistics

1-min FED

Max 1-min FED: **45 flashes/min**

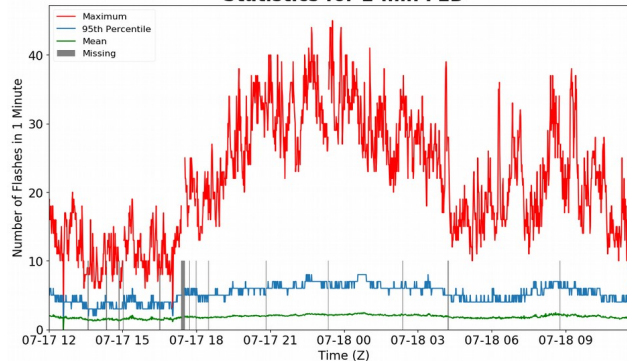
Max min-to-min increase: **17 flashes**

5-min/1-min Updating FED

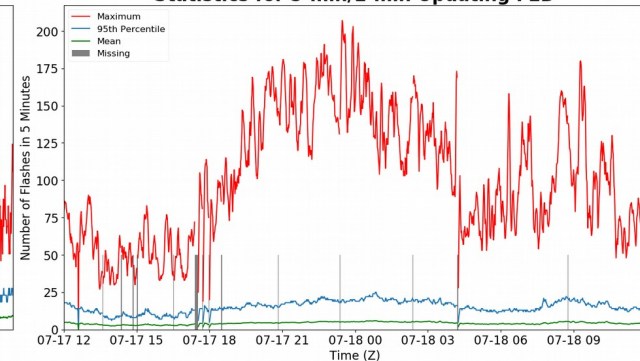
Max 5-min FED: **207 flashes/5min**

Max min-to-min increase: **35 flashes**

Statistics for 1-min FED



Statistics for 5-min/1-min Updating FED



Total Optical Energy and Average Flash Area Summary Statistics

5-min/1-min Updating TOE

Max 5-min TOE: **195.7 fj**

Max min-to-min increase: **187.7 fj**

5-min/1-min Updating AFA

Max 5-min AFA: **9363.0 km²**

Max min-to-min increase: **7028.0 km²**