



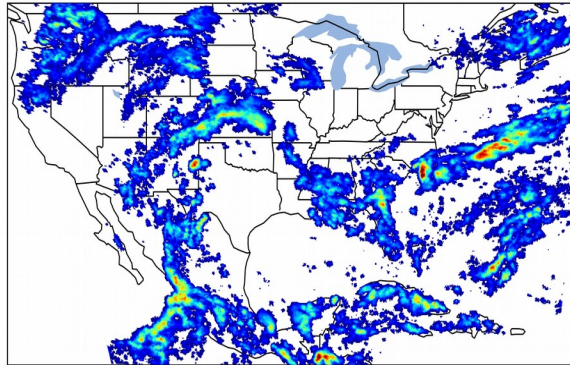
Geostationary Lightning Mapper Gridded Products Daily Summary



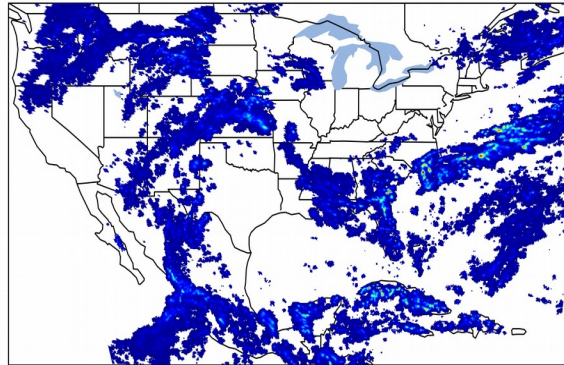
Overall Summary Statistics for 1200Z-1200Z ending on 08/11/2019

31.6% of grid cells detected lightning - **99.0%** of the day had GLM coverage - Duration of GLM outage(s): **14 minute(s)**

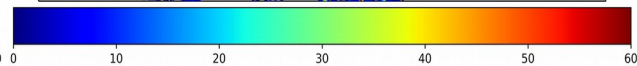
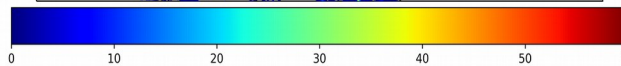
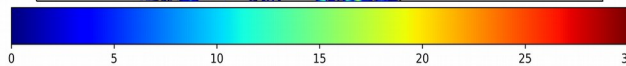
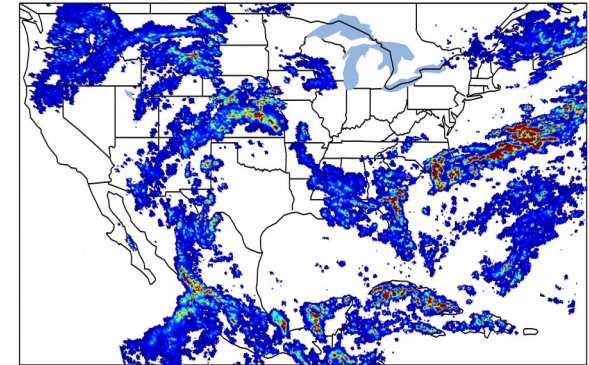
Fraction of the Day With Lightning (%)



Mean 5-min FED



Max 5-min FED



FED Summary Statistics

1-min FED

Max 1-min FED: **56 flashes/min**

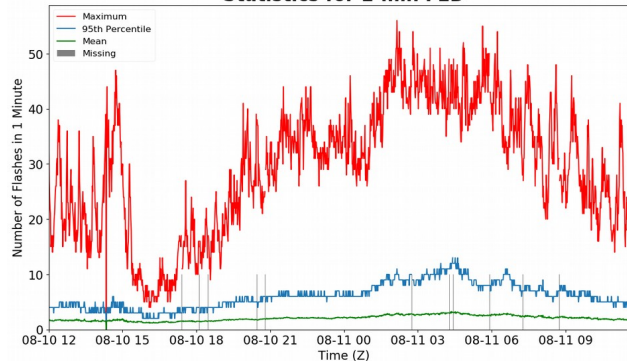
Max min-to-min increase: **23 flashes**

5-min/1-min Updating FED

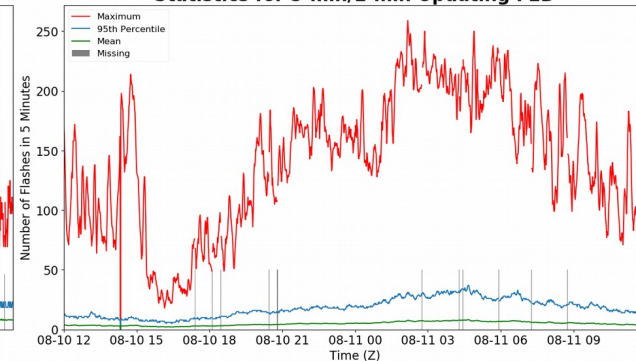
Max 5-min FED: **259 flashes/5min**

Max min-to-min increase: **59 flashes**

Statistics for 1-min FED



Statistics for 5-min/1-min Updating FED



Total Optical Energy and Average Flash Area Summary Statistics

5-min/1-min Updating TOE

Max 5-min TOE: **196.6 fj**

Max min-to-min increase: **194.3 fj**

5-min/1-min Updating AFA

Max 5-min AFA: **9875.0 km²**

Max min-to-min increase: **7892.0 km²**