



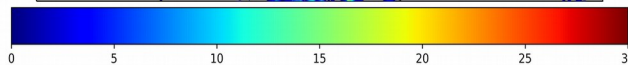
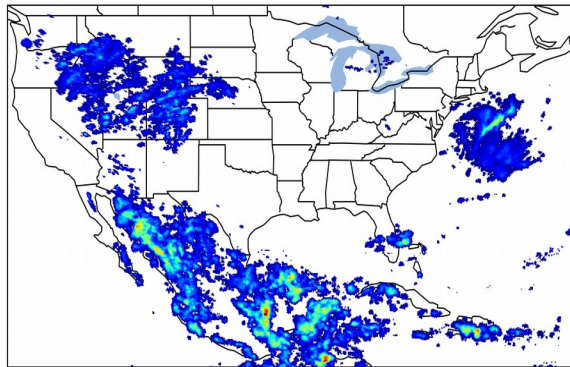
Geostationary Lightning Mapper Gridded Products Daily Summary



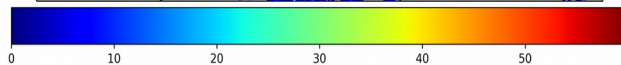
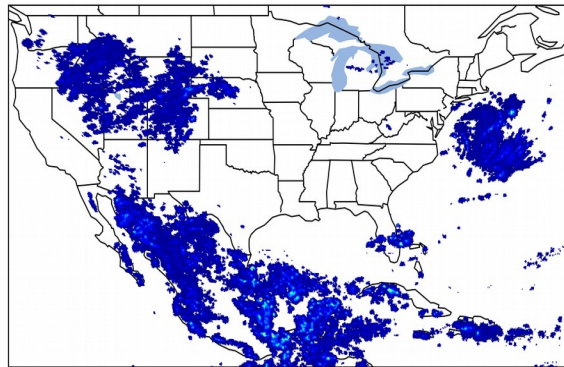
Overall Summary Statistics for 1200Z-1200Z ending on 09/07/2019

18.9% of grid cells detected lightning - **97.2%** of the day had GLM coverage - Duration of GLM outage(s): **40 minute(s)**

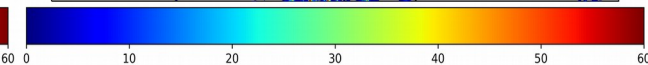
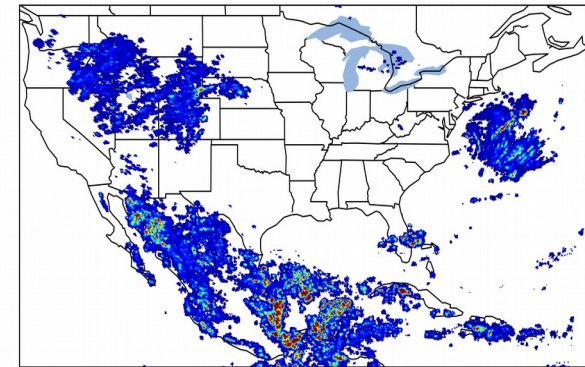
Fraction of the Day With Lightning (%)



Mean 5-min FED



Max 5-min FED



FED Summary Statistics

1-min FED

Max 1-min FED: **50 flashes/min**

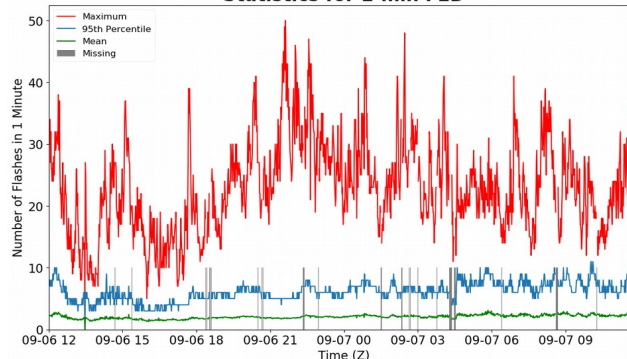
Max min-to-min increase: **23 flashes**

5-min/1-min Updating FED

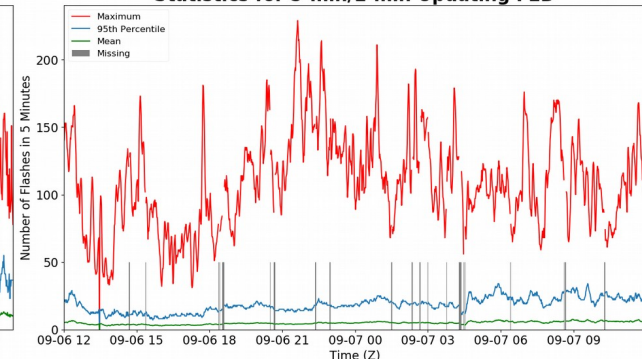
Max 5-min FED: **229 flashes/5min**

Max min-to-min increase: **76 flashes**

Statistics for 1-min FED



Statistics for 5-min/1-min Updating FED



Total Optical Energy and Average Flash Area Summary Statistics

5-min/1-min Updating TOE

Max 5-min TOE: **196.4 fj**

Max min-to-min increase: **193.4 fj**

5-min/1-min Updating AFA

Max 5-min AFA: **9577.0 km²**

Max min-to-min increase: **7304.0 km²**