



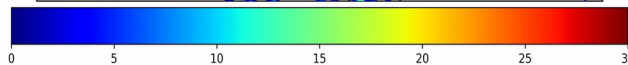
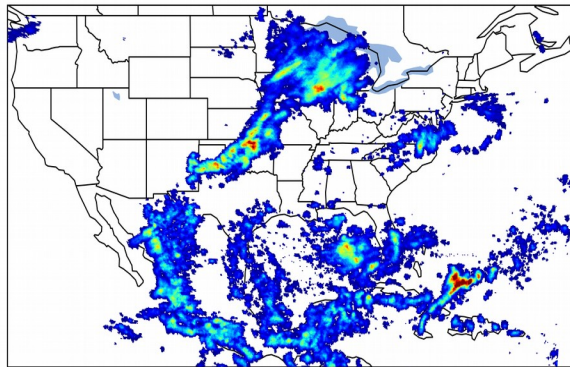
Geostationary Lightning Mapper Gridded Products Daily Summary



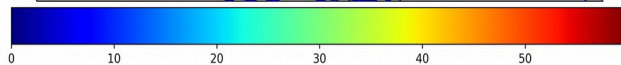
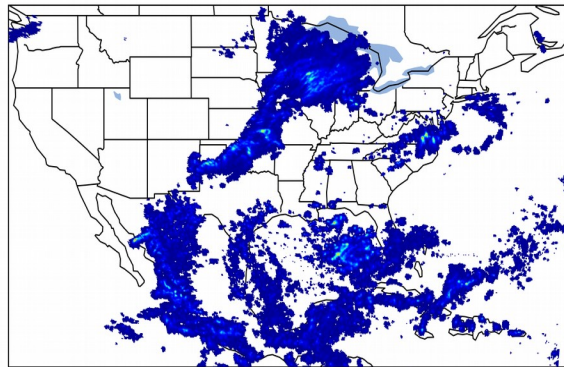
Overall Summary Statistics for 1200Z-1200Z ending on 09/13/2019

25.1% of grid cells detected lightning - **95.6%** of the day had GLM coverage - Duration of GLM outage(s): **64 minute(s)**

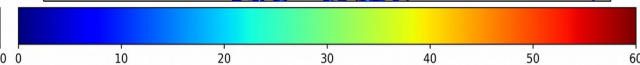
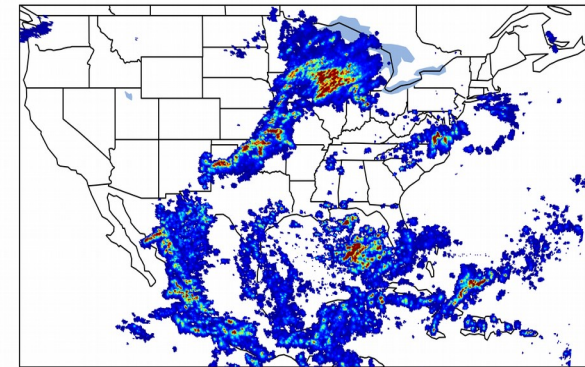
Fraction of the Day With Lightning (%)



Mean 5-min FED



Max 5-min FED



FED Summary Statistics

1-min FED

Max 1-min FED: **53 flashes/min**

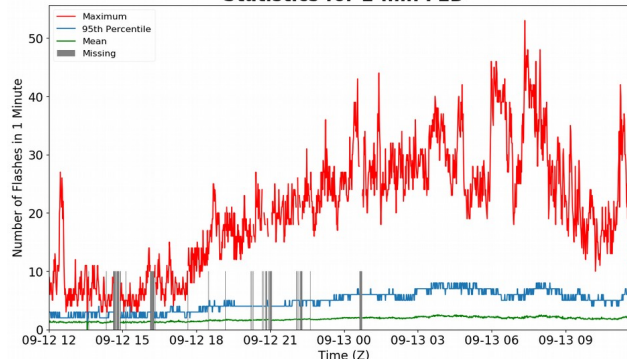
Max min-to-min increase: **16 flashes**

5-min/1-min Updating FED

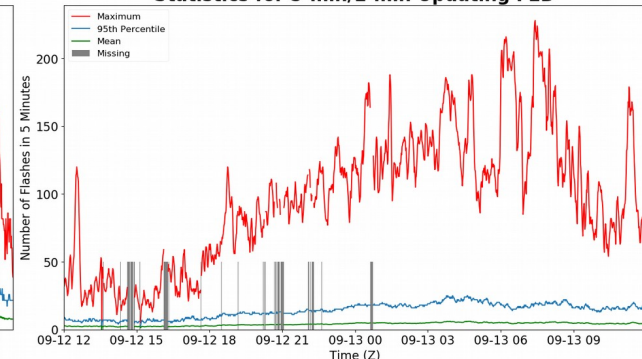
Max 5-min FED: **228 flashes/5min**

Max min-to-min increase: **61 flashes**

Statistics for 1-min FED



Statistics for 5-min/1-min Updating FED



Total Optical Energy and Average Flash Area Summary Statistics

5-min/1-min Updating TOE

Max 5-min TOE: **196.5 fj**

Max min-to-min increase: **191.9 fj**

5-min/1-min Updating AFA

Max 5-min AFA: **9955.0 km²**

Max min-to-min increase: **8156.0 km²**