



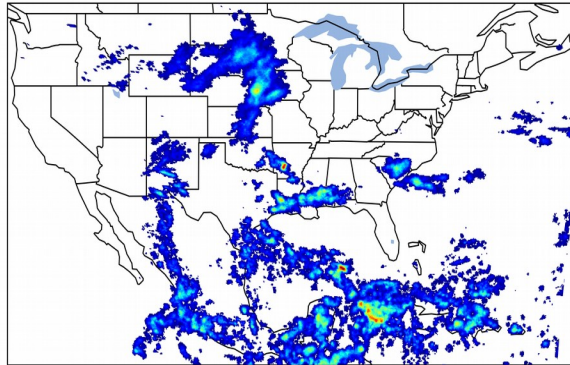
Geostationary Lightning Mapper Gridded Products Daily Summary



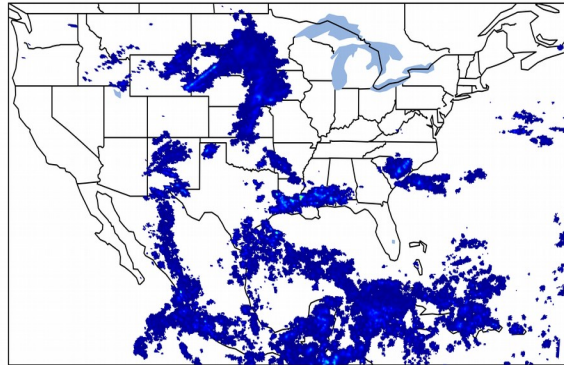
Overall Summary Statistics for 1200Z-1200Z ending on 10/05/2019

21.2% of grid cells detected lightning - **93.9%** of the day had GLM coverage - Duration of GLM outage(s): **88 minute(s)**

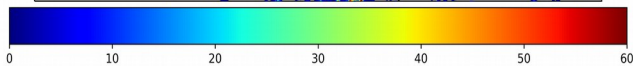
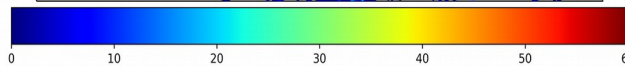
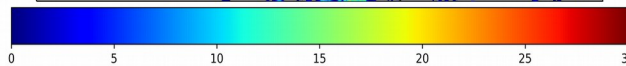
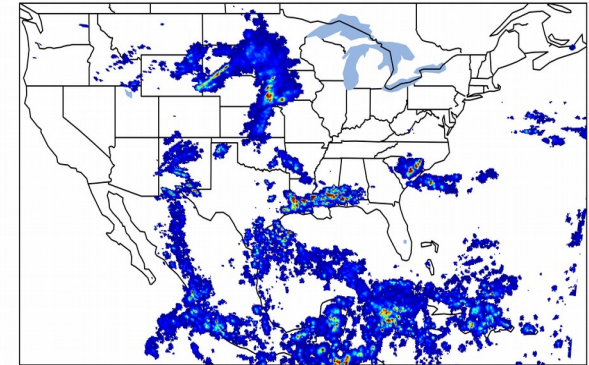
Fraction of the Day With Lightning (%)



Mean 5-min FED



Max 5-min FED



FED Summary Statistics

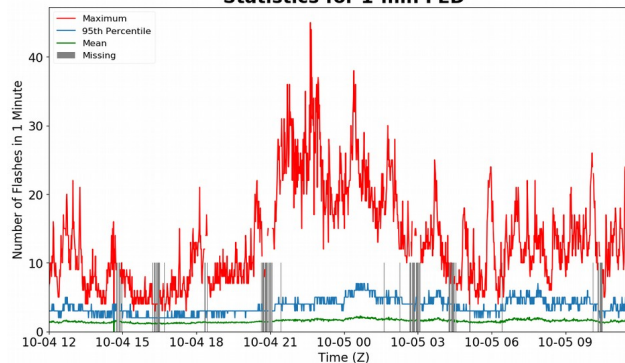
1-min FED

Max 1-min FED: **45 flashes/min**
Max min-to-min increase: **20 flashes**

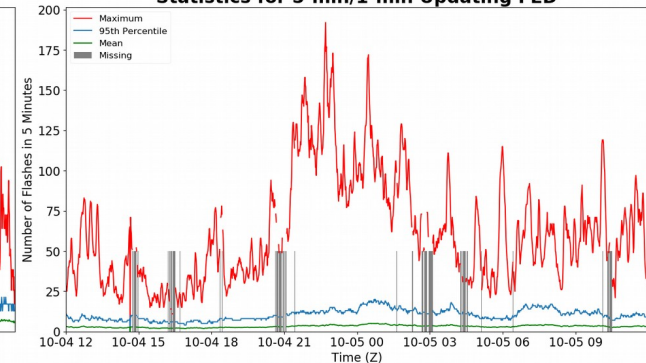
5-min/1-min Updating FED

Max 5-min FED: **192 flashes/5min**
Max min-to-min increase: **46 flashes**

Statistics for 1-min FED



Statistics for 5-min/1-min Updating FED



Total Optical Energy and Average Flash Area Summary Statistics

5-min/1-min Updating TOE

Max 5-min TOE: **161.0 fj**
Max min-to-min increase: **75.6 fj**

5-min/1-min Updating AFA

Max 5-min AFA: **9996.0 km²**
Max min-to-min increase: **9031.0 km²**