



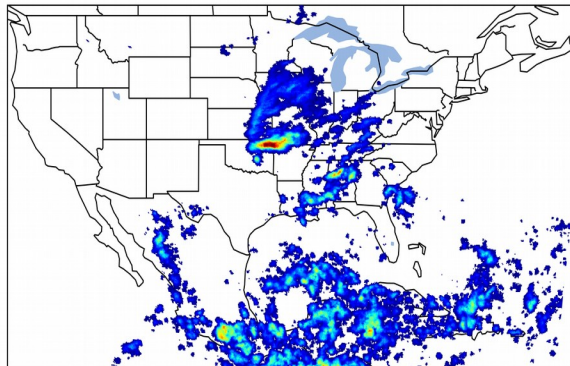
Geostationary Lightning Mapper Gridded Products Daily Summary



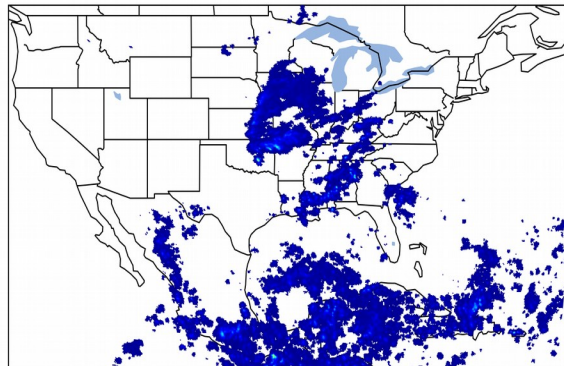
Overall Summary Statistics for 1200Z-1200Z ending on 10/06/2019

20.2% of grid cells detected lightning - **90.6%** of the day had GLM coverage - Duration of GLM outage(s): **136 minute(s)**

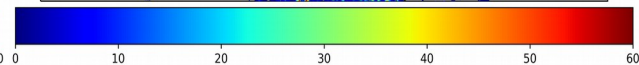
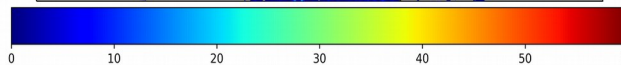
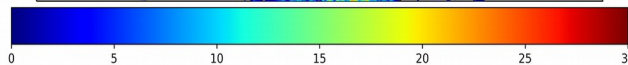
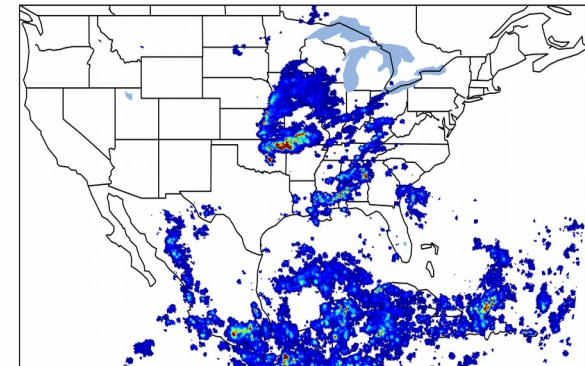
Fraction of the Day With Lightning (%)



Mean 5-min FED



Max 5-min FED



FED Summary Statistics

1-min FED

Max 1-min FED: **44 flashes/min**

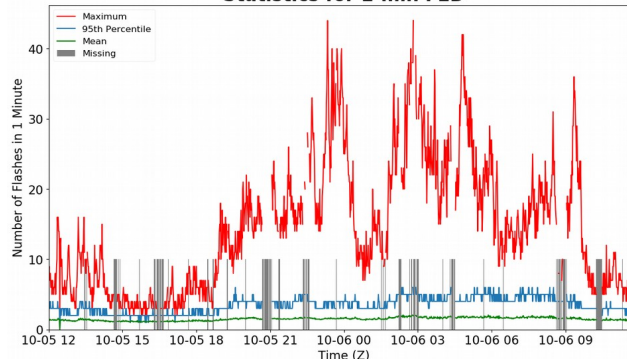
Max min-to-min increase: **17 flashes**

5-min/1-min Updating FED

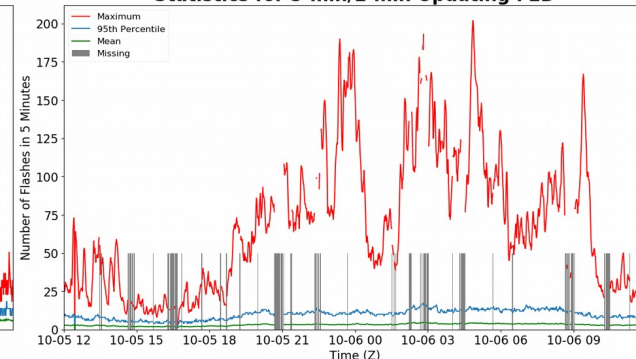
Max 5-min FED: **202 flashes/5min**

Max min-to-min increase: **49 flashes**

Statistics for 1-min FED



Statistics for 5-min/1-min Updating FED



Total Optical Energy and Average Flash Area Summary Statistics

5-min/1-min Updating TOE

Max 5-min TOE: **187.6 fj**

Max min-to-min increase: **65.8 fj**

5-min/1-min Updating AFA

Max 5-min AFA: **9815.0 km²**

Max min-to-min increase: **8020.0 km²**