



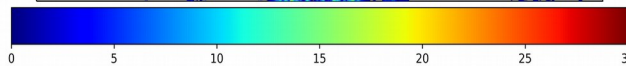
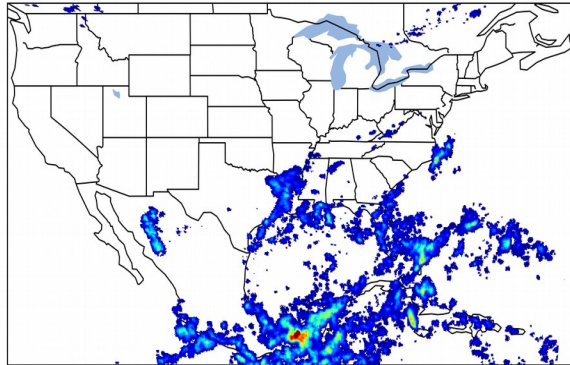
Geostationary Lightning Mapper Gridded Products Daily Summary



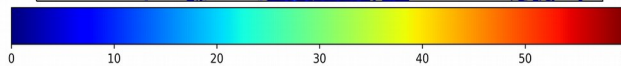
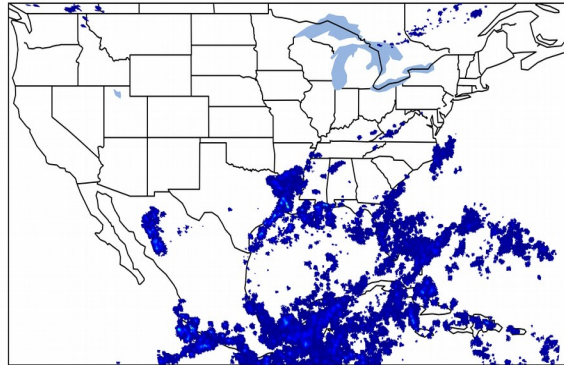
Overall Summary Statistics for 1200Z-1200Z ending on 10/08/2019

16.8% of grid cells detected lightning - **97.6%** of the day had GLM coverage - Duration of GLM outage(s): **35 minute(s)**

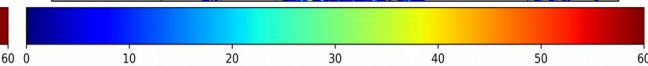
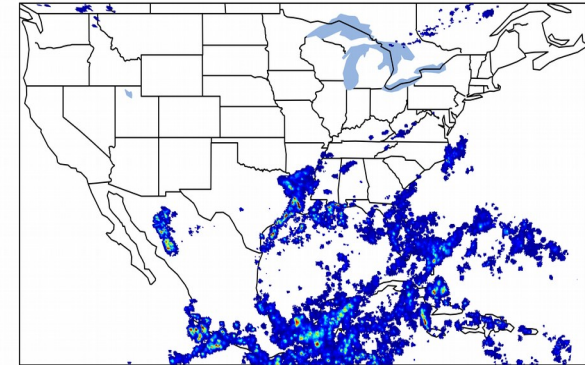
Fraction of the Day With Lightning (%)



Mean 5-min FED



Max 5-min FED



FED Summary Statistics

1-min FED

Max 1-min FED: **41 flashes/min**

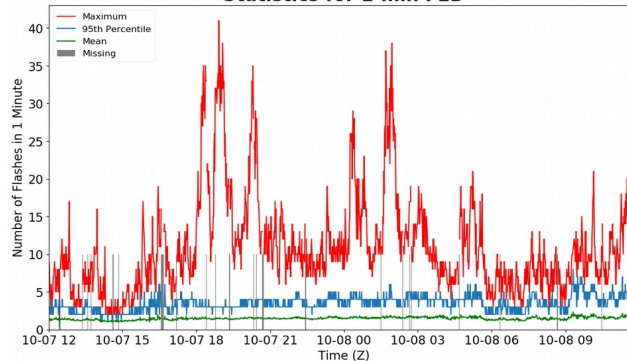
Max min-to-min increase: **14 flashes**

5-min/1-min Updating FED

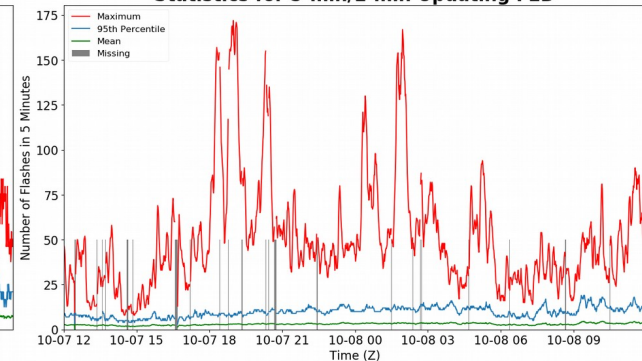
Max 5-min FED: **172 flashes/5min**

Max min-to-min increase: **29 flashes**

Statistics for 1-min FED



Statistics for 5-min/1-min Updating FED



Total Optical Energy and Average Flash Area Summary Statistics

5-min/1-min Updating TOE

Max 5-min TOE: **132.0 fj**

Max min-to-min increase: **53.6 fj**

5-min/1-min Updating AFA

Max 5-min AFA: **9861.0 km²**

Max min-to-min increase: **8084.0 km²**