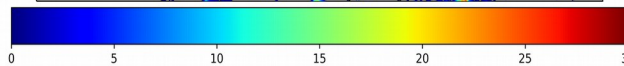
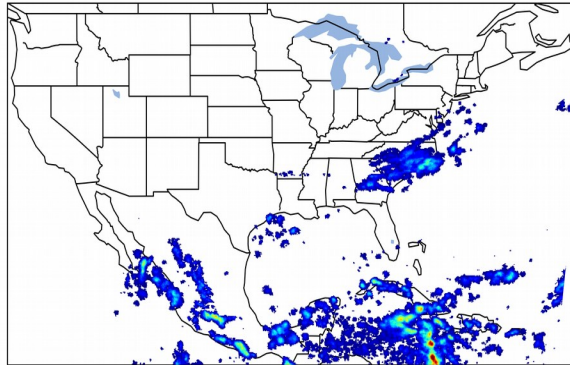


# Geostationary Lightning Mapper Gridded Products Daily Summary

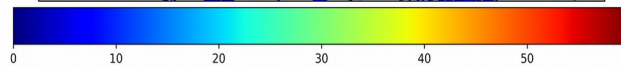
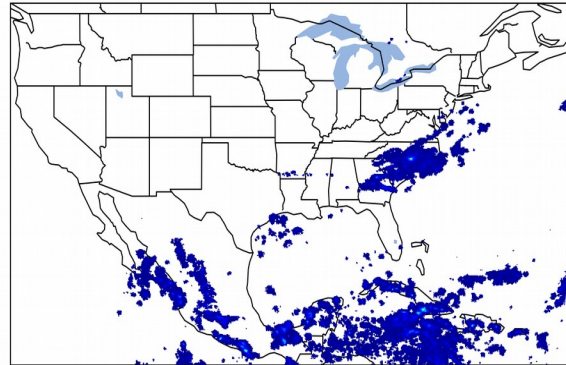
Overall Summary Statistics for 1200Z-1200Z ending on 10/14/2019

**12.6%** of grid cells detected lightning - **97.5%** of the day had GLM coverage - Duration of GLM outage(s): **36 minute(s)**

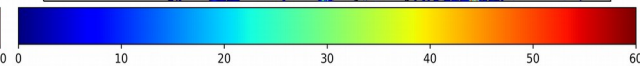
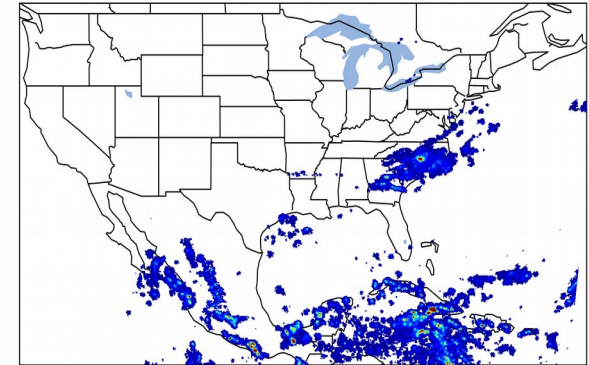
**Fraction of the Day With Lightning (%)**



**Mean 5-min FED**



**Max 5-min FED**



## FED Summary Statistics

### **1-min FED**

Max 1-min FED: **31 flashes/min**

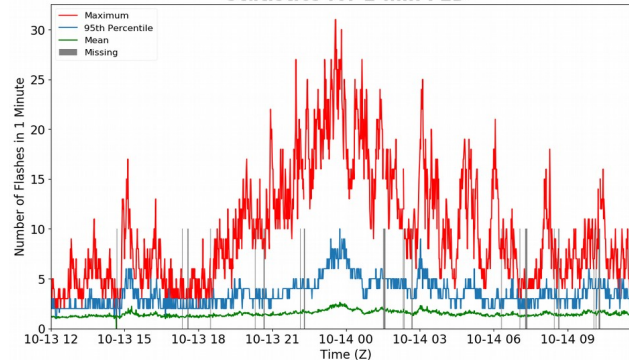
Max min-to-min increase: **11 flashes**

### **5-min/1-min Updating FED**

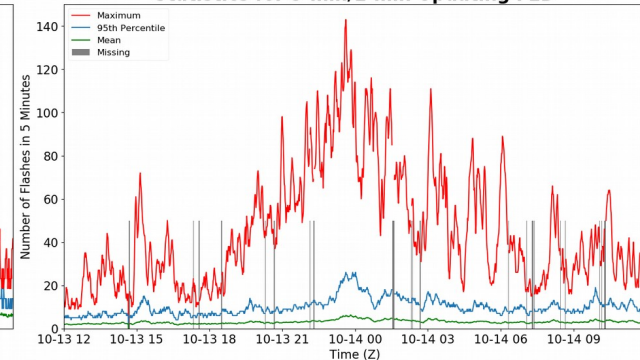
Max 5-min FED: **143 flashes/5min**

Max min-to-min increase: **30 flashes**

**Statistics for 1-min FED**



**Statistics for 5-min/1-min Updating FED**



## Total Optical Energy and Average Flash Area Summary Statistics

### **5-min/1-min Updating TOE**

Max 5-min TOE: **195.6 fj**

Max min-to-min increase: **178.8 fj**

### **5-min/1-min Updating AFA**

Max 5-min AFA: **9886.0 km<sup>2</sup>**

Max min-to-min increase: **6889.0 km<sup>2</sup>**