



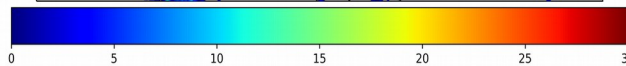
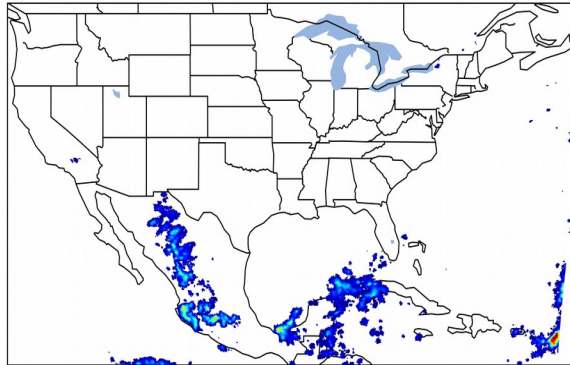
Geostationary Lightning Mapper Gridded Products Daily Summary



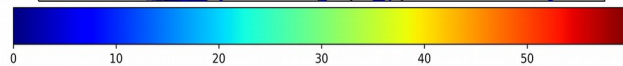
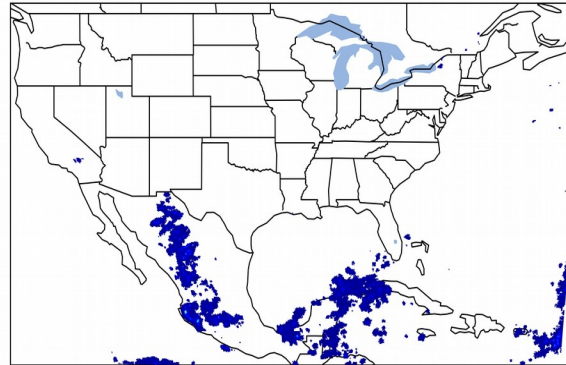
Overall Summary Statistics for 1200Z-1200Z ending on 11/04/2019

5.6% of grid cells detected lightning - **98.0%** of the day had GLM coverage - Duration of GLM outage(s): **29 minute(s)**

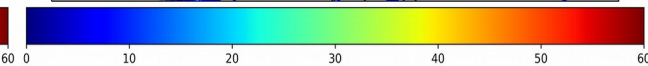
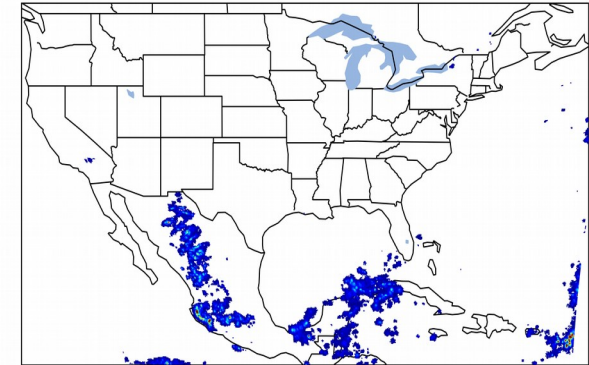
Fraction of the Day With Lightning (%)



Mean 5-min FED



Max 5-min FED



FED Summary Statistics

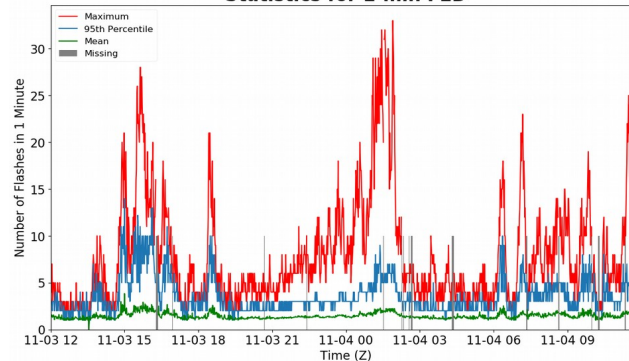
1-min FED

Max 1-min FED: **33 flashes/min**
Max min-to-min increase: **12 flashes**

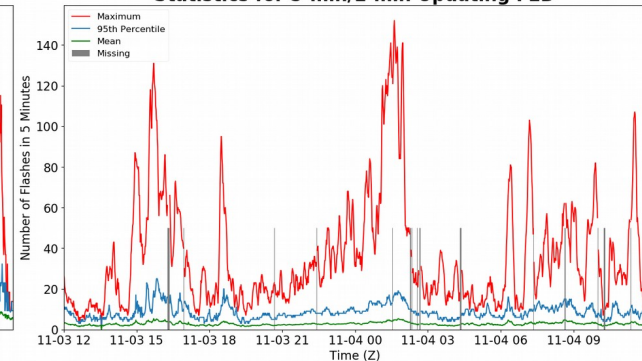
5-min/1-min Updating FED

Max 5-min FED: **152 flashes/5min**
Max min-to-min increase: **24 flashes**

Statistics for 1-min FED



Statistics for 5-min/1-min Updating FED



Total Optical Energy and Average Flash Area Summary Statistics

5-min/1-min Updating TOE

Max 5-min TOE: **137.0 fj**
Max min-to-min increase: **53.2 fj**

5-min/1-min Updating AFA

Max 5-min AFA: **9957.0 km²**
Max min-to-min increase: **6264.0 km²**