



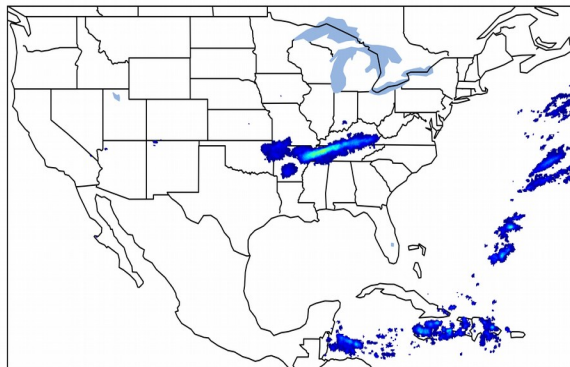
# Geostationary Lightning Mapper Gridded Products Daily Summary



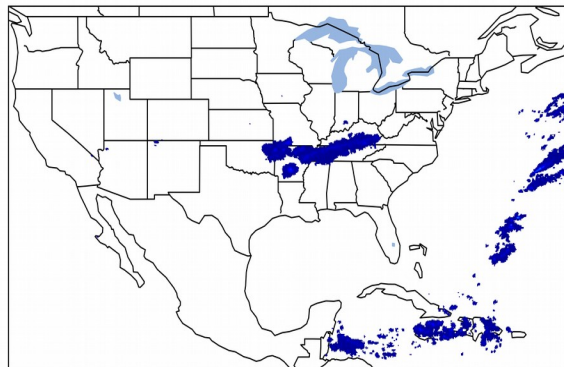
## Overall Summary Statistics for 1200Z-1200Z ending on 12/16/2019

**3.9%** of grid cells detected lightning - **100.0%** of the day had GLM coverage - Duration of GLM outage(s): **0 minute(s)**

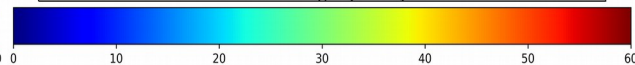
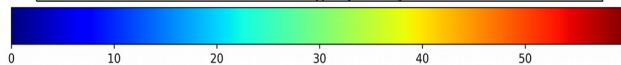
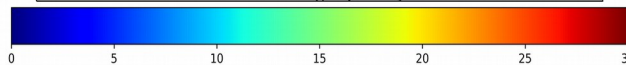
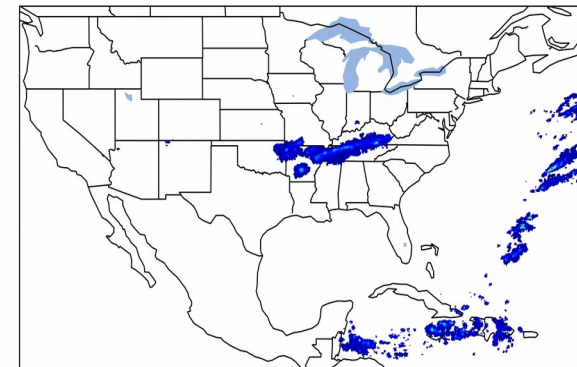
### Fraction of the Day With Lightning (%)



### Mean 5-min FED



### Max 5-min FED



### FED Summary Statistics

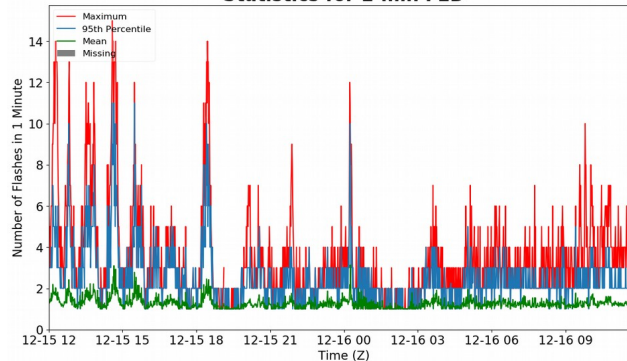
#### **1-min FED**

Max 1-min FED: **15 flashes/min**  
Max min-to-min increase: **7 flashes**

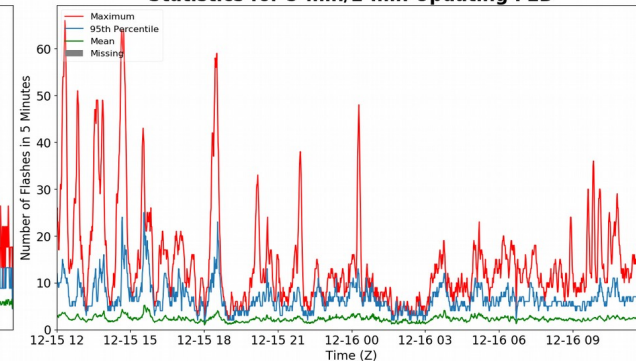
#### **5-min/1-min Updating FED**

Max 5-min FED: **66 flashes/5min**  
Max min-to-min increase: **11 flashes**

### Statistics for 1-min FED



### Statistics for 5-min/1-min Updating FED



### Total Optical Energy and Average Flash Area Summary Statistics

#### **5-min/1-min Updating TOE**

Max 5-min TOE: **101.2 fj**  
Max min-to-min increase: **44.7 fj**

#### **5-min/1-min Updating AFA**

Max 5-min AFA: **9894.0 km<sup>2</sup>**  
Max min-to-min increase: **7332.0 km<sup>2</sup>**