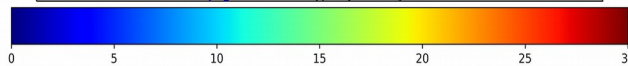
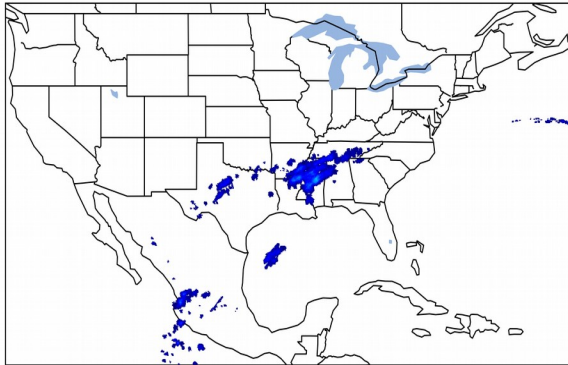


# Geostationary Lightning Mapper Gridded Products Daily Summary

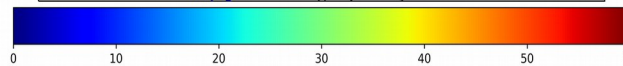
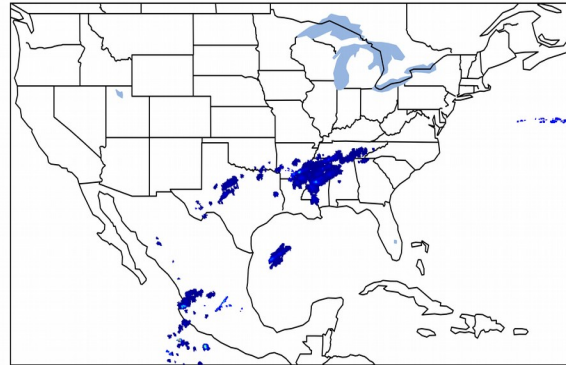
Overall Summary Statistics for 1200Z-1200Z ending on 02/05/2020

**2.5%** of grid cells detected lightning - **97.1%** of the day had GLM coverage - Duration of GLM outage(s): **42 minute(s)**

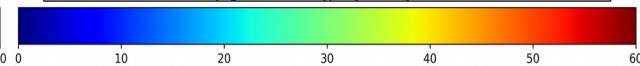
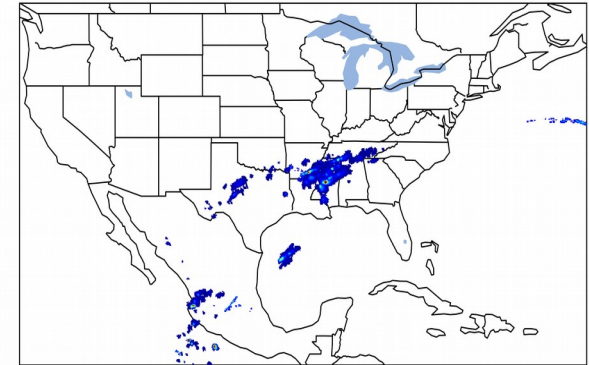
## Fraction of the Day With Lightning (%)



## Mean 5-min FED



## Max 5-min FED



## FED Summary Statistics

### 1-min FED

Max 1-min FED: **24 flashes/min**

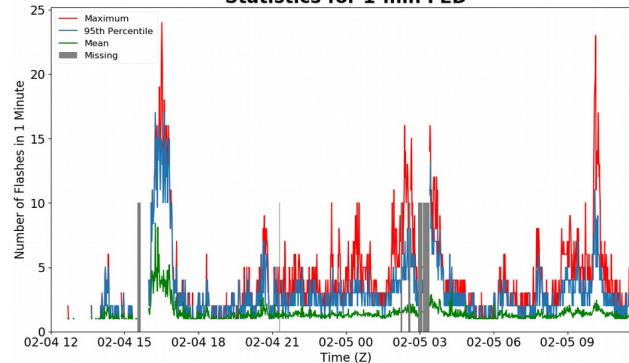
Max min-to-min increase: **12 flashes**

### 5-min/1-min Updating FED

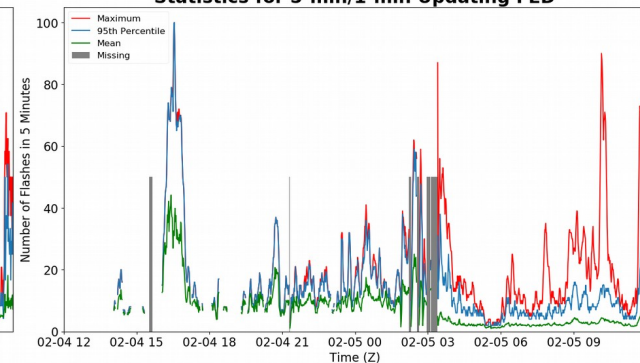
Max 5-min FED: **100 flashes/5min**

Max min-to-min increase: **76 flashes**

## Statistics for 1-min FED



## Statistics for 5-min/1-min Updating FED



## Total Optical Energy and Average Flash Area Summary Statistics

### 5-min/1-min Updating TOE

Max 5-min TOE: **108.3 fj**

Max min-to-min increase: **26.8 fj**

### 5-min/1-min Updating AFA

Max 5-min AFA: **28015.0 km<sup>2</sup>**

Max min-to-min increase: **24519.0 km<sup>2</sup>**