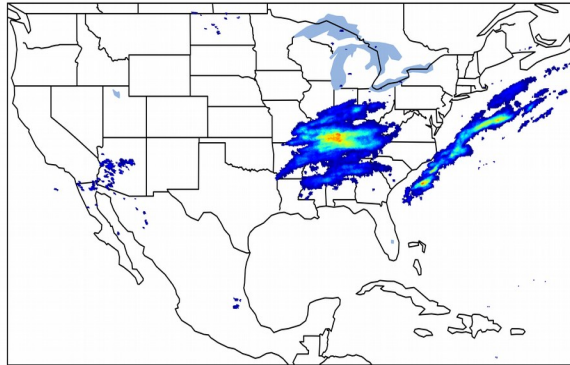


# Geostationary Lightning Mapper Gridded Products Daily Summary

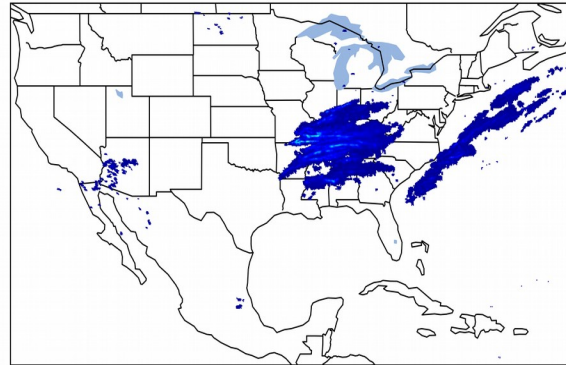
## Overall Summary Statistics for 1200Z-1200Z ending on 03/03/2020

**4.9%** of grid cells detected lightning - **100.0%** of the day had GLM coverage - Duration of GLM outage(s): **0 minute(s)**

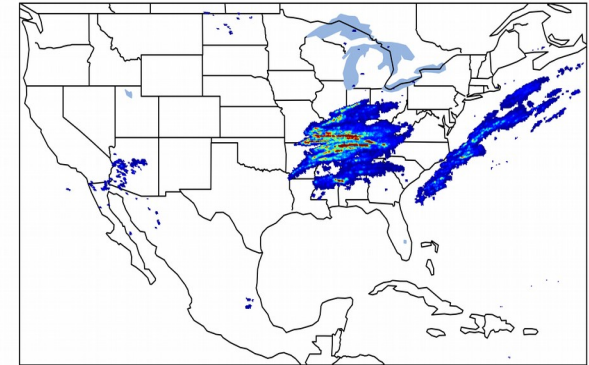
### Fraction of the Day With Lightning (%)



### Mean 5-min FED



### Max 5-min FED



### FED Summary Statistics

#### 1-min FED

Max 1-min FED: **48 flashes/min**

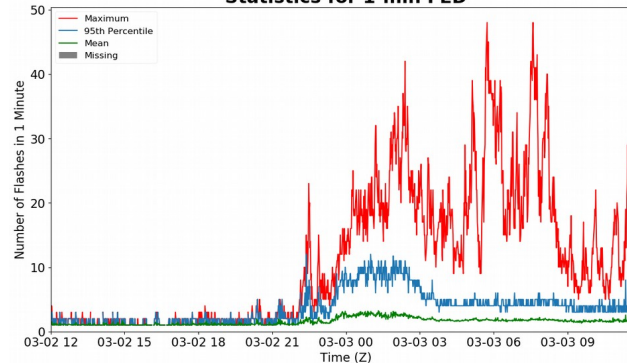
Max min-to-min increase: **16 flashes**

#### 5-min/1-min Updating FED

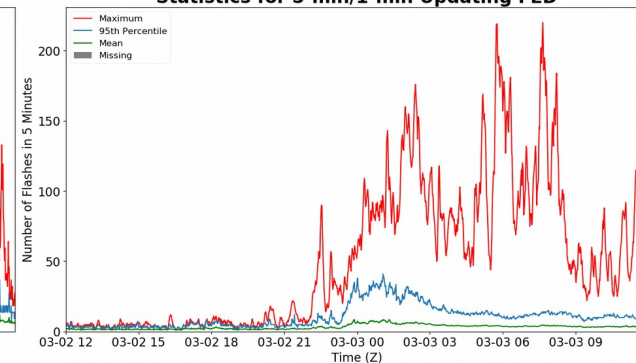
Max 5-min FED: **220 flashes/5min**

Max min-to-min increase: **36 flashes**

### Statistics for 1-min FED



### Statistics for 5-min/1-min Updating FED



## Total Optical Energy and Average Flash Area Summary Statistics

### 5-min/1-min Updating TOE

Max 5-min TOE: **195.6 fJ**

Max min-to-min increase: **44.5 fJ**

### 5-min/1-min Updating AFA

Max 5-min AFA: **51162.0 km<sup>2</sup>**

Max min-to-min increase: **25471.0 km<sup>2</sup>**