



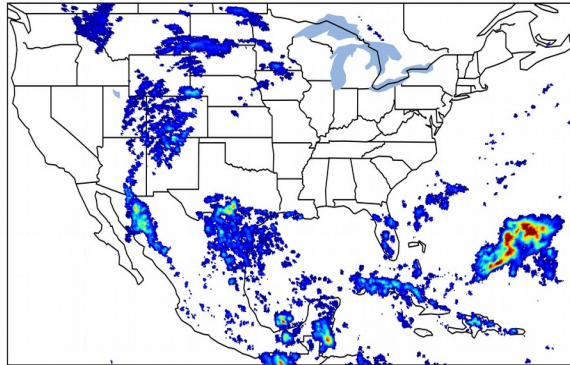
Geostationary Lightning Mapper Gridded Products Daily Summary



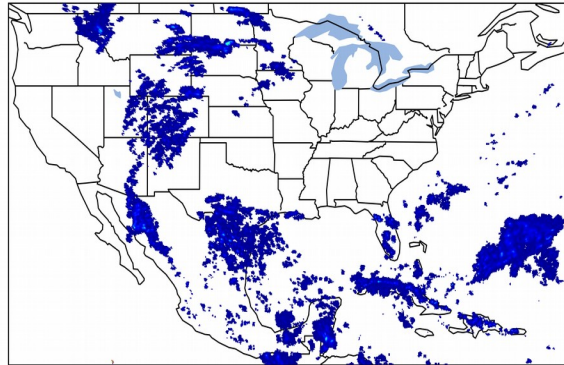
Overall Summary Statistics for 1200Z-1200Z ending on 06/01/2020

13.3% of grid cells detected lightning - **100.0%** of the day had GLM coverage - Duration of GLM outage(s): **0 minute(s)**

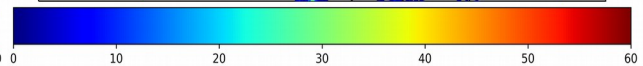
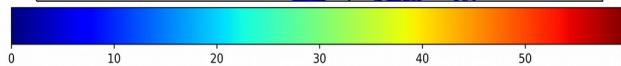
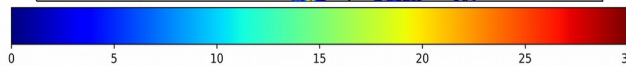
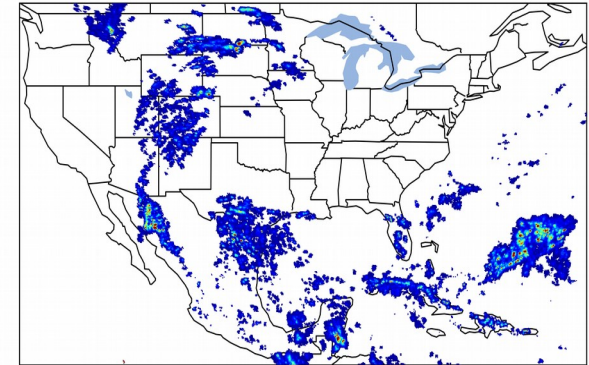
Fraction of the Day With Lightning (%)



Mean 5-min FED



Max 5-min FED



FED Summary Statistics

1-min FED

Max 1-min FED: **52 flashes/min**

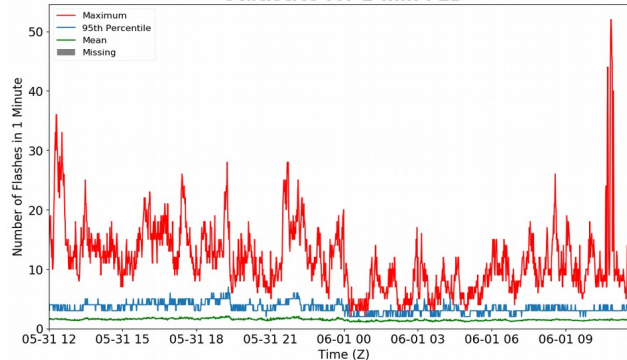
Max min-to-min increase: **38 flashes**

5-min/1-min Updating FED

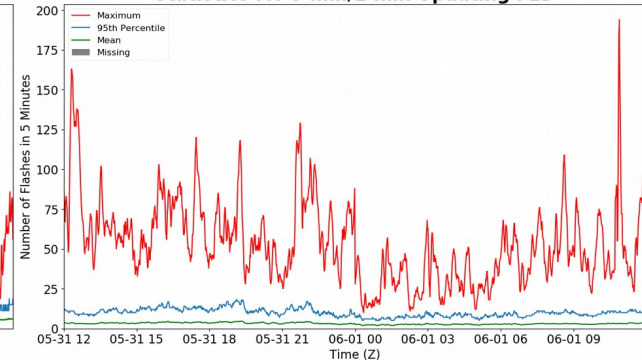
Max 5-min FED: **194 flashes/5min**

Max min-to-min increase: **50 flashes**

Statistics for 1-min FED



Statistics for 5-min/1-min Updating FED



Total Optical Energy and Average Flash Area Summary Statistics

5-min/1-min Updating TOE

Max 5-min TOE: **181.4 fj**

Max min-to-min increase: **63.7 fj**

5-min/1-min Updating AFA

Max 5-min AFA: **9676.0 km²**

Max min-to-min increase: **7238.0 km²**