



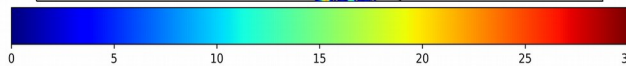
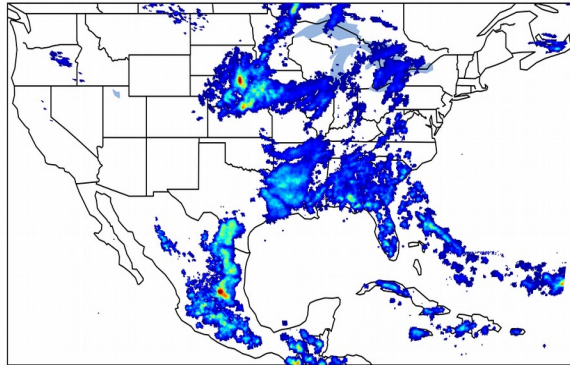
# Geostationary Lightning Mapper Gridded Products Daily Summary



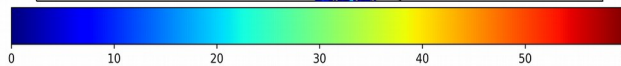
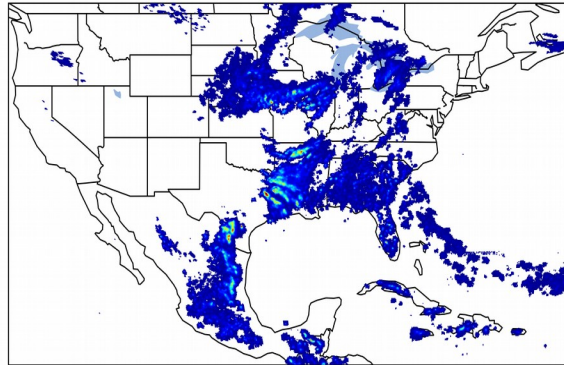
## Overall Summary Statistics for 1200Z-1200Z ending on 06/10/2020

**15.9%** of grid cells detected lightning - **100.0%** of the day had GLM coverage - Duration of GLM outage(s): **0 minute(s)**

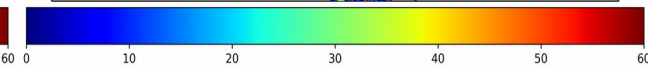
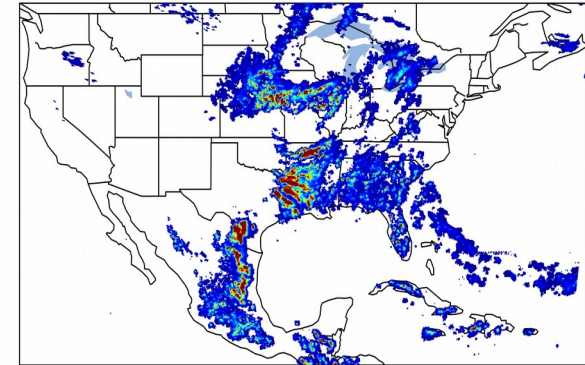
### Fraction of the Day With Lightning (%)



### Mean 5-min FED



### Max 5-min FED



## FED Summary Statistics

### 1-min FED

Max 1-min FED: **54 flashes/min**

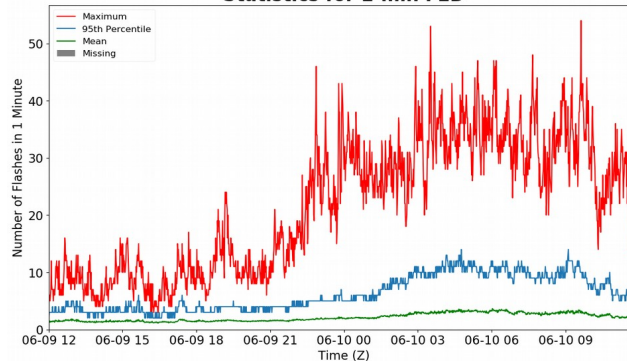
Max min-to-min increase: **20 flashes**

### 5-min/1-min Updating FED

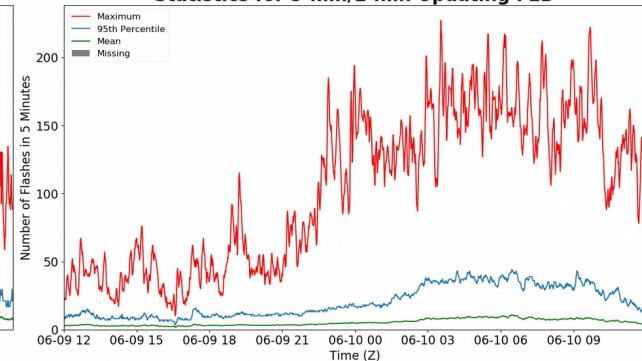
Max 5-min FED: **227 flashes/5min**

Max min-to-min increase: **42 flashes**

### Statistics for 1-min FED



### Statistics for 5-min/1-min Updating FED



## Total Optical Energy and Average Flash Area Summary Statistics

### 5-min/1-min Updating TOE

Max 5-min TOE: **196.3 fj**

Max min-to-min increase: **187.0 fj**

### 5-min/1-min Updating AFA

Max 5-min AFA: **9370.0 km<sup>2</sup>**

Max min-to-min increase: **7048.0 km<sup>2</sup>**