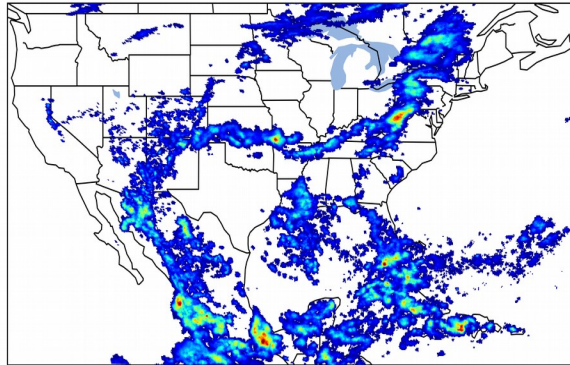


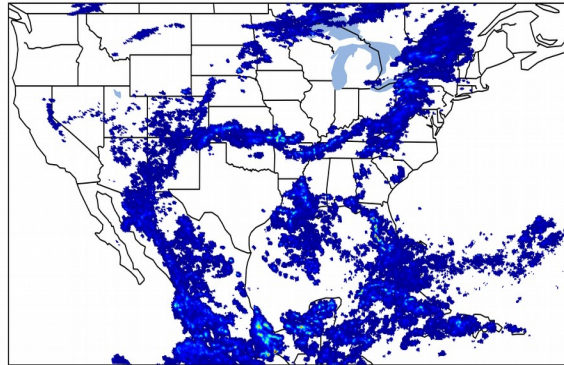
## Overall Summary Statistics for 1200Z-1200Z ending on 07/17/2020

**26.7%** of grid cells detected lightning - **100.0%** of the day had GLM coverage - Duration of GLM outage(s): **0 minute(s)**

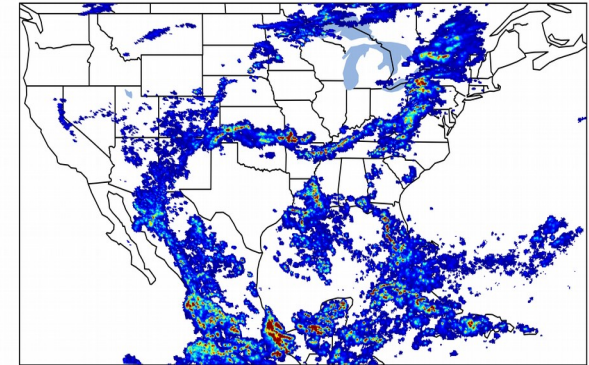
**Fraction of the Day With Lightning (%)**



**Mean 5-min FED**



**Max 5-min FED**



### FED Summary Statistics

#### **1-min FED**

Max 1-min FED: **47 flashes/min**

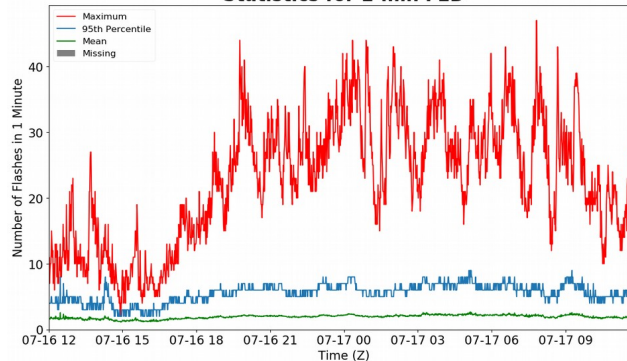
Max min-to-min increase: **18 flashes**

#### **5-min/1-min Updating FED**

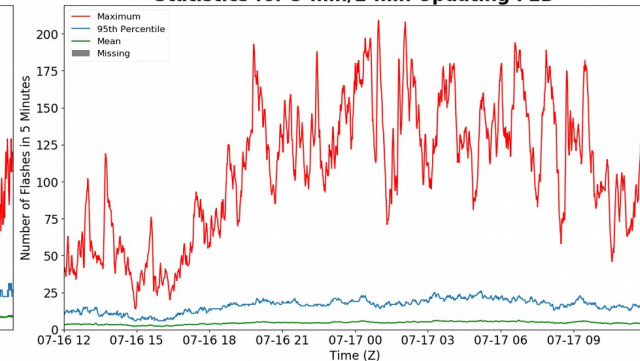
Max 5-min FED: **209 flashes/5min**

Max min-to-min increase: **43 flashes**

**Statistics for 1-min FED**



**Statistics for 5-min/1-min Updating FED**



### Total Optical Energy and Average Flash Area Summary Statistics

#### **5-min/1-min Updating TOE**

Max 5-min TOE: **196.0 fj**

Max min-to-min increase: **192.3 fj**

#### **5-min/1-min Updating AFA**

Max 5-min AFA: **9992.0 km<sup>2</sup>**

Max min-to-min increase: **7782.0 km<sup>2</sup>**